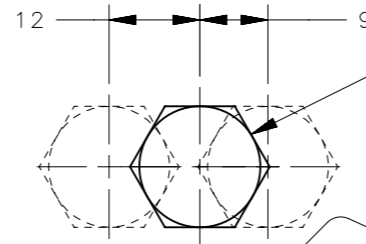
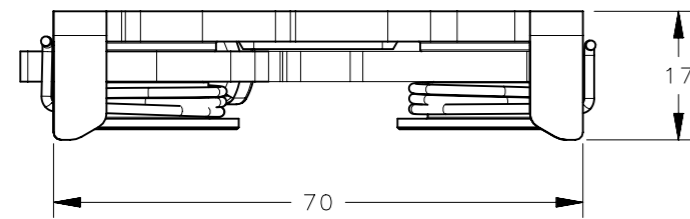
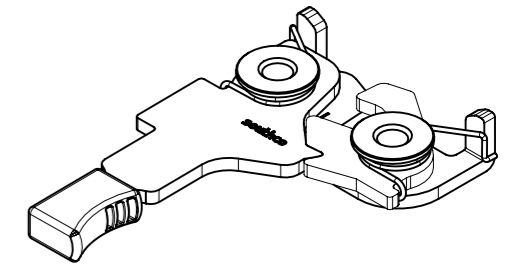


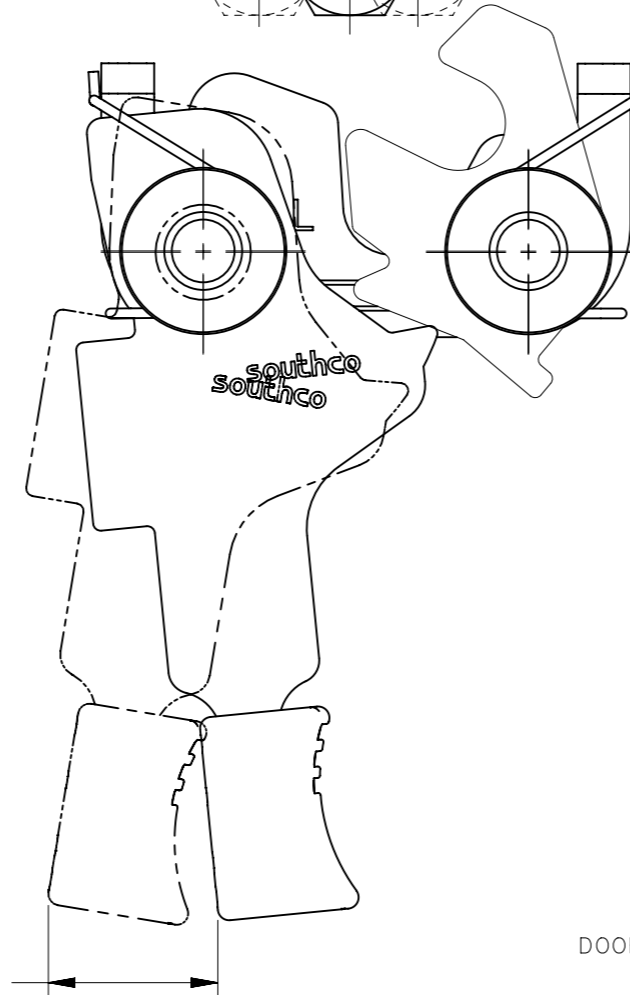
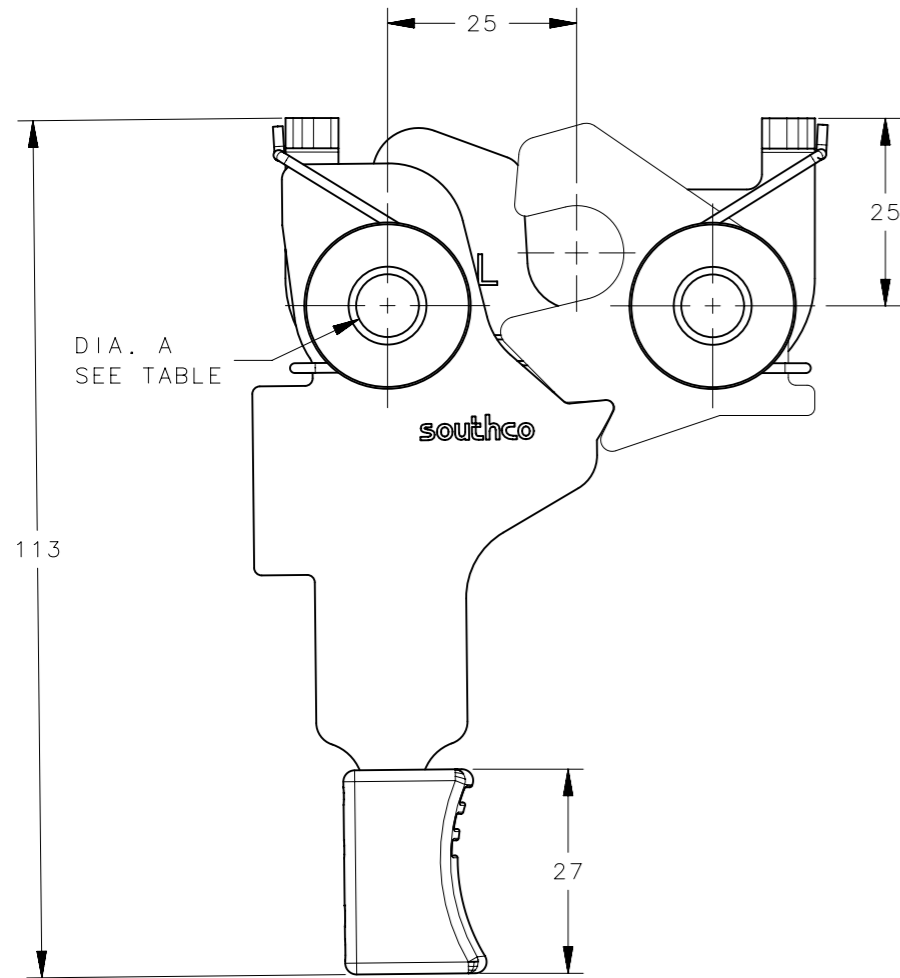
REVISION HISTORY			
REV	DATE	BY	DESCRIPTION
B	15JUN2016	VK/YGC	PRN: P2016-1381



STRIKER BOLT
PART NUMBER R4-91-2X1-10
(SOLD SEPARATELY
SEE DRAWING J-R4-91-200 FOR DETAILS)

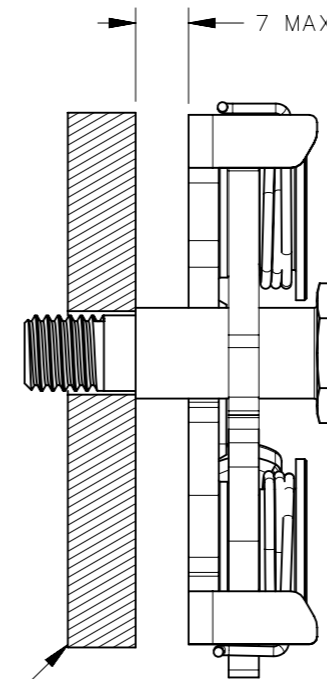


SCALE 1:2

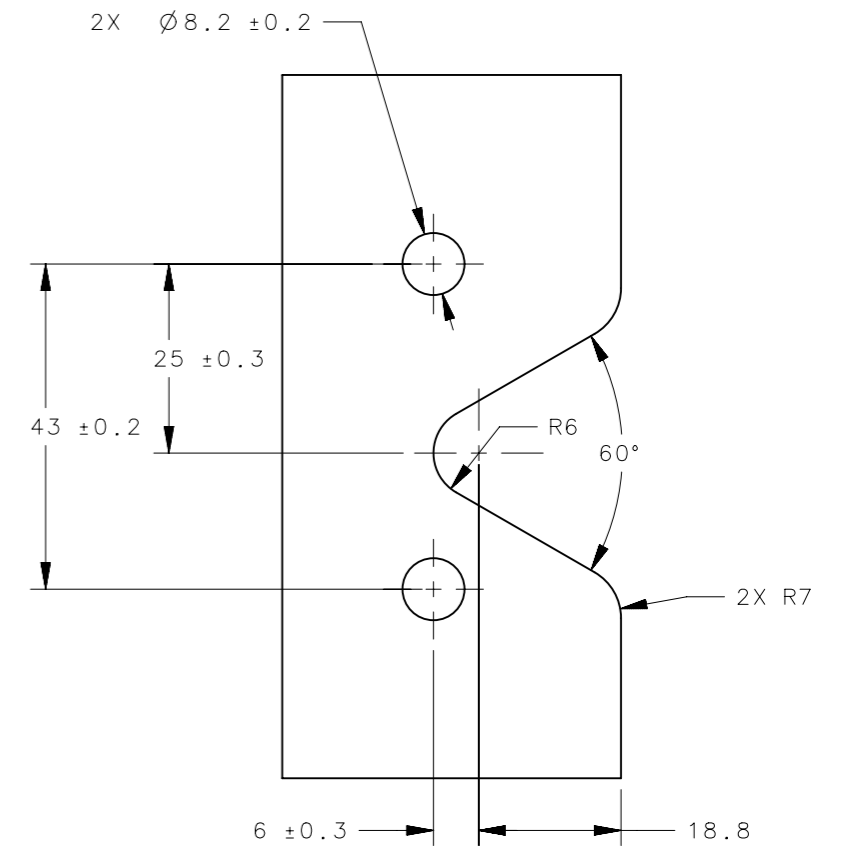


22 AMOUNT OF
TRIGGER TRAVEL

MISALIGNMENT VIEW
(SEE NOTE 2)



DOOR



PANEL PREPARATION

NOTES:

- MATERIAL AND FINISH:
 - A. HOUSING AND PIN: STEEL, ZINC PLATED, BRIGHT CHROMATE
 - B. PAWL AND TRIGGER: HARDENED STEEL, ZINC PLATED BRIGHT CHROMATE.
 - C. SPRING: STAINLESS STEEL, PASSIVATED
- THE TOLERANCE BETWEEN THE LATCH AND STRIKER BOLT ASSUMES A NON-RIGID DOOR INSTALLATION THAT WILL ALLOW THE DOOR TO MOVE INTO THE NOMINAL POSITION DURING LATCHING. RIGID DOORS MUST HAVE THE STRIKER INSTALLED PER THE PANEL PREPERATION RECOMMENDATION.

R4-20-22-401-10	M8 ASSEMBLY	M8 X 1.25	SEE NOTE 1	SEE NOTE 1
R4-20-21-401-10	5/16-18 ASSEMBLY	5/16-18 THREAD	SEE NOTE 1	SEE NOTE 1
R4-20-20-401-10	8.3mm THRU ASSEMBLY	Ø 8.3 ± .12	SEE NOTE 1	SEE NOTE 1
PART NUMBER	ITEM	DIMENSION A	MATERIAL	FINISH

THIRD ANGLE PROJECTION		 CONNECT · CREATE · INNOVATE		
MILLIMETERS [IN]				
TOLERANCES UNLESS OTHERWISE NOTED		DESCRIPTION R4-20 LEFT HAND ASSEMBLY SINGLE STAGE WITH HANDLE		
ALL DIMENSIONS WITHOUT TOLERANCES ARE FOR REFERENCE ONLY.		SIZE A3	SYSTEM NX	DWG NO. J-R4-20-20-401
PROPRIETARY ITEM EXCEPT FOR USES EXPRESSLY GRANTED IN WRITING, INFORMATION DISCLOSED HEREON IS CONFIDENTIAL AND ALL RIGHTS, PATENT AND OTHERWISE, ARE RESERVED BY SOUTHCO, INC.		PER ASME Y14.5M-1994	DRAWN BY VK	DATE 12FEB2016
		SCALE 1:1	SHEET 1 OF 1	