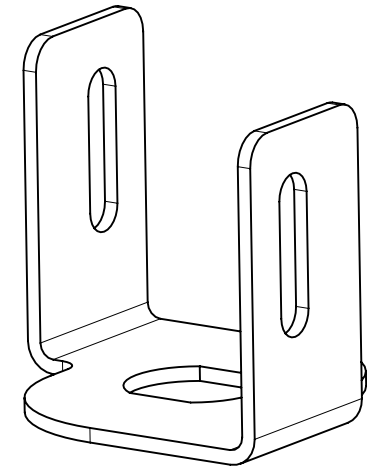
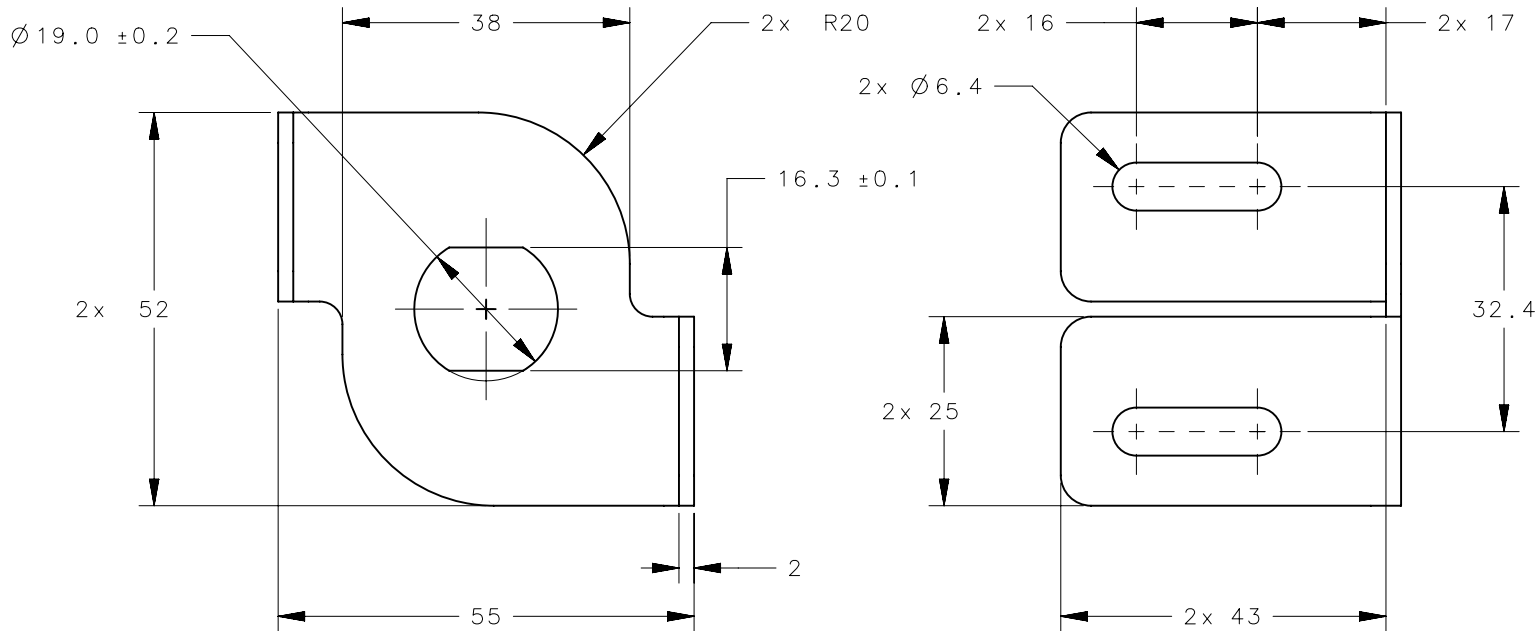


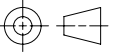
NOTES:

1. RoHS COMPLIANT.
2. COSMETIC SPECIFICATION:
 ALL SURFACES UNLESS OTHERWISE NOTED ARE TO CONFORM TO A CLASS "C"
 DESIGNATION AS DESCRIBED IN SOUTHCO COSMETIC SPECIFICATION:
 S-121-02 FOR ZINC PLATED PARTS

REVISION HISTORY			
REV	DATE	BY	DESCRIPTION
A	18MAY2010	MJS/CLB	PRN: P2010-0487



AC-0-49618-11-L	BRACKET	STEEL	ZINC PLATE, TRIVALENT CHROMATE
SOUTHCO PART NUMBER	TYPE OF COMPONENT	MATERIAL	FINISH

	THIRD ANGLE PROJECTION	 southco [®] CONNECT • CREATE • INNOVATE		
	MILLIMETERS [IN]			
SURFACE AREA 8579.4 mm ²	TOLERANCES UNLESS OTHERWISE NOTED ALL DIMENSIONS WITHOUT TOLERANCES ARE FOR REFERENCE ONLY	DESCRIPTION BRACKET, LEFT HAND, MECHANICAL OVERRIDE CABLE, PT		
VOLUME 7545.7 mm ³		SIZE A4	SYSTEM NX	DWG NO. J-AC-0-49618-11-L
PROPRIETARY ITEM EXCEPT FOR USES EXPRESSLY GRANTED IN WRITING, INFORMATION DISCLOSED HEREON IS CONFIDENTIAL AND ALL RIGHTS, PATENT AND OTHERWISE, ARE RESERVED BY SOUTHCO, INC.	PER ASME Y14.5M-1994	DRAWN BY IR/	DATE 11 JAN 10	SCALE 1:1
			SHEET 1 OF 1	