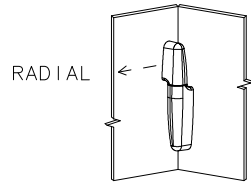


REV	DATE	DRAWN/CHKD	DESCRIPTION
A	09APR2002	GDM	UPDATE FORMAT

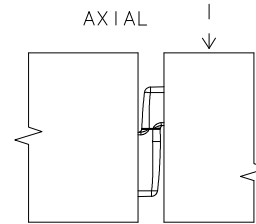


A4
PAPER
SIZE

SOUTHCO PERFORMANCE GUIDELINES
 THE PERFORMANCE GUIDELINES SHOWN ON THIS PAGE ARE SUPPLIED AS A GENERAL GUIDE ONLY, AS CONDITIONS VARY WITH EACH APPLICATION AND METHOD OF INSTALLATION. STRENGTH DATA GIVEN IS FOR FAILURE OF THE PRODUCT OR FOR SUFFICIENT DEFORMATION TO MAKE PRODUCT INOPERABLE. NO SAFETY FACTOR HAS BEEN APPLIED IT IS RECOMMENDED THAT THE USER REQUEST A PRODUCT SAMPLE FOR TESTING TO DETERMINE THE SUITABILITY OF THE PRODUCT FOR THE PURPOSE INTENDED AND USER'S PARTICULAR APPLICATION.



	MAXIMUM RECOMMENDED WORKING LOAD NEWTONS (lbf)	AVERAGE ULTIMATE LOAD NEWTONS (lbf)
23°C DRY	700 (157)	1,000 (224)
23°C *	400 (89)	700 (157)
-20°C DRY	650 (146)	900 (202)
-20°C *	370 (83)	700 (157)
60°C DRY	400 (89)	660 (148)
60°C *	330 (74)	580 (130)



	MAXIMUM RECOMMENDED WORKING LOAD NEWTONS (lbf)	AVERAGE ULTIMATE LOAD NEWTONS (lbf)
	1,200 (269)	3,500 (786)
	650 (146)	2,850 (640)
	450 (101)	3,400 (764)
	530 (119)	3,200 (719)
	700 (157)	2,950 (663)
	410 (92)	2,770 (662)

PART NUMBERS:
 96-710 (PIN)
 96-720 (RECEIVER)
 96-79-X (SCREW)

CYCLE LIFE
 AT 200 N (45 lbf)

CYCLE TEST STOPPED
 WHEN 5,000 CYCLES
 WERE REACHED. NO
 FAILURES REPORTED
 UP TO 5,000 CYCLES.

*SAMPLE PARTS TREATED TO ACHIEVE 2 % MOISTURE BY WEIGHT.

AVERAGE ULTIMATE LOAD- THE LOAD THAT CAUSES FAILURE OR EXCESSIVE DEFORMATION WHICH RENDERS THE PRODUCT INOPERABLE.

MAXIMUM WORKING LOAD- THE MAXIMUM RECOMMENDED LOAD AT WHICH THE PRODUCT CONTINUES TO FUNCTION PROPERLY.

RECOMMENDED MOUNTING SCREW INSTALLATION TORQUE:
 1.6 N m (14 lbf in)

MAXIMUM INSTALLATION TORQUE: 2.8 N m (25 lbf in)

ULTRA VIOLET LIGHT EXPOSURE: 500 HOURS

NOTE: ALL TESTING OTHER THAN 23°C WAS DONE WITH LIMITED SAMPLE SIZE CONTACT SOUTHCO FOR DETAILS.