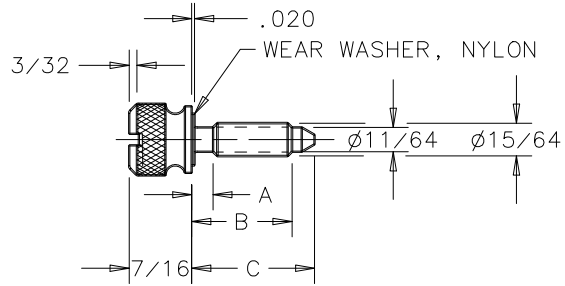
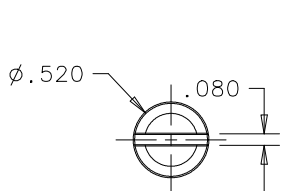


DRAWING NUMBER
J-12-51
INCHES



NOTES:
FOR SCREWS WITHOUT WEAR WASHER CHANGE
FIRST DIGIT OF SECOND UNIT OF PART No.
TO "2" EXAMPLE: 12-236 A

REV	DATE	DRAWN/CHKD	DESCRIPTION
O	04MAR98	PJK/CHW	PRN: 12-236 A
P	04OCT2010	ACH	PRN: P2010-1041
Q	09SEP2017	CMS/JCG	PRN: P2017-2106

DATE
3-5-60

No. 12 FASTENER-SCREW ASSEMBLIES
KNURLED HEAD

PROPRIETARY ITEM - EXCEPT FOR USES EXPRESSLY
GRANTED IN WRITING INFORMATION DISCLOSED
HEREON IS CONFIDENTIAL AND ALL RIGHTS PATENT
AND OTHERWISE ARE RESERVED BY SOUTHCO, INC.

southco

SCREW ASSEMBLY PART NUMBER			A	B	C
STEEL - HARDENED ZINC PLATE CHROMATE PLUS SEALER	STAINLESS STEEL PASSIVATED	STEEL - HARDENED CHROMIUM PLATE			
12-13-102-11	12-13-102-12	12-13-102-14	.100	.328	.486
12-13-103-11	12-13-103-12	12-13-103-14	.150	.328	.486
12-13-202-11	12-13-202-12	12-13-202-14	.100	.453	.611
12-13-203-11	12-13-203-12	12-13-203-14	.150	.453	.611
12-13-204-11	12-13-204-12	12-13-204-14	.200	.453	.611
12-13-205-11	12-13-205-12	12-13-205-14	.250	.453	.611
12-13-302-11	12-13-302-12	12-13-302-14	.100	.578	.736
12-13-303-11	12-13-303-12	12-13-303-14	.150	.578	.736
12-13-304-11	12-13-304-12	12-13-304-14	.200	.578	.736
12-13-305-11	12-13-305-12	12-13-305-14	.250	.578	.736
12-13-307-11	12-13-307-12	12-13-307-14	.350	.578	.736
12-13-402-11	12-13-402-12	12-13-402-14	.100	.703	.861
12-13-403-11	12-13-403-12	12-13-403-14	.150	.703	.861
12-13-404-11	12-13-404-12	12-13-404-14	.200	.703	.861
12-13-405-11	12-13-405-12	12-13-405-14	.250	.703	.861
12-13-407-11	12-13-407-12	12-13-407-14	.350	.703	.861
12-13-409-11	12-13-409-12	12-13-409-14	.450	.703	.861
12-13-502-11	12-13-502-12	12-13-502-14	.100	.828	.986
12-13-503-11	12-13-503-12	12-13-503-14	.150	.828	.986
12-13-504-11	12-13-504-12	12-13-504-14	.200	.828	.986
12-13-505-11	12-13-505-12	12-13-505-14	.250	.828	.986
12-13-507-11	12-13-507-12	12-13-507-14	.350	.828	.986
12-13-509-11	12-13-509-12	12-13-509-14	.450	.828	.986
12-13-511-11	12-13-511-12	12-13-511-14	.550	.828	.986
12-13-602-11	12-13-602-12	12-13-602-14	.100	.953	1.111
12-13-603-11	12-13-603-12	12-13-603-14	.150	.953	1.111
12-13-604-11	12-13-604-12	12-13-604-14	.200	.953	1.111
12-13-605-11	12-13-605-12	12-13-605-14	.250	.953	1.111
12-13-607-11	12-13-607-12	12-13-607-14	.350	.953	1.111
12-13-609-11	12-13-609-12	12-13-609-14	.450	.953	1.111
12-13-611-11	12-13-611-12	12-13-611-14	.550	.953	1.111
12-13-613-11	12-13-613-12	12-13-613-14	.650	.953	1.111
12-13-615-11	12-13-615-12	12-13-615-14	.750	.953	1.111
12-13-702-11	12-13-702-12	12-13-702-14	.100	1.078	1.236
12-13-703-11	12-13-703-12	12-13-703-14	.150	1.078	1.236
12-13-704-11	12-13-704-12	12-13-704-14	.200	1.078	1.236
12-13-705-11	12-13-705-12	12-13-705-14	.250	1.078	1.236
12-13-707-11	12-13-707-12	12-13-707-14	.350	1.078	1.236
12-13-709-11	12-13-709-12	12-13-709-14	.450	1.078	1.236
12-13-711-11	12-13-711-12	12-13-711-14	.550	1.078	1.236
12-13-713-11	12-13-713-12	12-13-713-14	.650	1.078	1.236
12-13-715-11	12-13-715-12	12-13-715-14	.750	1.078	1.236
12-13-717-11	12-13-717-12	12-13-717-14	.850	1.078	1.236
12-13-802-11	12-13-802-12	12-13-802-14	.100	1.203	1.361
12-13-803-11	12-13-803-12	12-13-803-14	.150	1.203	1.361
12-13-804-11	12-13-804-12	12-13-804-14	.200	1.203	1.361
12-13-805-11	12-13-805-12	12-13-805-14	.250	1.203	1.361
12-13-807-11	12-13-807-12	12-13-807-14	.350	1.203	1.361
12-13-809-11	12-13-809-12	12-13-809-14	.450	1.203	1.361
12-13-811-11	12-13-811-12	12-13-811-14	.550	1.203	1.361
12-13-813-11	12-13-813-12	12-13-813-14	.650	1.203	1.361
12-13-815-11	12-13-815-12	12-13-815-14	.750	1.203	1.361
12-13-817-11	12-13-817-12	12-13-817-14	.850	1.203	1.361
12-13-819-11	12-13-819-12	12-13-819-14	.950	1.203	1.361