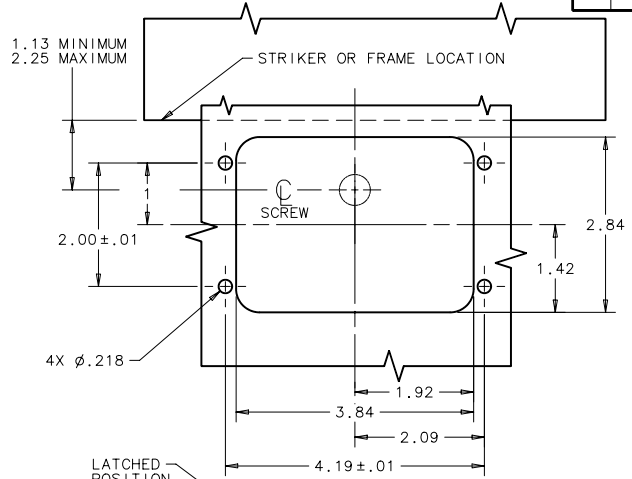


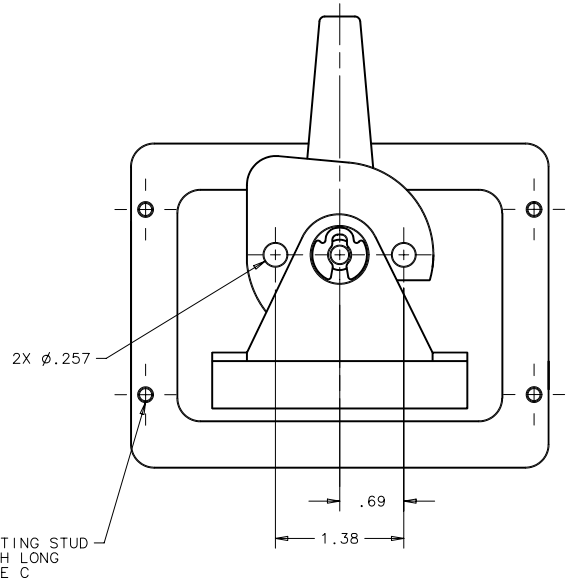
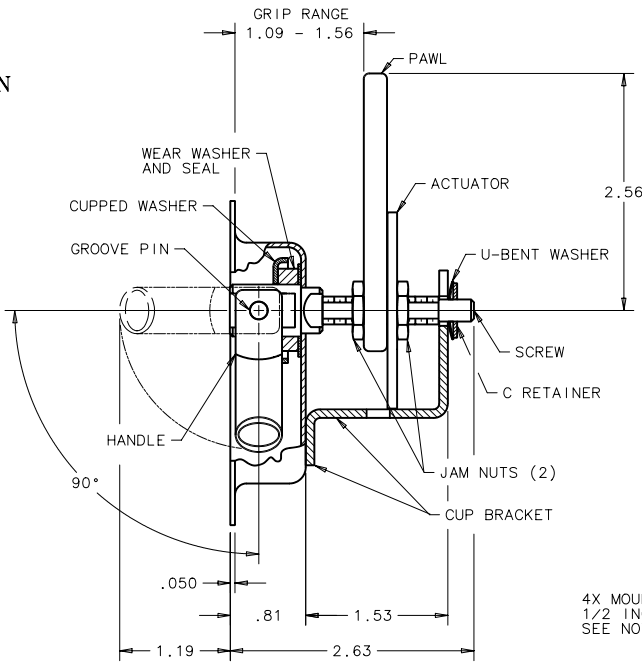
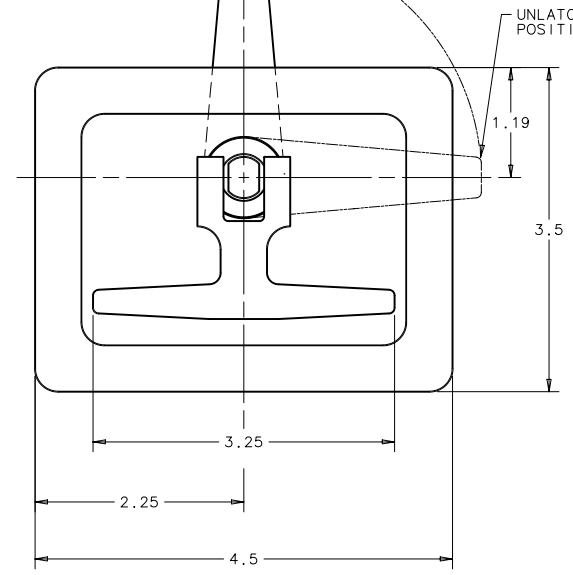
NOTES:
 A. TIGHTENING TORQUE OF MOUNTING NUTS
 NOT TO EXCEED 25 in.-lbs.
 B. MOUNTING HEX NUT AND LOCKWASHER 4 EACH INCLUDED
 UNASSEMBLED

REV	DATE	DRAWN/CHKD	DESCRIPTION	ITEM	PART NUMBER	MATERIAL	FINISH
G	3-23-88	JSS	PRN: 64-105	ASSEMBLY	24-20-402-10	-	-
H	4-13-88	JSS	PRN: 24-108	GROOVE PIN	-	STEEL	ZINC PLATE PLUS BRIGHT CHROMATE
I	3-22-93	JGK	PRN: 24-137	SCREW	-	STEEL	ZINC FLAKE COATING
J	5MAR93	VTB	PRN: 5-1-03	CONICAL SPRING	-	STAINLESS STEEL	PASSIVATE
K	21MAY97	SWD	PRN: 24-176	PAWL	-	STEEL	ZINC FLAKE COATING
L	17MAY2004	RLR/AJH	PRN: P2004-0492	JAM NUT(2)	-	STEEL	ZINC PLATE CHROMATE PLUS SEALER
M	12APR2005	BRP/AJH	PRN: P2005-0592	ACTUATOR	-	STEEL	ZINC FLAKE COATING
				U BENT WASHER	-	STEEL	ZINC PLATE PLUS YELLOW CHROMATE DIP
				C RETAINER	-	STEEL	ZINC PLATE PLUS YELLOW CHROMATE DIP
				HANDLE	-	DIE CAST ZINC	ZINC FLAKE COATING
				CUP WASHER	-	STEEL	ZINC FLAKE COATING
				CUP BRACKET	-	STEEL	ZINC FLAKE COATING
				HEX NUT(4)	-	STEEL	ZINC FLAKE COATING
				LOCKWASHER(4)	-	STEEL	ZINC PLATE PLUS YELLOW CHROMATE DIP

INCHES
 ALL DIMENSIONS WITHOUT TOLERANCES ARE FOR REFERENCE ONLY.



PANEL PREPARATION



THESE ASSEMBLIES ARE NON-REPAIRABLE.
 ITEMS AND COMPONENTS ARE NOT AVAILABLE
 AS REPLACEMENT OR REPAIR PARTS.