

NOTES:

- A. OPERATION: 195° TURN OF KEY CAUSES PAWL TO ROTATE 75° THEN PULL UP 0.25.
- B. PAWL, NUTS, AND LOCKWASHERS SHIPPED UNASSEMBLED IN BAG WITH LATCH ASSEMBLY.
- C. INSTALLATION:
 1. INSERT LATCH INTO HOLE IN DOOR. CHECK FOR PROPER ORIENTATION AND OPERATION OF PAWL.
 2. INSTALL USING LOCKWASHER AND MOUNTING NUT (27mm ACROSS FLATS). MAX. TIGHTENING TORQUE 250 in-lb.
 3. INSTALL JAM NUT, LOCKWASHER, PAWL, LOCKWASHER, AND JAM NUT ON SHAFT. ADJUST JAM NUTS TO POSITION PAWL AT CORRECT GRIP (WITH LATCH CLOSED). TIGHTEN JAM NUTS (180 in-lb MAX. TORQUE) USING TWO 17mm WRENCHES.
- 4. CAUTION: ADJUST PAWL SO THAT NO MORE THAN 70 in-lb TORQUE ON KEY IS REQUIRED TO CLOSE LATCH.

X FINISH TABLE

- 1 - BRIGHT CHROME PLATE
- 4 - CARDINAL WHITE POWDER COAT
- 5 - BLACK POWDER COAT
- 7 - SATIN SILVER POLYESTER POWDER COAT

southco

PROPRIETARY ITEM - EXCEPT FOR USES EXPRESSLY GRANTED IN WRITING INFORMATION DISCLOSED HEREON IS CONFIDENTIAL AND ALL RIGHTS, PATENT AND OTHERWISE ARE RESERVED BY SOUTHCO, INC.

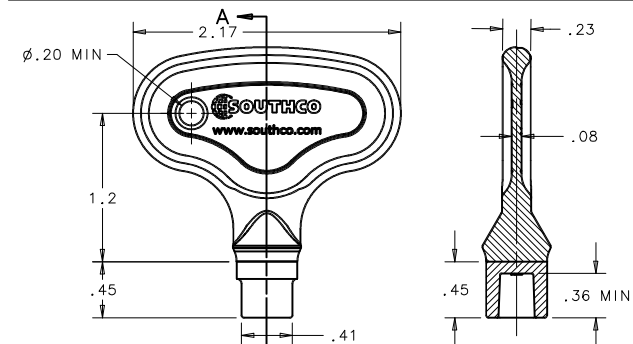
**WISE-ACTION LATCH
7MM SQUARE DRIVE**

| | | | | |
|---------|-------|------|-------|----------------|
| DATE | DRAWN | CHKD | SCALE | DRAWING NUMBER |
| 5/26/89 | RES | | 1:1 | J-E3-14 |

| REV | DATE | DRAWN/CHKD | DESCRIPTION | ITEM | PART NUMBER | GRIP RANGE | EXTENDED GRIP RANGE | PAWL OFF-SET |
|-----|-----------|------------|--------------------|----------------|-------------|------------|---------------------|--------------|
| G | 07JUL99 | SCK/JSS | PRN: E3-801/E3-806 | LATCH ASSEMBLY | E3-14-1X | 0.45-1.07 | 2.61-3.00 | 1.08 |
| H | 14FEB2001 | JRS/JSS | PRN: E3-847A | LATCH ASSEMBLY | E3-14-2X | 1.00-1.62 | 2.07-2.69 | 0.54 |
| I | 28FEB2003 | RLR/MJS | PRN: P2003-0112 | LATCH ASSEMBLY | E3-14-3X | 1.53-2.15 | NONE | NONE |
| J | 01MAY2007 | BWR/RLR | PRN: P2007-0587 | | | | | |
| K | 28JAN2015 | CMS/MWD | PRN: P2015-0219 | | | | | |
| L | 30JUN2021 | CMS/DMS | PRN: P2021-1291 | | | | | |

INCHES

ALL DIMENSIONS WITHOUT TOLERANCES ARE FOR REFERENCE ONLY.



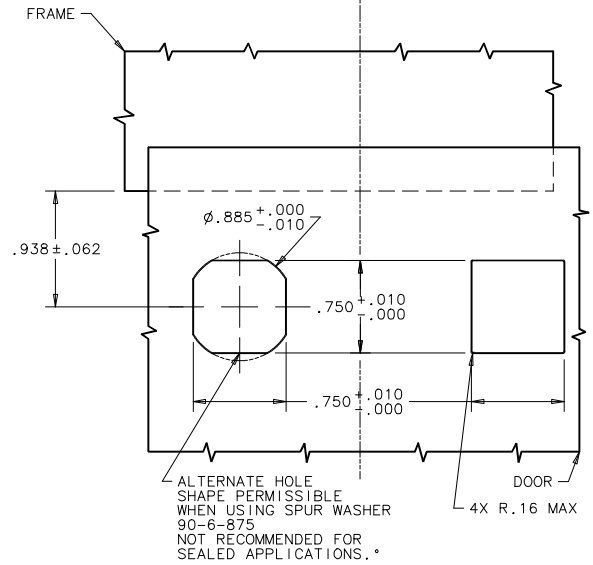
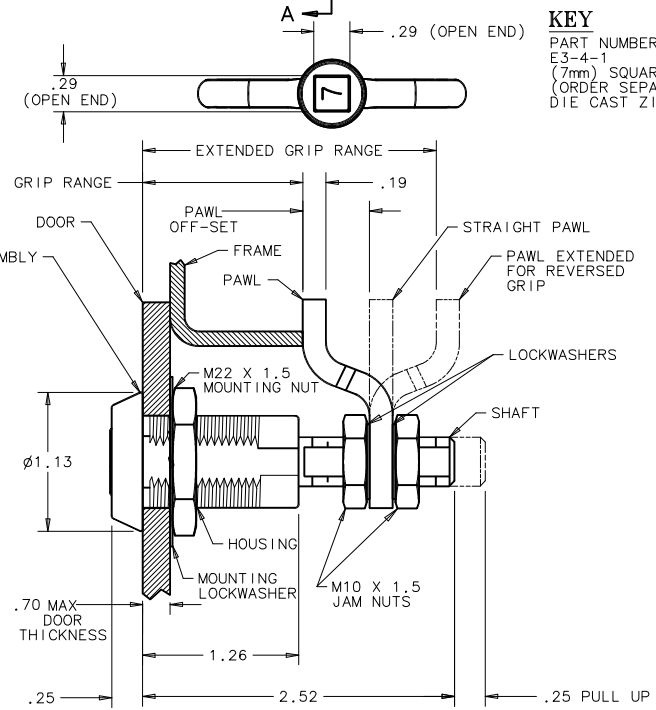
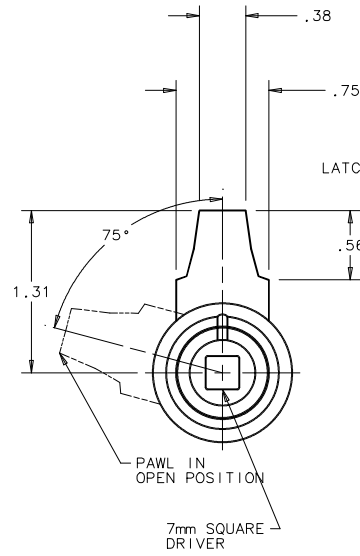
| COMPONENT | MATERIAL | FINISH |
|---------------------|---------------------|--------------------------------------|
| HOUSING | DIE CAST ZINC | SEE FINISH TABLE |
| CAP | DIE CAST ZINC | SEE FINISH TABLE |
| RETAINER | 302 STAINLESS STEEL | NATURAL |
| SPRING | 302 STAINLESS STEEL | NATURAL |
| O-RING | BUNA-N | NATURAL |
| SLEEVE | 1075 STEEL | ZINC IMMERSION COATING † |
| CAM | 1075 STEEL | ZINC IMMERSION COATING † |
| SHAFT | LOW CARBON STEEL | ZINC PLATE CHROMATE, PLUS SEALER |
| PIN | 1008 STEEL | ZINC PLATE PLUS CHROMATE DIP, YELLOW |
| PAWL | 1010 STEEL | ZINC PLATE CHROMATE, PLUS SEALER |
| JAM NUTS (2) | LOW CARBON STEEL | ZINC PLATE CHROMATE, PLUS SEALER |
| LOCKWASHERS (2) | SPRING STEEL | ZINC PLATE CHROMATE, PLUS SEALER |
| MOUNTING NUT | DIE CAST ZINC | ZINC PLATE, BRIGHT CHROMATE |
| MOUNTING LOCKWASHER | SPRING STEEL | ZINC PLATE CHROMATE, PLUS SEALER |

THE ABOVE PART NUMBERS ARE TYPE "A" (TURN CLOCKWISE TO LATCH). FOR TYPE "B" ASSEMBLIES (TURN COUNTERCLOCKWISE TO LATCH), CHANGE THE THIRD DIGIT OF THE PART NUMBER FROM 1 TO 22. EXAMPLE: E3-224-15

KEY
PART NUMBER E3-4-1 (7mm) SQUARE TOOL (ORDER SEPARATELY) DIE CAST ZINC, BRIGHT NICKEL PLATE

DOOR PREPARATION

- METHOD A**
- METHOD B**
(NOT RECOMMENDED FOR GASKETED APPLICATIONS)



† TM - METAL COATINGS INTERNATIONAL, INC.