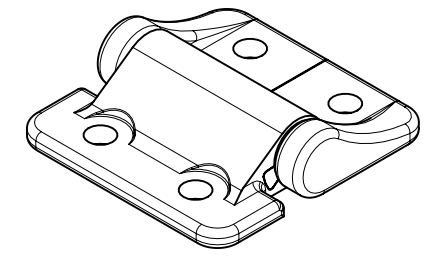
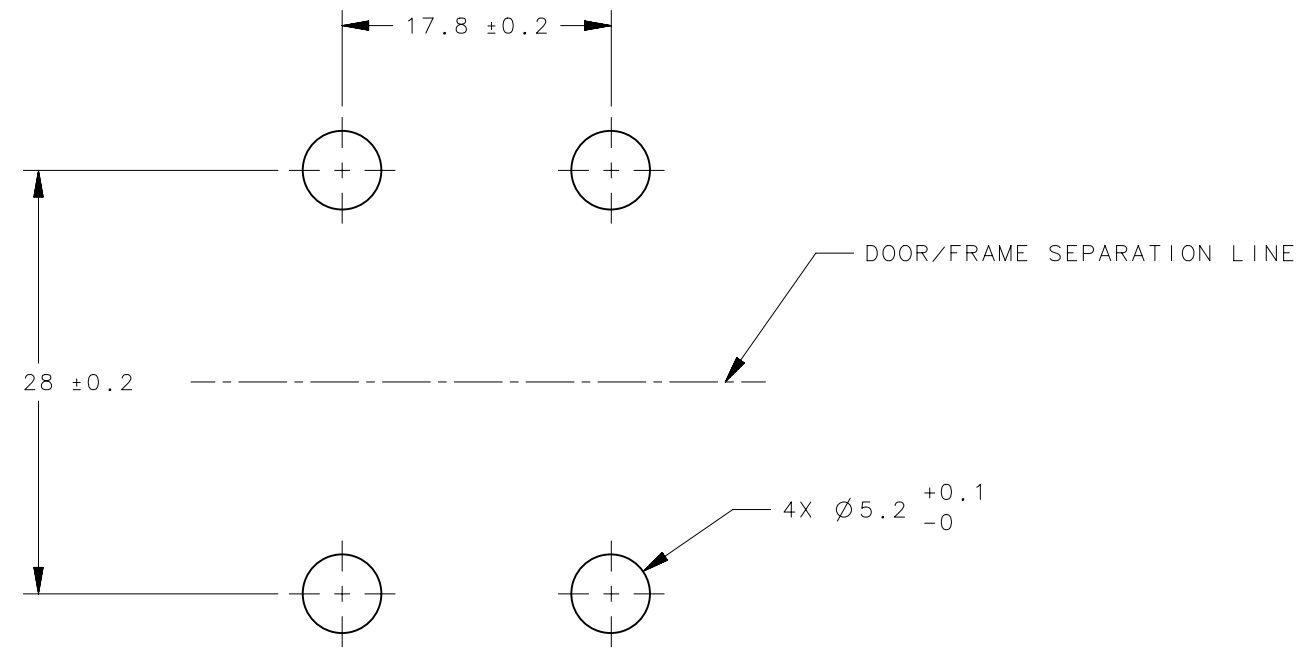


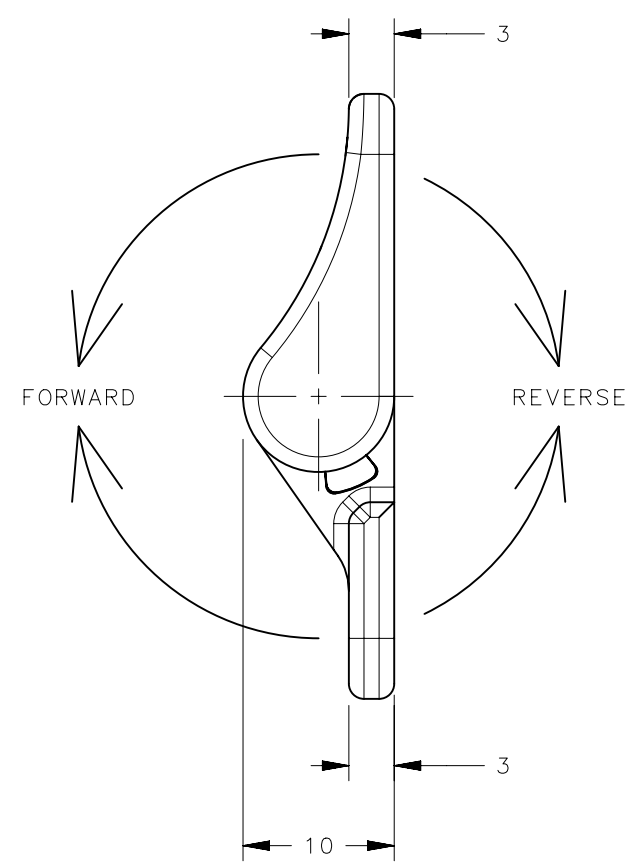
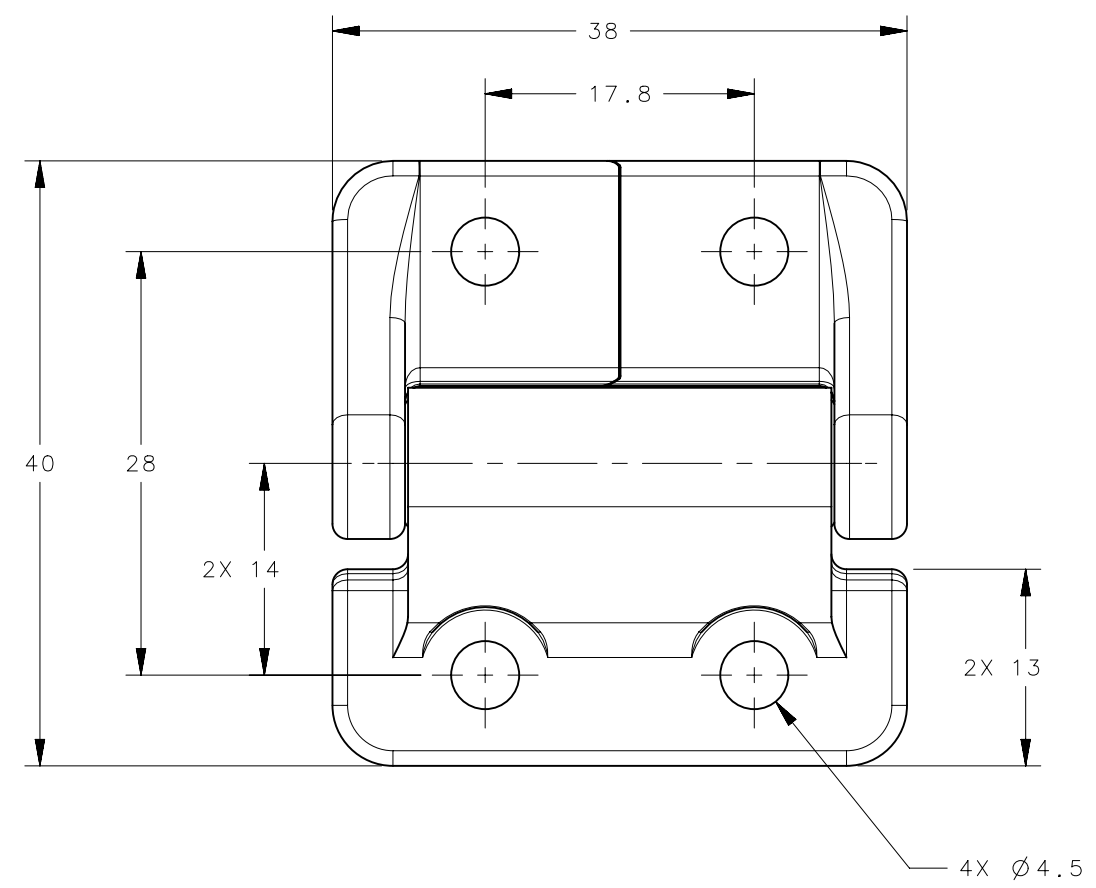
REVISION HISTORY			
REV	DATE	BY	DESCRIPTION
M	08JAN2014	GRD/DGJ	PRN: P2014-0051



SCALE 1:1



PANEL PREPARATION



PART NUMBER	FORWARD TORQUE	REVERSE TORQUE
E6-10-204-XX	0.45 N-m (4.0 in-lbs)	
E6-10-208-XX	0.9 N-m (8.0 in-lbs)	
E6-10-212-XX	1.4 N-m (12.0 in-lbs)	
E6-10-216-XX	1.8 N-m (16.0 in-lbs)	
E6-10-220-XX	2.3 N-m (20.0 in-lbs)	
E6-10-212F-XX	1.4 N-m (12.0 in-lbs)	0.8 N-m (7.2 in-lbs)
E6-10-216F-XX	1.8 N-m (16.0 in-lbs)	1.1 N-m (9.6 in-lbs)
E6-10-220F-XX	2.3 N-m (20.0 in-lbs)	1.4 N-m (12.0 in-lbs)
E6-10-224F-XX	2.8 N-m (24.0 in-lbs)	1.7 N-m (14.4 in-lbs)
E6-10-212R-XX	0.8 N-m (7.2 in-lbs)	1.4 N-m (12.0 in-lbs)
E6-10-216R-XX	1.1 N-m (9.6 in-lbs)	1.8 N-m (16.0 in-lbs)
E6-10-220R-XX	1.4 N-m (12.0 in-lbs)	2.3 N-m (20.0 in-lbs)
E6-10-224R-XX	1.7 N-m (14.4 in-lbs)	2.8 N-m (24.0 in-lbs)

PART NUMBER	DESCRIPTION	FINISH
E6-10-2XXX-63	ASSEMBLY - AS CAST	NATURAL
E6-10-2XXX-50	ASSEMBLY - COATED	BLACK

- NOTES:
- PERFORMANCE TORQUE TOLERANCE $\pm 20\%$
 - DESIGNED TO ACCEPT M4 OR No. 8 SCREW OR EQUIVALENT
 - MATERIAL AND FINISH:
HINGE LEAVES: DIE CAST ALUMINUM, SEE TABLE FOR FINISH
SHAFT & PIN: STEEL
O-RINGS: BUNA-N RUBBER
BEARINGS: DIE CAST ZINC

THIRD ANGLE PROJECTION						
MILLIMETERS [IN]	DESCRIPTION					
TOLERANCES UNLESS OTHERWISE NOTED	E6-200 SERIES HINGE ASSEMBLY					
PROPRIETARY ITEM <small>EXCEPT FOR USES EXPRESSLY GRANTED IN WRITING, INFORMATION DISCLOSED HEREON IS CONFIDENTIAL AND ALL RIGHTS, PATENT AND OTHERWISE, ARE RESERVED BY SOUTHCO, INC.</small>	SIZE	SYSTEM	DWG NO.	J-E6-10-2-50		
	A3	NX		DRAWN BY	DATE	SCALE
PER ASME Y14.5M-1994	ALS	20JUL2006	2:1	1 OF 1		