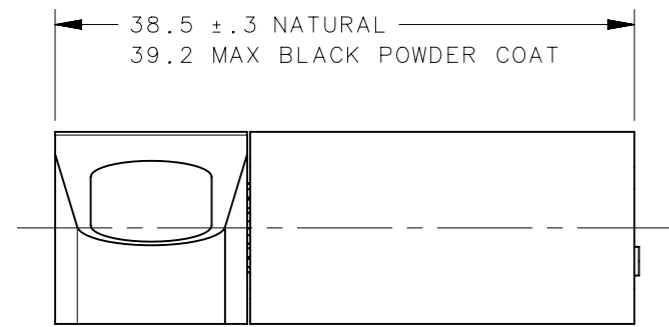
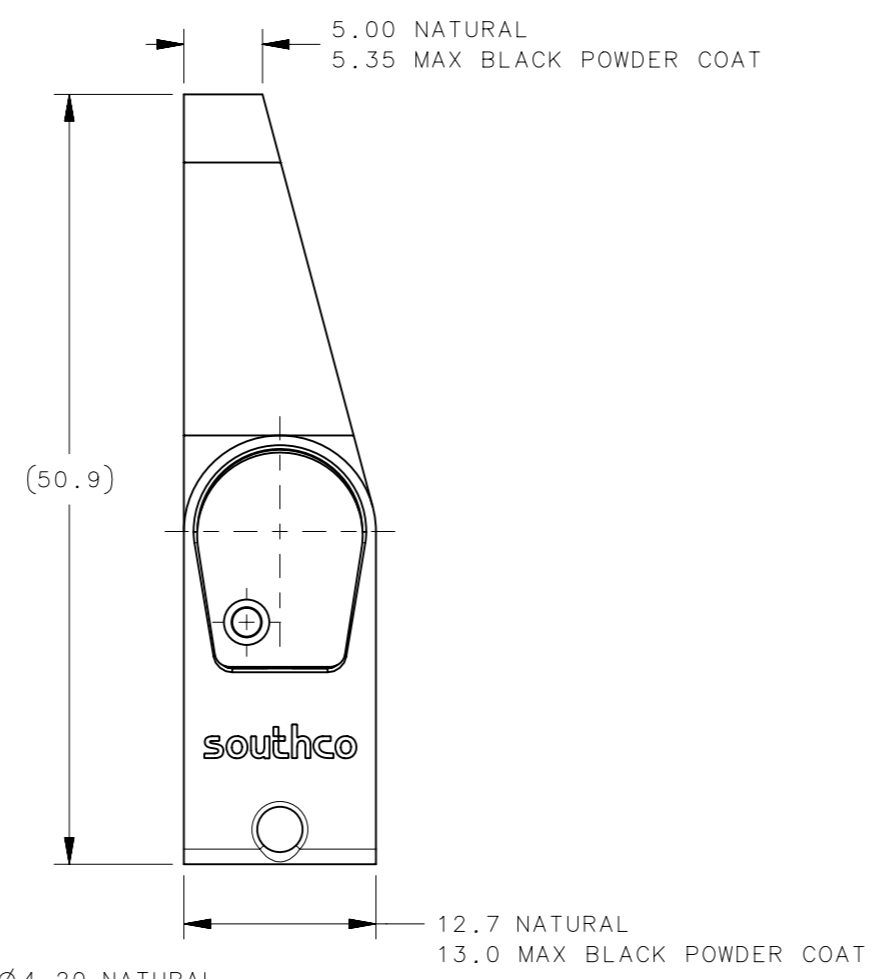
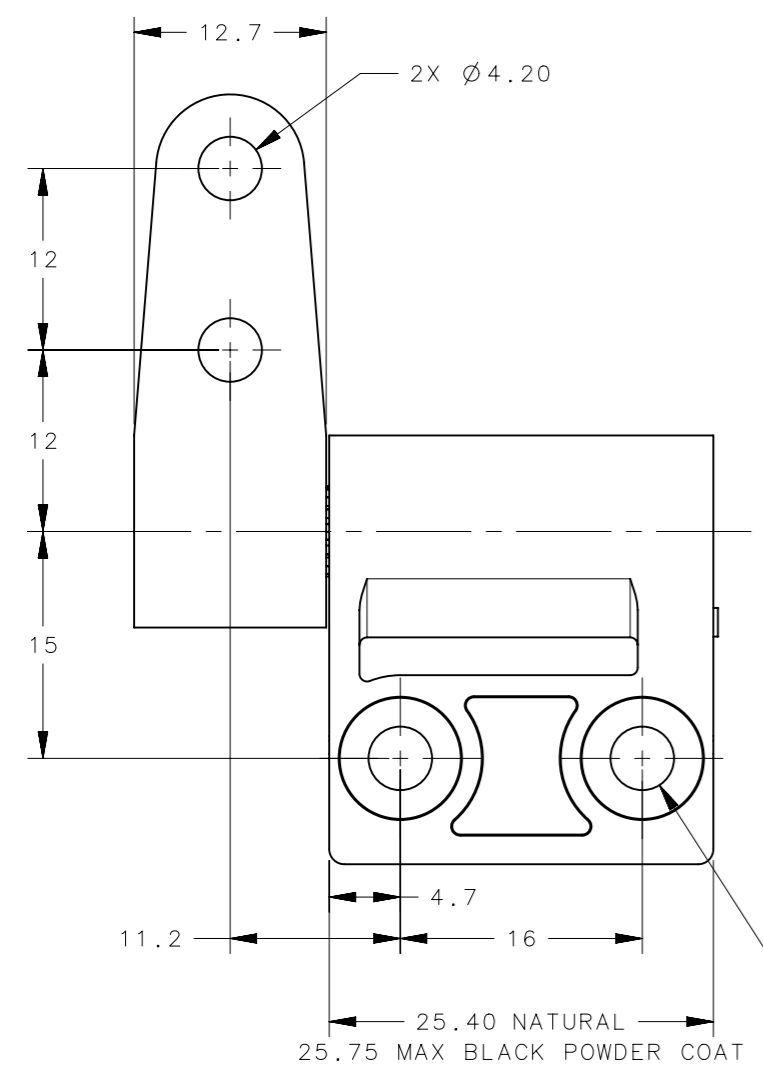


REVISION HISTORY			
REV	DATE	BY	DESCRIPTION
G	27OCT2012	DMS/YGC	PRN: P2012-1473



TYPE B
(SHOWN DIMENSIONED)
SCALE 1:1

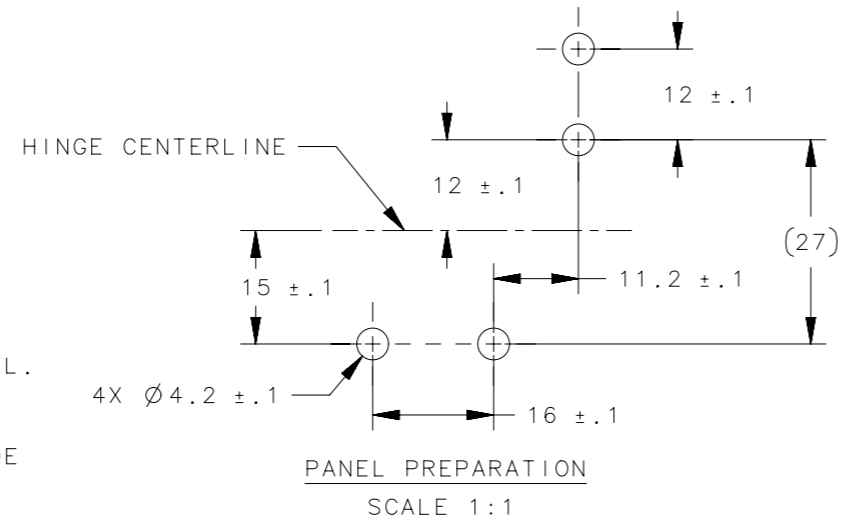
TYPE A
SCALE 1:1



2X Ø4.20 NATURAL
Ø4.05 MIN BLACK POWDER COAT
□Ø8.0 NATURAL
7.6 MIN BLACK POWDER COAT
▽4.2 BOTH SIDES

PART NUMBER		STATIC TORQUE	
TYPE A	TYPE B	FORWARD (in-lbf)	REVERSE (in-lbf)
ST-12A-120SA-XX	ST-12A-120SB-XX	12	12
ST-12A-200SA-XX	ST-12A-200SB-XX	20	20
ST-12A-280SA-XX	ST-12A-280SB-XX	28	28
ST-12A-360SA-XX	ST-12A-360SB-XX	36	36
ST-12A-200FA-XX	ST-12A-200FB-XX	20	13.6
ST-12A-280FA-XX	ST-12A-280FB-XX	28	19.1
ST-12A-360FA-XX	ST-12A-360FB-XX	36	24.6
ST-12A-440FA-XX	ST-12A-440FB-XX	44	30
ST-12A-200RA-XX	ST-12A-200RB-XX	13.6	20
ST-12A-280RA-XX	ST-12A-280RB-XX	19.1	28
ST-12A-360RA-XX	ST-12A-360RB-XX	24.6	36
ST-12A-440RA-XX	ST-12A-440RB-XX	30	44

PART NUMBER	DESCRIPTION	FINISH
ST-12A-XXXXX-33	ASSEMBLY-AS CAST	NATURAL
ST-12A-XXXXX-10	ASSEMBLY-COATED	WHITE POWDER COAT
ST-12A-XXXXX-50	ASSEMBLY-COATED	BLACK POWDER COAT



- NOTES:
- MATERIAL & FINISH:
HOUSING AND ADAPTER - ZINC ALLOY,
FOR FINISH SEE TABLE.
SHAFT AND TORQUE ELEMENTS - HARDENED STEEL.
 - INSTALL HINGE USING A NO.8 OR M4
SOCKET HEAD CAP SCREW.
 - FOR PROPER FUNCTION, ASSEMBLY MUST INCLUDE
(1) TYPE "A" & (1) TYPE "B" HINGE.

THIRD ANGLE PROJECTION	 CONNECT · CREATE · INNOVATE		
SURFACE AREA	TOLERANCES UNLESS OTHERWISE NOTED	DESCRIPTION ST-12A HINGE ASSEMBLY	
VOLUME	ALL DIMENSIONS WITHOUT TOLERANCES ARE FOR REFERENCE ONLY.	SIZE A3	SYSTEM NX
PROPRIETARY ITEM <small>EXCEPT FOR USES EXPRESSLY GRANTED IN WRITING, INFORMATION DISCLOSED HEREON IS CONFIDENTIAL AND ALL RIGHTS, PATENT AND OTHERWISE, ARE RESERVED BY SOUTHCO, INC.</small>	PER ASME Y14.5M-1994	DWG NO. J-ST-12A	SCALE 2:1
		DRAWN BY AS/JM	DATE 10FEB2006
			SHEET 1 OF 1