

REV.	DATE	BY-CHKD	REVISIONS	PART NUMBER	GRIP RANGE		"A"		"T" MAX.	PAWL STYLE
					MIN.	MAX.	MIN.	MAX.		
A	13JAN95	JSS	PRN: 64-187							
B	02FEB95	JSS	PRN: 64-187A	64-10-131-50	1.2	2	10.4	12.7	1.6	1
				64-10-132-50	2	2.8	11.2	13.5	2.4	2
				64-10-133-50	2.8	3.6			3.2	3
				64-10-114-50	6	6.7	11.9	14.2	6.4	4
				64-10-135-50	12.3	13.1			7.1	5
				64-10-136-50	18.6	19.4			7.1	6

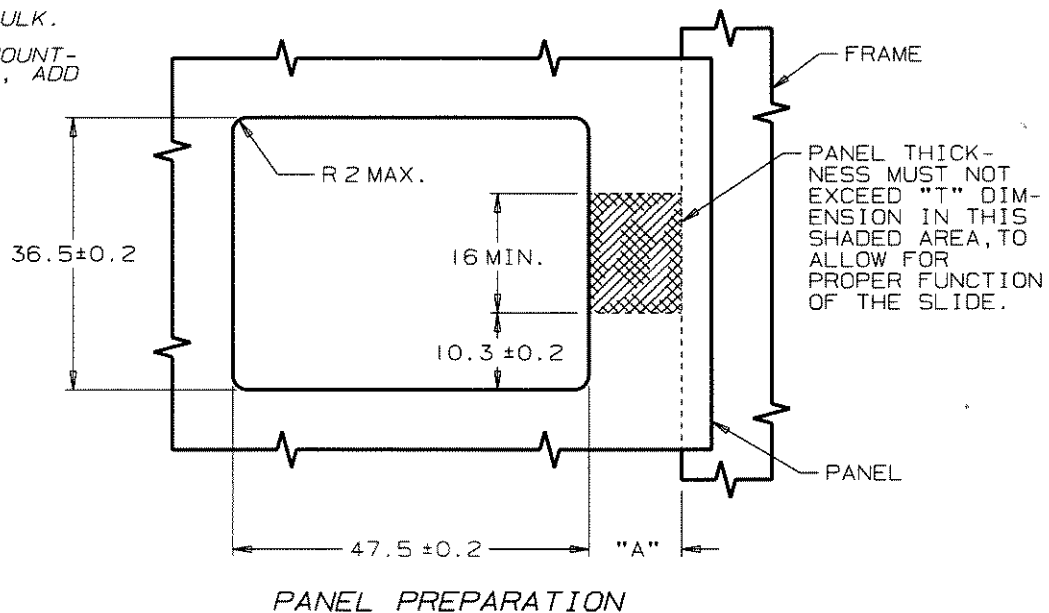
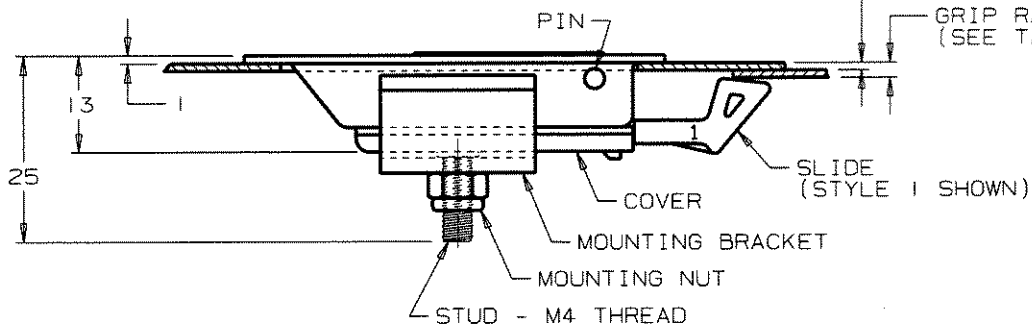
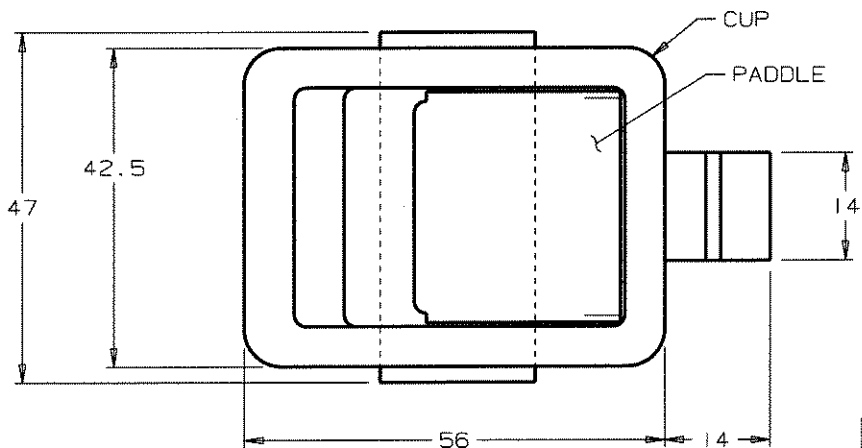
FOR AN ASSEMBLY WITH A BLACK POLYESTER POWDER COATED CUP, PADDLE AND COVER; CHANGE THE LAST DIGIT OF THE PART NUMBER TO "5".
EXAMPLE: 64-10-131-55

LATCH, MOUNTING BRACKET AND NUT ARE SHIPPED SEPARATELY, BULK.

AN OPTIONAL METHOD OF PACKAGING IS ONE ASSEMBLY (LATCH, MOUNTING BRACKET AND NUT) PER BAG. IF THIS METHOD IS PREFERRED, ADD "-2" TO THE END OF THE PART NUMBER.
EXAMPLE: 64-10-131-50-2

INSTALLATION INSTRUCTIONS

PREPARE A RECTANGULAR HOLE IN PANEL, AS SHOWN. INSERT LATCH AND PLACE MOUNTING BRACKET OVER STUD. SECURE BRACKET WITH THE MOUNTING NUT.



PANEL PREPARATION

MATERIAL AND FINISH

CUP, PADDLE AND COVER: 304 STAINLESS STEEL, PASSIVATED PLUS SATIN BRUSHED FINISH.
SLIDE: GLASS REINFORCED NYLON, NATURAL.
PIN: 302 STAINLESS STEEL, PASSIVATED.
SPRINGS: 302 STAINLESS STEEL, PASSIVATED.
STUD: 304 STAINLESS STEEL, PASSIVATED.
MOUNTING BRACKET: 302 STAINLESS STEEL, PASSIVATED.
MOUNTING NUT: 304 STAINLESS STEEL, PASSIVATED WITH A NYLON INSERT.