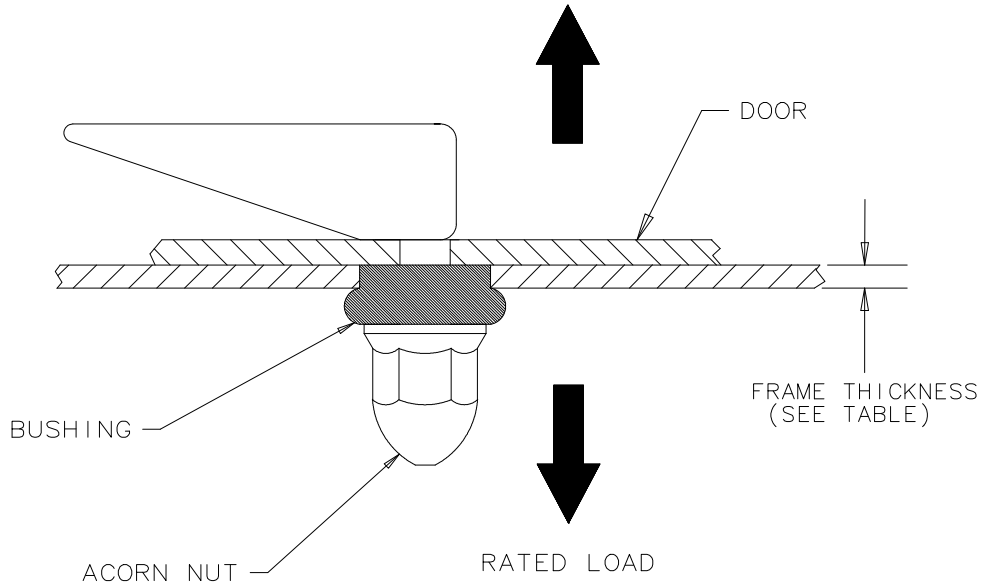


SOUTHCO PERFORMANCE GUIDELINES
THE PERFORMANCE GUIDELINES SHOWN ON THIS PAGE ARE SUPPLIED AS A GENERAL GUIDE ONLY, AS CONDITIONS VARY WITH EACH APPLICATION AND METHOD OF INSTALLATION. STRENGTH DATA GIVEN IS FOR FAILURE OF THE PRODUCT OR FOR SUFFICIENT DEFORMATION TO MAKE PRODUCT INOPERABLE. NO SAFETY FACTOR HAS BEEN APPLIED IT IS RECOMMENDED THAT THE USER REQUEST A PRODUCT SAMPLE FOR TESTING TO DETERMINE THE SUITABILITY OF THE PRODUCT FOR THE PURPOSE INTENDED AND USER'S PARTICULAR APPLICATION.



PART NUMBER	FRAME THICKNESS mm (in)	HOLE DIAMETER mm (in)	RATED LOAD* (SHORT TERM)
19-50-XX OR 19-51-XX	1.5 (.059)	13.5 (.53)	400 N (90 lbs.)
	2.5 (.098)	13.5 (.53)	690 N (155 lbs.)
19-54-XX	3.2 (.125)	13.9 (.55)	620 N (140 lbs.)
	4.8 (.190)		190 N (43 lbs.)

* Cycle Life: 30,000 cycles at room temperature.

* Rated load determined at a test load rate of 5mm/min (.2in/min). Latches should not be loaded continuously at values near to the short term rated load.