
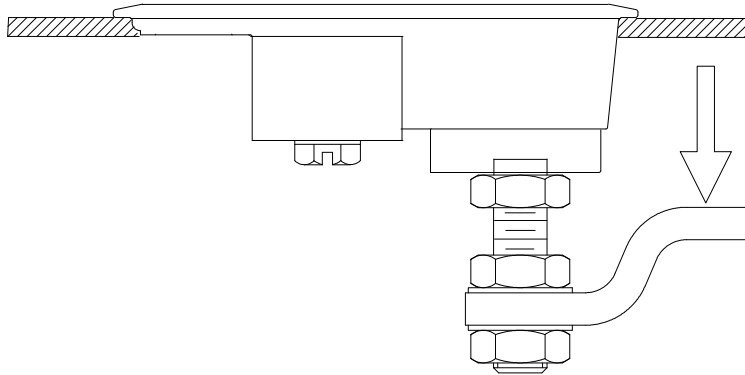


southco® PROPRIETARY ITEM - EXCEPT FOR USES EXPRESSLY GRANTED IN WRITING, INFORMATION DISCLOSED HEREON IS CONFIDENTIAL AND ALL RIGHTS, PATENT AND OTHERWISE ARE RESERVED BY SOUTHCO, INC.	DATE	09APR2002	DRAWN/CHKD	GDM	DESCRIPTION	UPDATE FORMAT	No. 62 FASTENER - 800 SERIES		DATE	6JUL76	DRAWN/CHKD	PEK	SCALE	NTS	DRAWING NUMBER	TD-62-8-J	THIRD ANGLE PROJECTION  A PAPER SIZE
	REV	B															

SOUTHCO PERFORMANCE GUIDELINES

THE PERFORMANCE GUIDELINES SHOWN ON THIS PAGE ARE SUPPLIED AS A GENERAL GUIDE ONLY. AS CONDITIONS VARY WITH EACH APPLICATION AND METHOD OF INSTALLATION, STRENGTH DATA GIVEN IS FOR FAILURE OF THE PRODUCT OR FOR SUFFICIENT DEFORMATION TO MAKE PRODUCT INOPERABLE. NO SAFETY FACTOR HAS BEEN APPLIED. IT IS RECOMMENDED THAT THE USER REQUEST A PRODUCT SAMPLE FOR TESTING TO DETERMINE THE SUITABILITY OF THE PRODUCT FOR THE PURPOSE INTENDED AND USER'S PARTICULAR APPLICATION.



No. 62 LIFT AND TURN LATCH - 800 SERIES

FASTENER YIELDED WHEN A LOAD OF 1335 N (300 LBS) WAS APPLIED IN THE DIRECTION OF THE ARROW.