

DATE	DRAWN	CHKD	SCALE	DRAWING NUMBER
MAY 1992	G J C		- -	TD-80-1-J

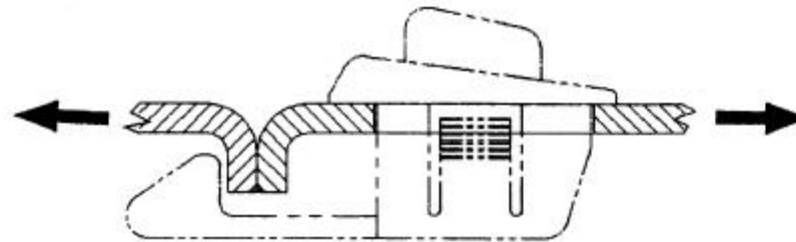
REV. A 4/10/2002 MJS UPDATED LOGO

GENERAL PERFORMANCE GUIDELINES  
 THE INFORMATION SHOWN ON THIS PAGE WAS DETERMINED UNDER  
 ON SET OF TEST CONDITIONS AND IS SUPPLIED AS A GENERAL GUIDE  
 ONLY. NO SAFETY FACTOR HAS BEEN APPLIED. IT IS RECOMMENDED  
 THAT THE USER TEST THE PRODUCT IN THEIR APPLICATION.

PART NUMBERS

80-201  
 80-202

80-501  
 80-502



MAXIMUM RECOMMENDED  
 WORKING LOAD

AVERAGE ULTIMATE  
 TENSILE LOAD

90 NEWTONS (20 POUNDS)

150 NEWTONS (34 POUNDS)

CYCLE LIFE - 100,000 CYCLES

PART NO. 80-20X  
 SHOWN

FORMAT A 3/88

PROPRIETARY ITEM - EXCEPT FOR USES EXPRESSLY GRANTED IN WRITING  
 INFORMATION DISCLOSED HEREON IS CONFIDENTIAL AND ALL RIGHTS PATENT  
 AND OTHERWISE ARE RESERVED BY SOUTHCO, INC.

DRAWING NUMBER
TD-80-1-J