



# No 97 DRAW CATCH - MOUNTING SPECIFICATIONS

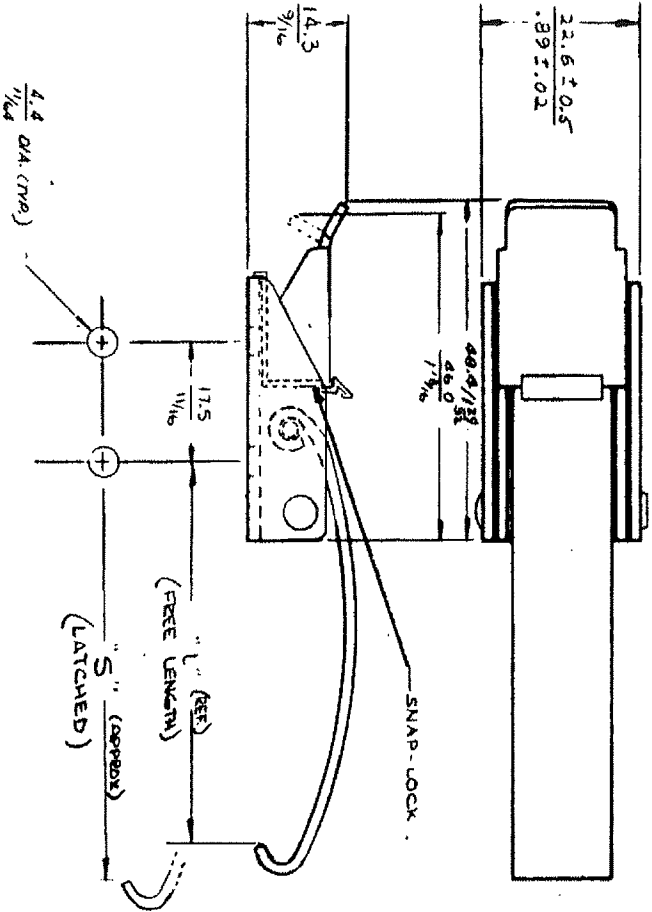
ASSEMBLIES WITH SNAP-LOCK

DATE	DRAWN	CHKD	SCALE	DRAWING NUMBER
12-22-83	TCC		NTS	J-97-50-21-1

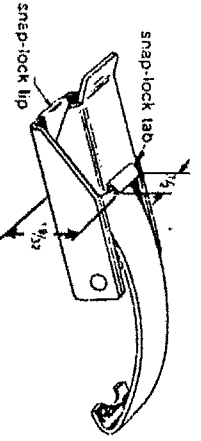
REV E / 02JUL2015 / P2015-1305 / CMS/NJF

LEVER STYLE	SPRING RATING	SPRING LENGTH	PART NUMBER		L	S
			ACTUATING TAB UP	ACTUATING TAB DOWN		
HEAVY DUTY	HEAVY DUTY	SHORT	97-50-110-2X	97-50-110-2X	29.4 / 1 5/32	31.8 / 1 1/4
	LIGHT DUTY	MEDIUM	97-50-170-2X	97-50-170-2X	42.1 / 1 11/32	44.8 / 1 3/4
HEAVY DUTY	HEAVY DUTY	LONG	97-50-130-2X	97-50-130-2X	54.8 / 2 1/2	57.1 / 2 1/4
	LIGHT DUTY	SHORT	97-50-150-2X	97-50-150-2X	28.4 / 1 1/32	31.8 / 1 1/4
HEAVY DUTY	HEAVY DUTY	MEDIUM	97-50-160-2X	97-50-160-2X	42.1 / 1 11/32	44.8 / 1 3/4
	LIGHT DUTY	LONG	97-50-170-2X	97-50-170-2X	54.8 / 2 1/2	57.1 / 2 1/4
HEAVY DUTY	HEAVY DUTY	SHORT	97-50-210-2X	97-50-210-2X	28.4 / 1 1/32	31.8 / 1 1/4
	LIGHT DUTY	MEDIUM	97-50-220-2X	97-50-220-2X	42.1 / 1 11/32	44.8 / 1 3/4
HEAVY DUTY	HEAVY DUTY	LONG	97-50-230-2X	97-50-230-2X	54.8 / 2 1/2	57.1 / 2 1/4
	LIGHT DUTY	SHORT	97-50-250-2X	97-50-250-2X	28.4 / 1 1/32	31.8 / 1 1/4
HEAVY DUTY	HEAVY DUTY	MEDIUM	97-50-260-2X	97-50-260-2X	42.1 / 1 11/32	44.8 / 1 3/4
	LIGHT DUTY	LONG	97-50-270-2X	97-50-270-2X	54.8 / 2 1/2	57.1 / 2 1/4

*PART NUMBER SUFFIX - INDICATES MATERIAL & FINISH*  
 -21 ~ LEVER, BASE AND SPRING - STEEL; ZINC PLATE OR LIGHT. PIN & RIVET - S/S ; NATURAL  
 SNAP LOCK - STEEL; ZINC PLATE PLUS BLACK ORGANIC COATING  
 -22 ~ LEVER, BASE AND SPRING - STAINLESS STEEL, PASSIVATED  
 PIN AND RIVET - STAINLESS STEEL, NATURAL  
 SNAP LOCK - STAINLESS STEEL, BLACK ORGANIC COATING



NOTE ~ SNAP-LOCK SHIPPED UNASSEMBLED



To install

While installing latch base, position turned down tip of snap-lock against rear edge of base to align mounting holes. Insert mounting screw or rivet through both parts.

To open, push snap-lock tab forward and lift latch lever.

To close, just push lever back down, snap-lock will spring to locked position.

PROPRIETARY ITEM- EXCEPT FOR USES EXPRESSLY GRANTED IN WRITING, INFORMATION DISCLOSED HEREON IS CONFIDENTIAL AND ALL RIGHTS, PATENT AND OTHERWISE, ARE RESERVED BY SOUTHCO, INC.

DRAWING NUMBER  
J-97-50-21-1

1/11/24