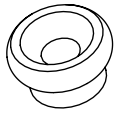


NOTES:

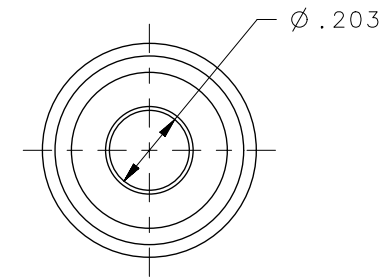
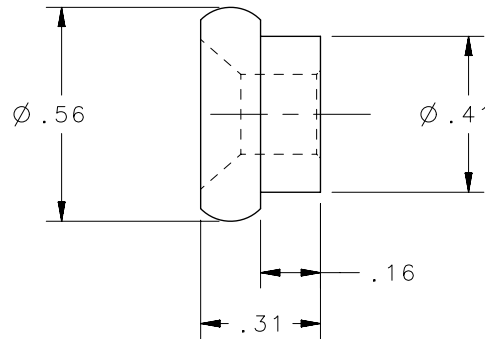
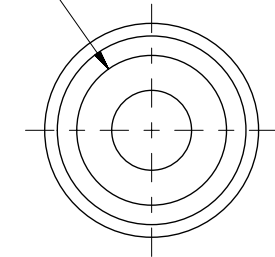
- A. ZINC PLATE PLUS BRIGHT CHROMATE DIP.
- B. BLACK ORGANIC COATING.

REVISION HISTORY			
REV	DATE	BY	DESCRIPTION
E	22JAN2019	CB1/DMS	PRN: P2019-0168



SCALE 1:1

C'SINK 82° TO Ø.39



97-67-105-24	KEEPER	STAINLESS STEEL	PASSIVATED
97-67-105-15	KEEPER	STEEL	SEE NOTE B
97-67-105-11	KEEPER	STEEL	SEE NOTE A
SOUTHCO PART NUMBER	TYPE OF COMPONENT	MATERIAL	FINISH

<p>THIRD ANGLE PROJECTION</p>	<p><b>southco</b><sup>®</sup></p> <p>CONNECT • CREATE • INNOVATE</p>			
				<p>INCHES [MM]</p>
	<p>TOLERANCES UNLESS OTHERWISE NOTED</p>			
	<p>ALL DIMENSIONS WITHOUT TOLERANCES ARE FOR REFERENCE ONLY.</p>			
<p>PROPRIETARY ITEM</p> <p>EXCEPT FOR USES EXPRESSLY GRANTED IN WRITING, INFORMATION DISCLOSED HEREON IS CONFIDENTIAL AND ALL RIGHTS, PATENT AND OTHERWISE, ARE RESERVED BY SOUTHCO, INC.</p>	<p>DESCRIPTION</p> <p>No. 97 KEEPER</p>	<p>SIZE</p> <p>A</p>	<p>SYSTEM</p> <p>NX</p>	<p>DWG NO.</p> <p>J-97-67-105</p>
<p>PER ASME Y14.5M-1994</p>	<p>DRAWN BY</p> <p>JGK</p>	<p>DATE</p> <p>13JUL1994</p>	<p>SCALE</p> <p>2:1</p>	<p>SHEET</p> <p>1 OF 1</p>