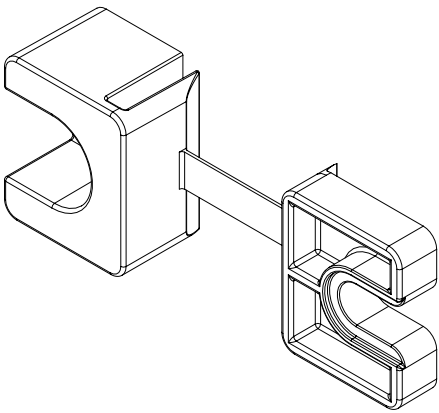
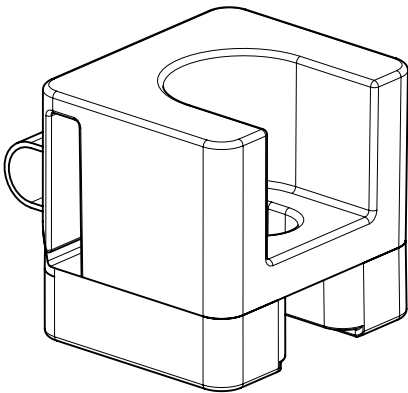


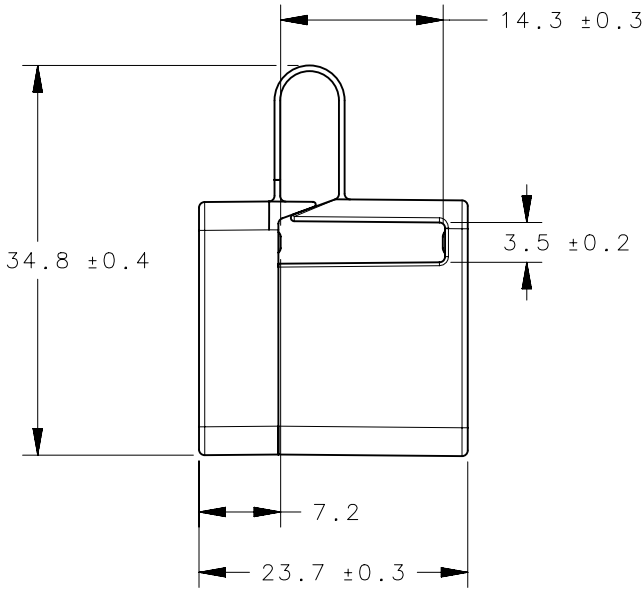
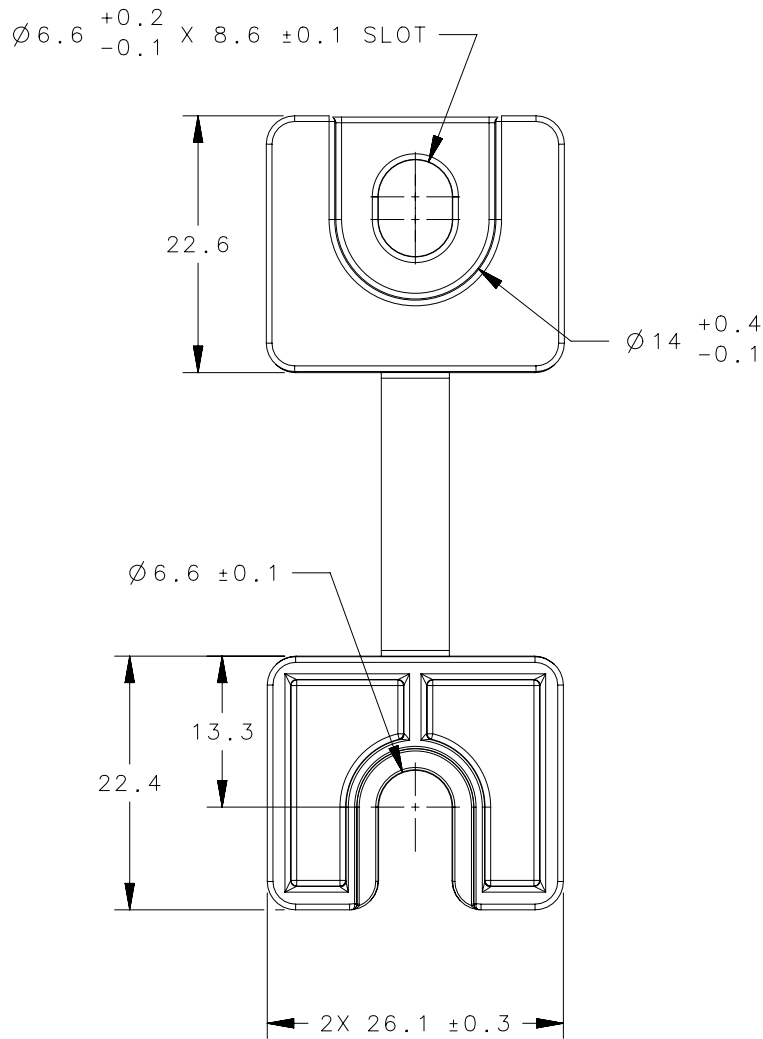
REVISION HISTORY			
REV	DATE	BY	DESCRIPTION
D	13JUL2018	NSB/DMS	PRN: P2018-1689




SCALE 1:1



AS INSTALLED



- NOTES:
- 1) RoHS COMPLIANT.
 - 2) ROD GUIDE IS DESIGNED TO BE MOUNTED ONTO M6X1 THREAD. STUDS AND SECURED IN PLACE WITH A STANDARD M6X1 NUT. IT CAN ALSO BE ATTACHED USING A STANDARD M6X1 BOLT THREADED INTO A PANEL NUT, OR STANDARD BOLT AND NUT.
 - 3) COSMETIC SPECIFICATION: ALL SURFACES UNLESS OTHERWISE NOTED ARE TO CONFORM TO A CLASS "B" DESIGNATION AS DESCRIBED IN SOUTHCO COSMETIC SPECIFICATION: S-121-04 FOR PLASTIC PARTS

A5-F90-71	GUIDE	GF15 PA66	UL-94VO	BLACK
PART NUMBER	TYPE OF COMPONENT	MATERIAL	FLAMABILITY	COLOR
	THIRD ANGLE PROJECTION	 CONNECT • CREATE • INNOVATE		
	MILLIMETERS [IN]			
	TOLERANCES UNLESS OTHERWISE NOTED	DESCRIPTION		
SURFACE AREA	ALL DIMENSIONS WITHOUT TOLERANCES ARE FOR REFERENCE ONLY.	FLAT ROD GUIDE		
VOLUME		SIZE	SYSTEM	DWG NO.
PROPRIETARY ITEM		A3	NX	J-A5-F90
EXCEPT FOR USES EXPRESSLY GRANTED IN WRITING, INFORMATION DISCLOSED HEREON IS CONFIDENTIAL AND ALL RIGHTS, PATENT AND OTHERWISE, ARE RESERVED BY SOUTHCO, INC.	PER ASME Y14.5M-1994	DRAWN BY	IR	DATE
			02APR2009	SCALE 1.5:1
				SHEET 1 OF 1