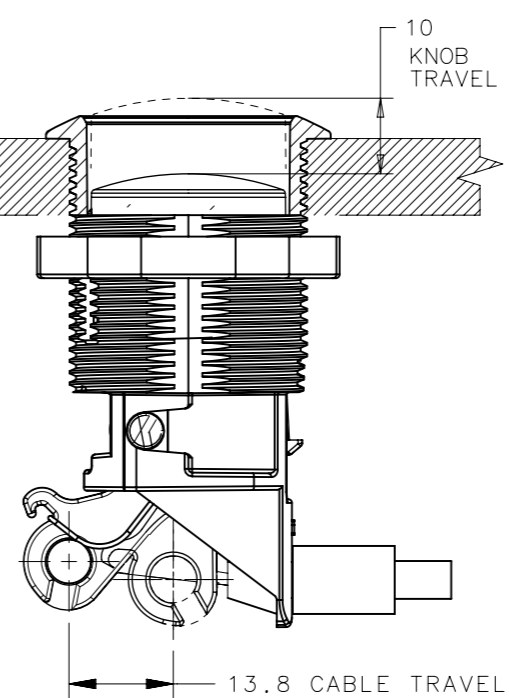
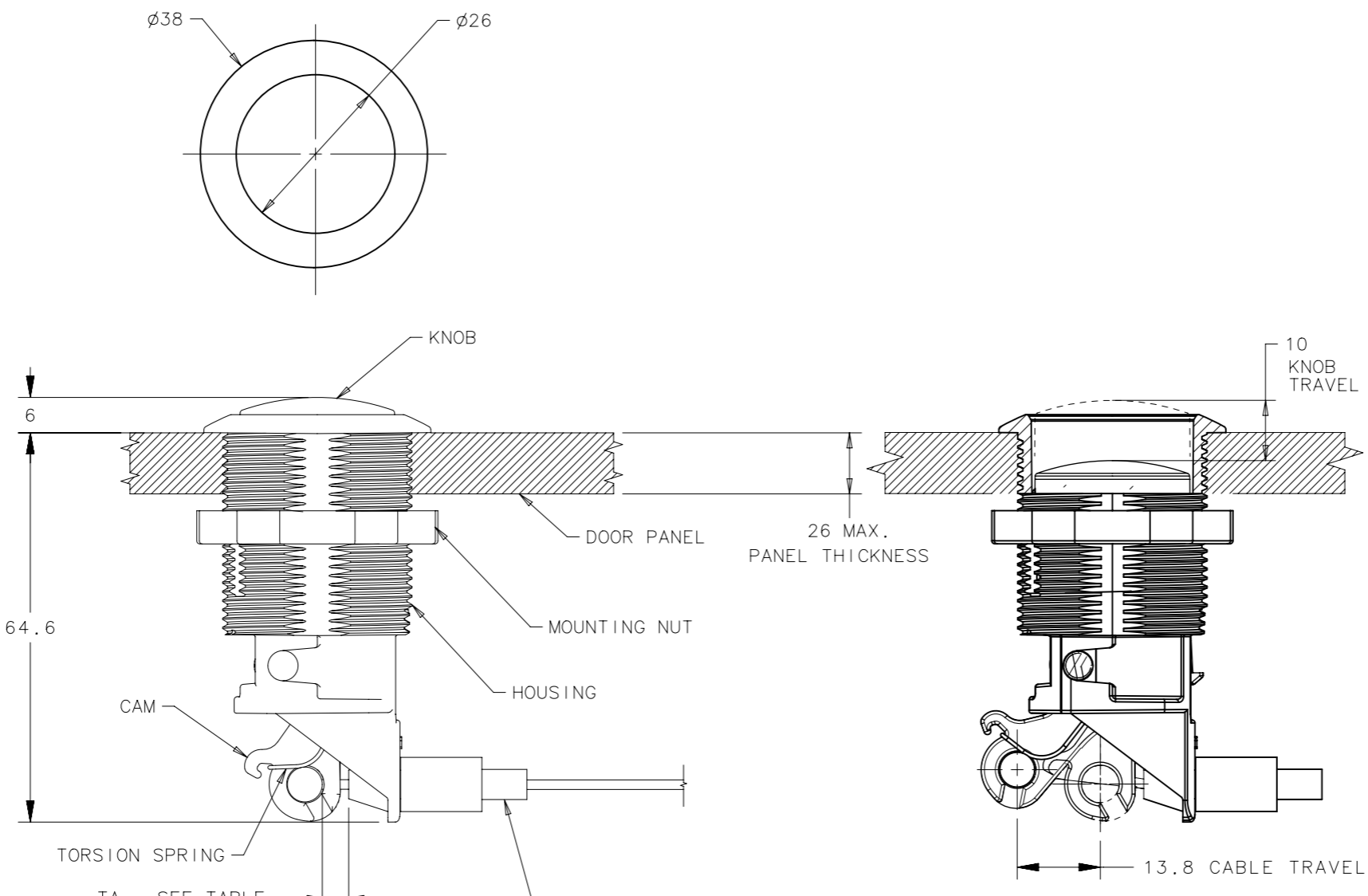
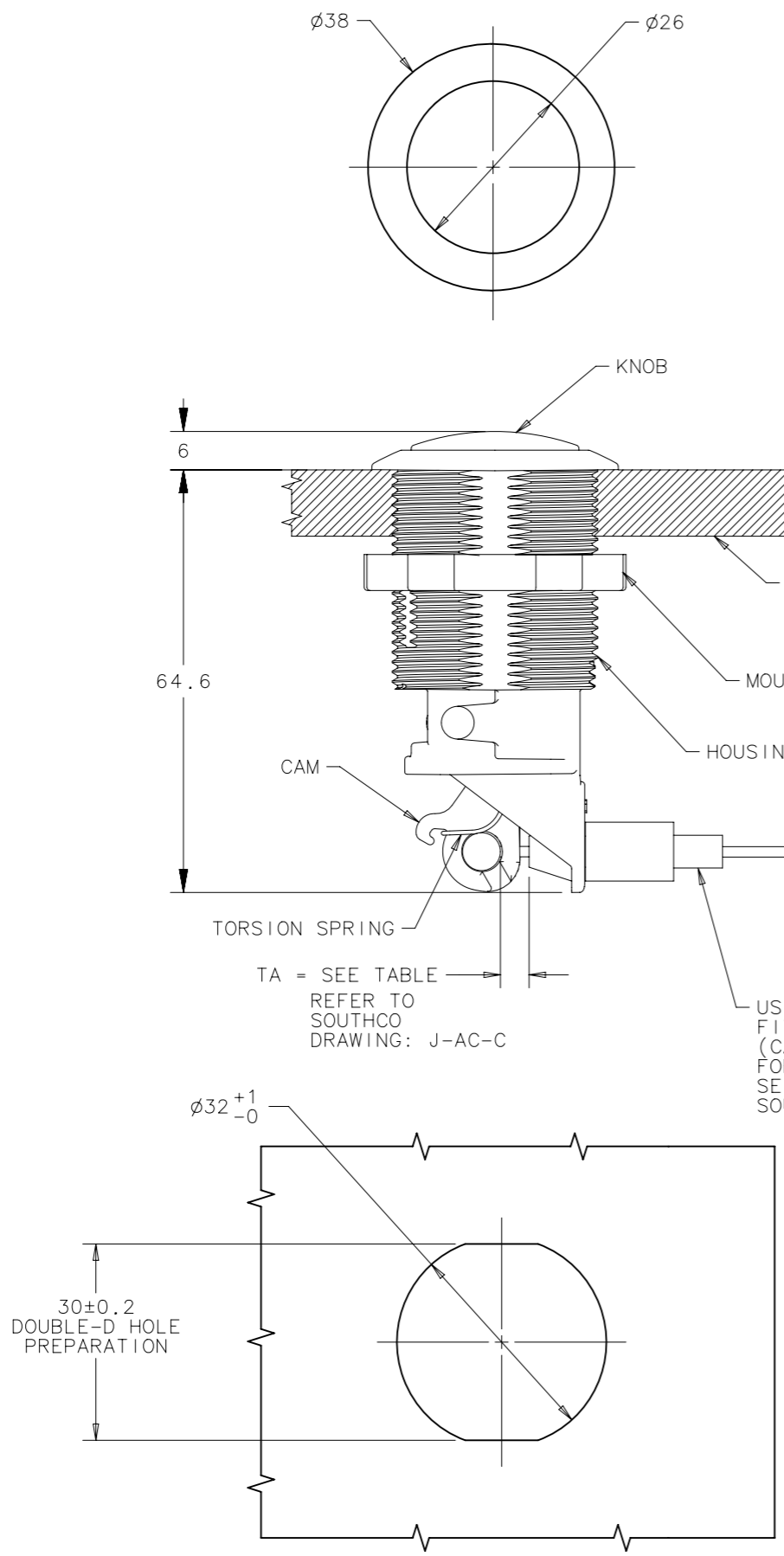
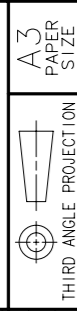


REV	DATE	DRAWN/CHKD	DESCRIPTION	ITEM	PART NUMBER	MATERIAL	FINISH	DRAWN	CHKD	SCALE
A	23JUL2008	CW/MJS	INITIAL DWG RELEASE	ASSEMBLY	AC-80-101-T1	-	-	CW	MJS	1:1
B	27MAY2009	RMD/LBT	PRN: 2009-0639	HOUSING	-	PC+ABS	BLACK			
C	28MAY2009	RMD/LBT	PRN: 2009-0665	KNOB	-	PC+ABS	BLACK			
D	11NOV2010	MJS	PRN: P2010-1120	CAM	-	GLASS FILLED NYLON	BLACK			
E	18SEP2017	CMS/MDW	PRN: P2017-2314	COMPRESSION SPRING	-	302 STAINLESS STEEL	PASSIVATED			
F	07DEC2017	NBK/VK	PRN: P2017-2993	TORSION SPRING	-	302 STAINLESS STEEL	PASSIVATED			
G	20SEP2021	OAP/MBT	PRN: P2021-1847	MOUNTING NUT	-	GLASS FILLED NYLON	BLACK			

MILLIMETERS
ALL DIMENSIONS WITHOUT TOLERANCES ARE FOR REFERENCE ONLY.



OPEN POSITION

USE SOUTHCO CABLE END FITTING TYPE A [BARREL TYPE] (CABLE SOLD SEPARATELY). FOR CABLE CONFIGURATION, SEE CABLE CONFIGURATOR ON SOUTHCO.COM

CABLE ORIENTATION	PANEL THICKNESS	TA VALUES	
		CABLE TYPE 5	CABLE TYPE 6 OR 7
PLACEMENT #2	16 MAX.	TA=4	TA=9

- INSTALLATION NOTES:
1. PREPARE PANEL AS SHOWN
 2. INSERT ACTUATOR ASSEMBLY THROUGH HOLE AND TIGHTEN NUT (38 ACROSS FLATS). RECOMMENDED TORQUE: 4.2 N-m MAX.
 3. INSERT CABLE BARREL FITTING IN KNOB ACTUATOR HOLE, THEN SNAP CABLE SLEEVE TO HOUSING TO SECURE CABLE.
 4. SEE TABLE FOR APPROPRIATE CABLE SELECTION.

- MATERIAL NOTES:
1. ZINC PLATED, CHROMATE AND SEALER

- PACKAGING NOTES:
1. MOUNTING NUT SHIPPED UNASSEMBLED WITH ACTUATOR ASSEMBLY IN SAME PLASTIC BAG.

PANEL PREPARATION

