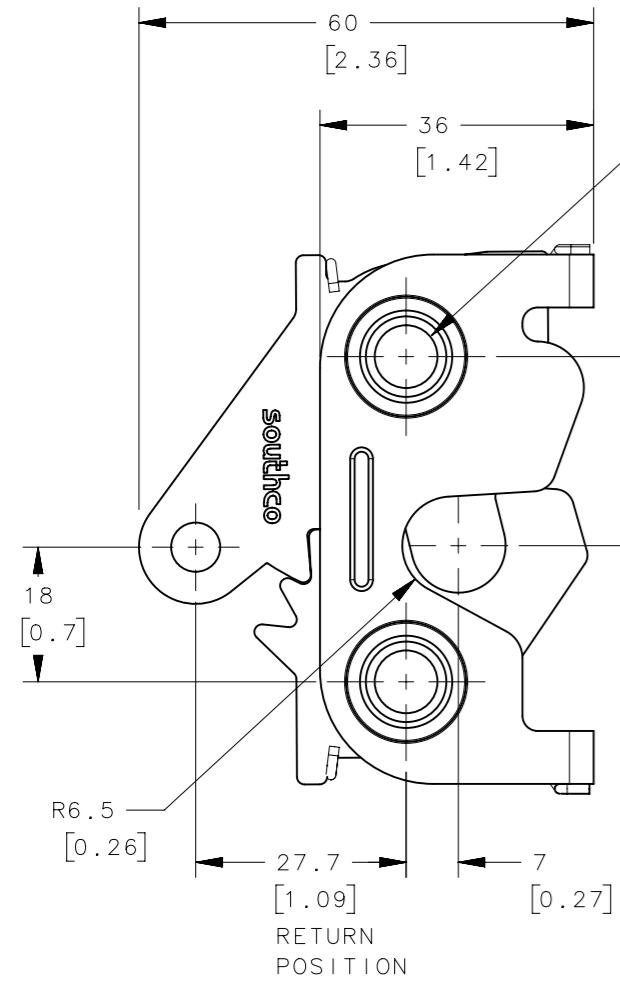
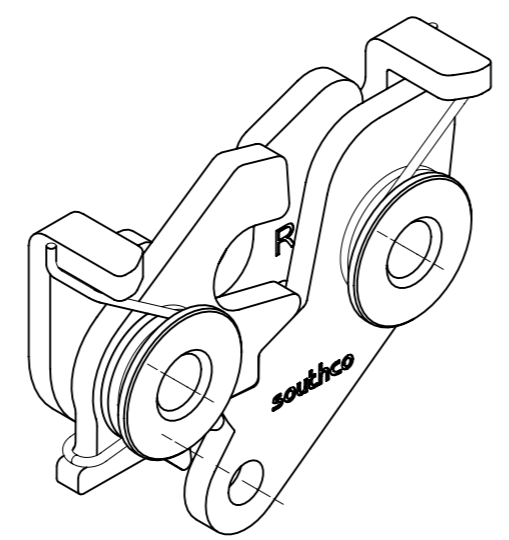
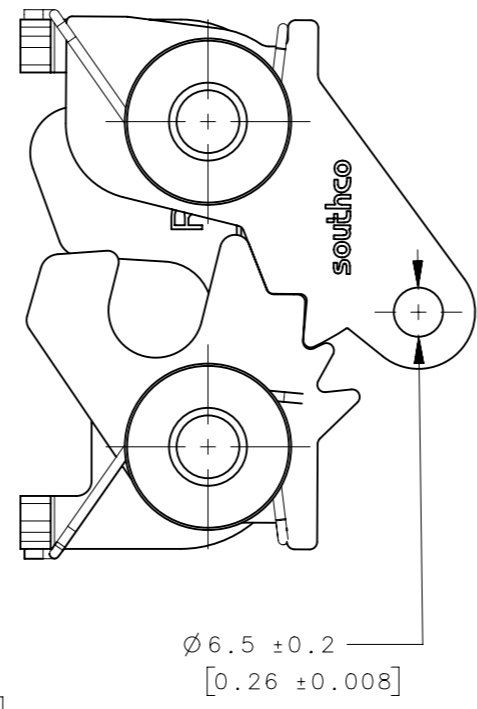
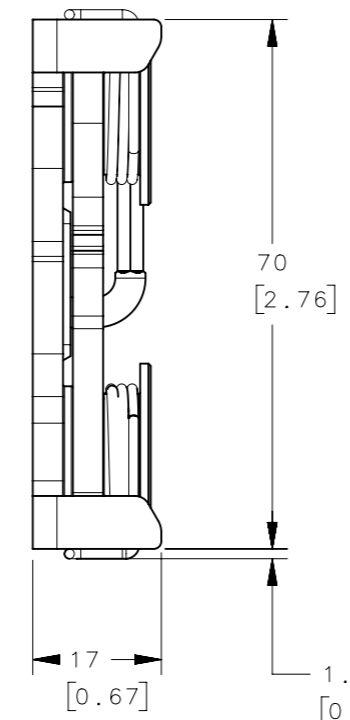


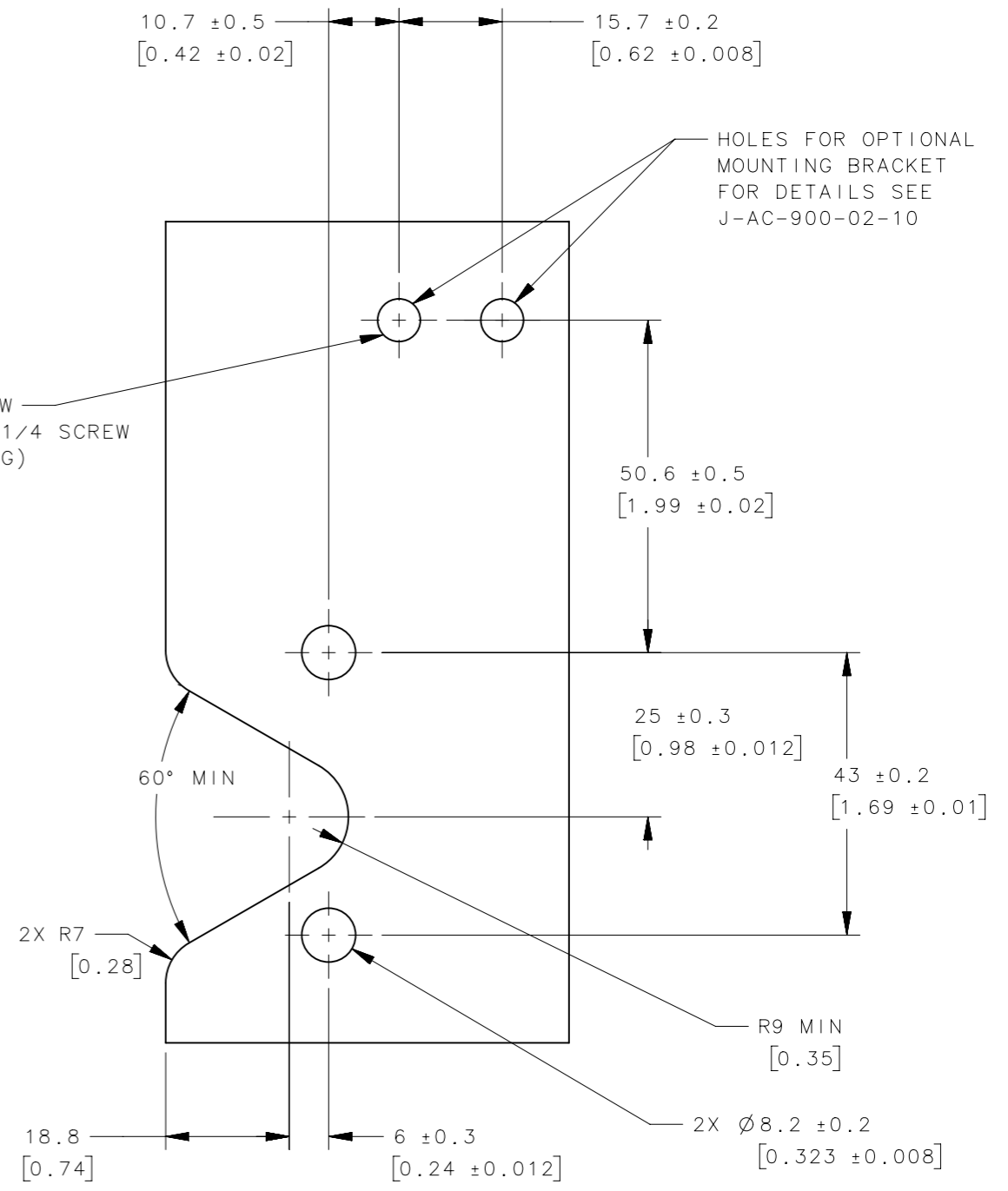
| REVISION HISTORY |           |         |                 |
|------------------|-----------|---------|-----------------|
| REV              | DATE      | BY      | DESCRIPTION     |
| L                | 19OCT2020 | SAK/DMS | PRN: P2020-1941 |



DIA. A  
SEE TABLE



2X Ø6.5 IF USING M6 SCREW  
2X H-SIZE DRILL IF USING 1/4 SCREW  
(FOR THROUGH HOLE MOUNTING)



HOLES FOR OPTIONAL  
MOUNTING BRACKET  
FOR DETAILS SEE  
J-AC-900-02-10

PANEL PREP

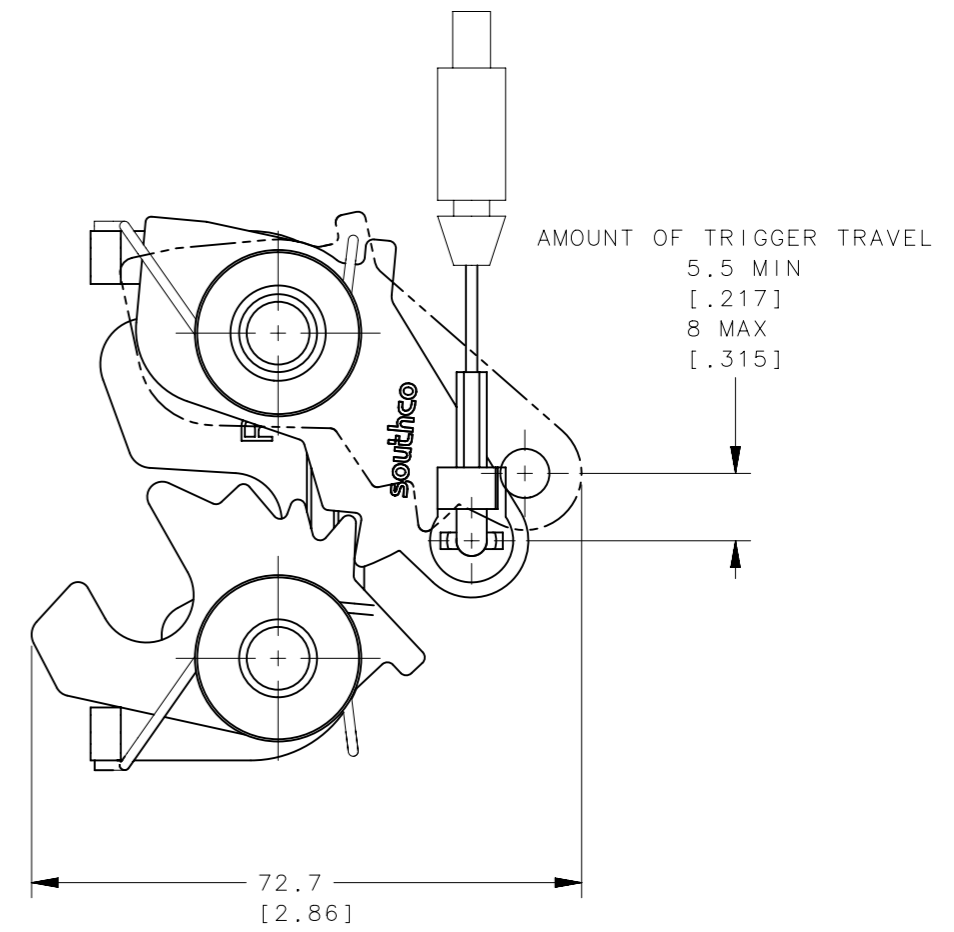
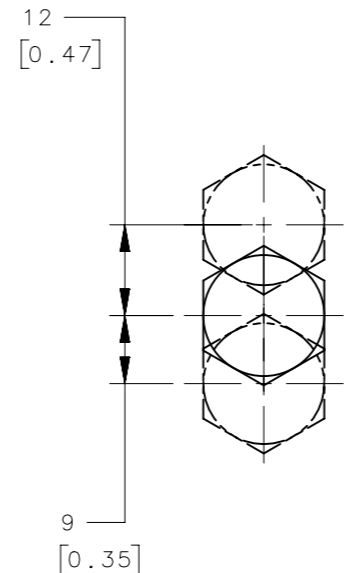
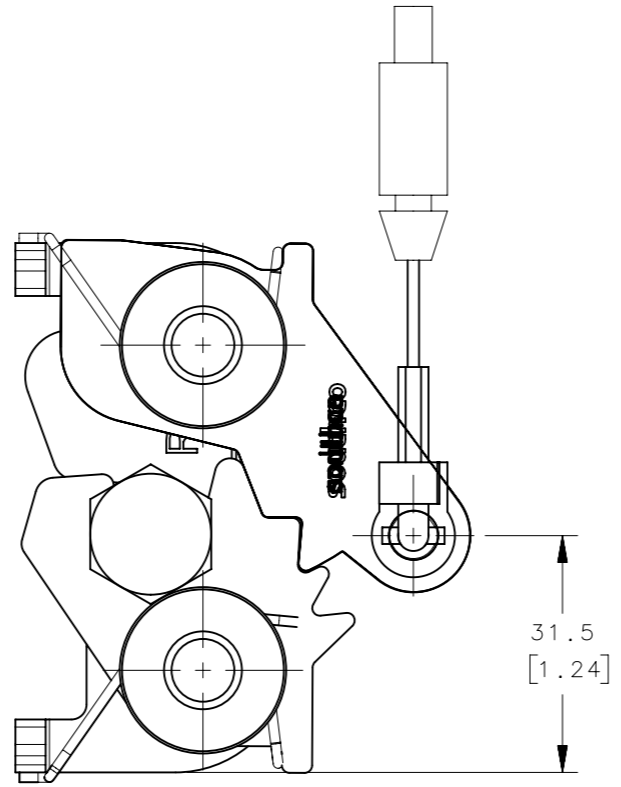
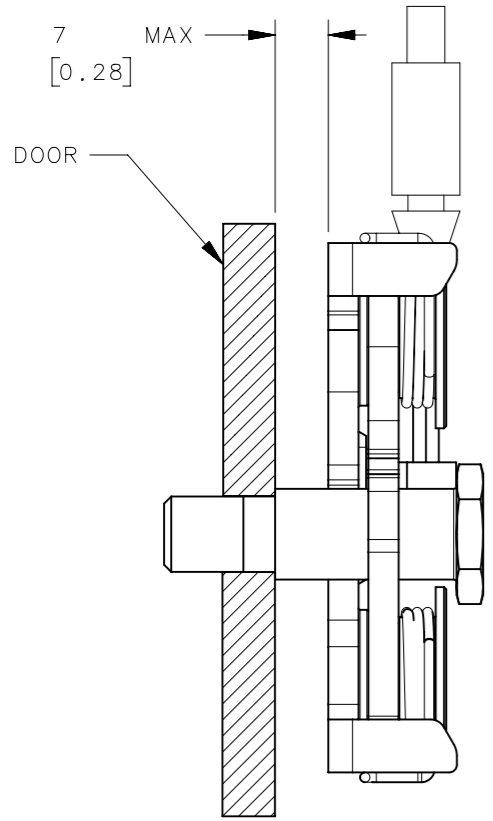
SEE NOTE C

- NOTES:
- A. MATERIAL AND FINISH:
    - HOUSING AND PIN: STEEL, ZINC PLATED, BRIGHT CHROMATE.
    - PAWL AND TRIGGER: HARDENED STEEL, ZINC PLATED, BRIGHT CHROMATE.
    - SPRING: STAINLESS STEEL, PASSIVATED
  - B. REFER TO TRADE DRAWING J-AC-C FOR CABLE SELECTION.
  - C. THESE DIMENSIONS REQUIRED FOR MOUNTING STRIKER BOLT.

| SOUTHCO PART NUMBER | ITEM                     | DIMENSION A | MATERIAL   | FINISH     |
|---------------------|--------------------------|-------------|------------|------------|
| R4-20-30-501-10     | Ø8.3 THRU ASSEMBLY       | Ø8.3±.12    | SEE NOTE A | SEE NOTE A |
| R4-20-31-501-10     | M8 THREAD ASSEMBLY       | M8 x 1.25   | SEE NOTE A | SEE NOTE A |
| R4-20-32-501-10     | 5/16 -18 THREAD ASSEMBLY | 5/16 - 18   | SEE NOTE A | SEE NOTE A |

|  |  |                                     |                   |
|--|--|-------------------------------------|-------------------|
| THIRD ANGLE PROJECTION   |  |                                     |                   |
| MILLIMETERS [IN]   |  |                                     |                   |
| TOLERANCES UNLESS OTHERWISE NOTED  |  | DESCRIPTION                         |                   |
| SURFACE AREA<br>XXXXXmm <sup>2</sup>   |  | R4-20 RIGHT HAND ASSEMBLY TWO-STAGE |                   |
| VOLUME<br>XXXXXmm <sup>3</sup>   |  | SIZE SYSTEM<br>A3 NX                |                   |
| PROPRIETARY ITEM<br>EXCEPT FOR USES EXPRESSLY GRANTED<br>IN WRITING, INFORMATION DISCLOSED<br>HEREON IS CONFIDENTIAL AND ALL<br>RIGHTS, PATENT AND OTHERWISE,<br>ARE RESERVED BY SOUTHCO, INC. |  | DWG NO.<br>J-R4-20-30-501           |                   |
| PER ASME Y14.5M-1994   |  | DRAWN BY<br>ACH/DRS                 | DATE<br>26MAR2009 |
|  |  | SCALE<br>1:1                        | SHEET<br>1 OF 3   |

| REVISION HISTORY |           |         |                 |
|------------------|-----------|---------|-----------------|
| REV              | DATE      | BY      | DESCRIPTION     |
| L                | 19OCT2020 | SAK/DMS | PRN: P2020-1941 |



NOTES:

MISALIGNMENT VIEW  
(SEE NOTE A)

A. THE TOLERANCE BETWEEN THE LATCH AND THE STRIKER BOLT ASSUMES A NON-RIGID DOOR INSTALLATION THAT WILL ALLOW THE DOOR TO MOVE INTO THE NOMINAL POSITION DURING LATCHING. RIGID DOORS MUST HAVE THE STRIKER INSTALLED PER THE PANEL PREPARATION RECOMMENDATION.

|                     |                          |             |            |            |
|---------------------|--------------------------|-------------|------------|------------|
| R4-20-30-501-10     | ø8.3 THRU ASSEMBLY       | ø8.3±.12    | SEE NOTE A | SEE NOTE A |
| R4-20-31-501-10     | M8 THREAD ASSEMBLY       | M8 x 1.25   | SEE NOTE A | SEE NOTE A |
| R4-20-32-501-10     | 5/16 -18 THREAD ASSEMBLY | 5/16 - 18   | SEE NOTE A | SEE NOTE A |
| SOUTHCO PART NUMBER | ITEM                     | DIMENSION A | MATERIAL   | FINISH     |

|  |  |                                     |                  |                        |
|--|--|-------------------------------------|------------------|------------------------|
| THIRD ANGLE PROJECTION   |  | <br>CONNECT • CREATE • INNOVATE     |                  |                        |
| MILLIMETERS [IN]   |  |                                     |                  |                        |
| TOLERANCES UNLESS OTHERWISE NOTED  |  | DESCRIPTION                         |                  |                        |
| SURFACE AREA XXXXXmm <sup>2</sup>  |  | R4-20 RIGHT HAND ASSEMBLY TWO-STAGE |                  |                        |
| VOLUME XXXXXmm <sup>3</sup>  |  |                                     |                  |                        |
| PROPRIETARY ITEM   |  | SIZE A3                             | SYSTEM NX        | DWG NO. J-R4-20-30-501 |
| EXCEPT FOR USES EXPRESSLY GRANTED IN WRITING, INFORMATION DISCLOSED HEREON IS CONFIDENTIAL AND ALL RIGHTS, PATENT AND OTHERWISE, ARE RESERVED BY SOUTHCO, INC. |  | PER ASME Y14.5M-1994                | DRAWN BY ACH/DRS | DATE 26MAR2009         |
|  |  | SCALE 1:1                           | SHEET 2 OF 3     |                        |

| REVISION HISTORY |           |         |                 |
|------------------|-----------|---------|-----------------|
| REV              | DATE      | BY      | DESCRIPTION     |
| L                | 19OCT2020 | SAK/DMS | PRN: P2020-1941 |

NOTE:  
ASSEMBLY SHOWN WITH SOUTHCO CABLE FITTING "B"  
AND CALBE "13". SEE J-AC-C FOR DETAILS.

STRIKER BOLT  
PART NUMBER R4-91-2X1-10  
(SOLD SEPARATELY,  
SEE J-R4-91-200 FOR DETAILS)

OPTIONAL CLIP  
PART NUMBER R4-43922-1  
(SOLD SEPARATELY,  
SEE DRAWING J-R4-0-43922  
FOR DETAILS)

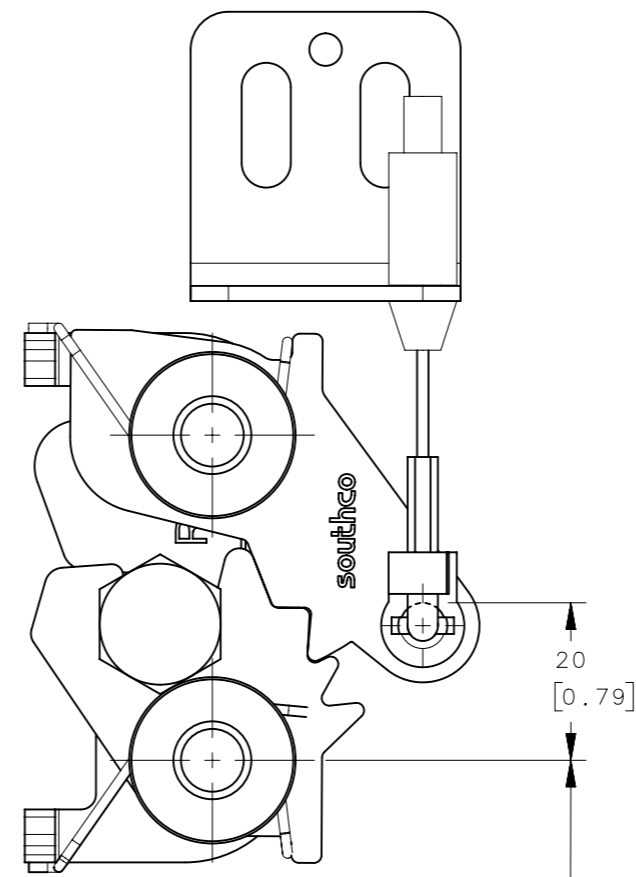
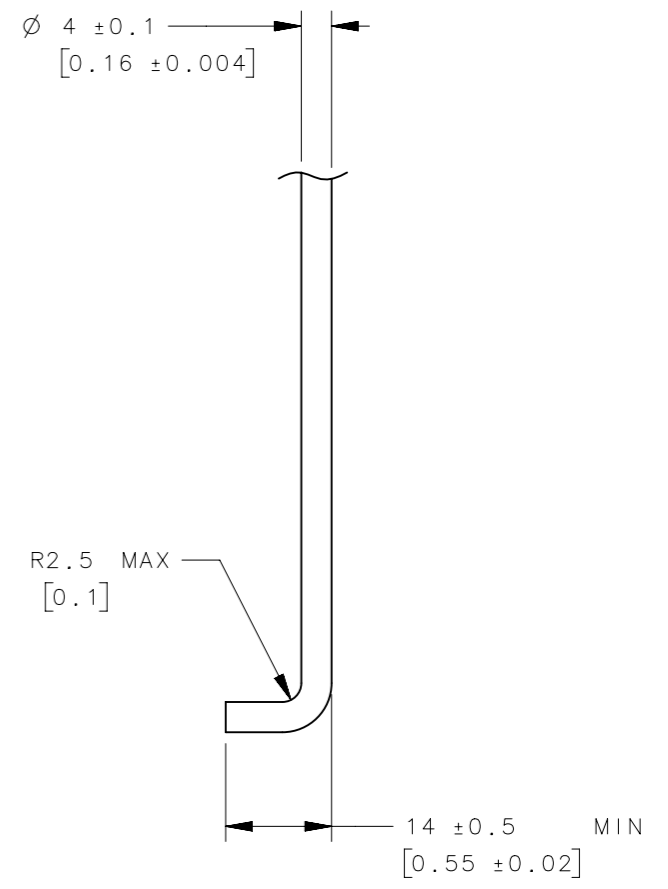
OPTIONAL CABLE ASSEMBLY  
MOUNTING BRACKET  
PART NUMBER AC-900-02-10  
(SOLD SEPARATELY)

INSTALL USING 3 SCREWS  
(2 MOUNTING, 1 SET)  
(SCREWS NOT SUPPLIED)  
SEE J-AC-90-02-10 FOR  
DETAILS

OPTIONAL CABLE ASSEMBLY  
MOUNTING BRACKET  
PART NUMBER AC-900-02-10  
(SOLD SEPARATELY)

INSTALL USING 3 SCREWS  
(2 MOUNTING, 1 SET)  
(SCREWS NOT SUPPLIED)  
SEE J-AC-90-02-10 FOR  
DETAILS

ROD OPTION



MOUNTING HOLE TO CABLE OR ROD  
BEARING POINT. USE TO DETERMINE THE  
OVERALL CABLE LENGTH. SEE J-AC-C FOR  
ADDITIONAL DETAILS.

| SOUTHCO PART NUMBER | ITEM                     | DIMENSION A | MATERIAL   | FINISH     |
|---------------------|--------------------------|-------------|------------|------------|
| R4-20-30-501-10     | ø8.3 THRU ASSEMBLY       | ø8.3±.12    | SEE NOTE A | SEE NOTE A |
| R4-20-31-501-10     | M8 THREAD ASSEMBLY       | M8 x 1.25   | SEE NOTE A | SEE NOTE A |
| R4-20-32-501-10     | 5/16 -18 THREAD ASSEMBLY | 5/16 - 18   | SEE NOTE A | SEE NOTE A |

|  |  |                                     |                     |                           |
|--|--|-------------------------------------|---------------------|---------------------------|
| THIRD ANGLE PROJECTION   |  | <br>CONNECT · CREATE · INNOVATE     |                     |                           |
| MILLIMETERS [IN]   |  |                                     |                     |                           |
| TOLERANCES UNLESS OTHERWISE NOTED  |  | DESCRIPTION                         |                     |                           |
| SURFACE AREA<br>XXXXXmm <sup>2</sup>   |  | R4-20 RIGHT HAND ASSEMBLY TWO-STAGE |                     |                           |
| VOLUME<br>XXXXXmm <sup>3</sup>   |  |                                     |                     |                           |
| PROPRIETARY ITEM   |  | SIZE<br>A3                          | SYSTEM<br>NX        | DWG NO.<br>J-R4-20-30-501 |
| EXCEPT FOR USES EXPRESSLY GRANTED<br>IN WRITING, INFORMATION DISCLOSED<br>HEREON IS CONFIDENTIAL AND ALL<br>RIGHTS, PATENT AND OTHERWISE,<br>ARE RESERVED BY SOUTHCO, INC. |  | PER ASME Y14.5M-1994                | DRAWN BY<br>ACH/DRS | DATE<br>26MAR2009         |
|  |  | SCALE<br>1:1                        | SHEET<br>3 OF 3     |                           |