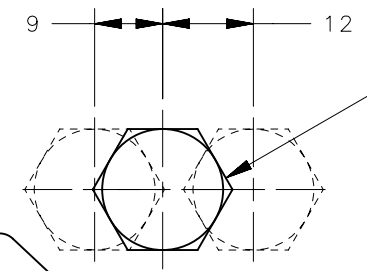
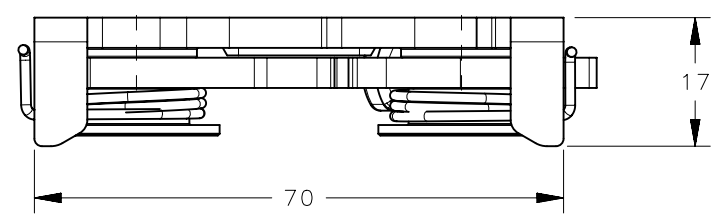
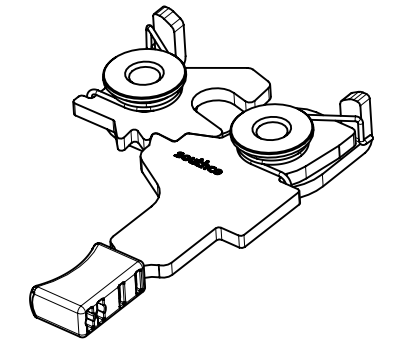


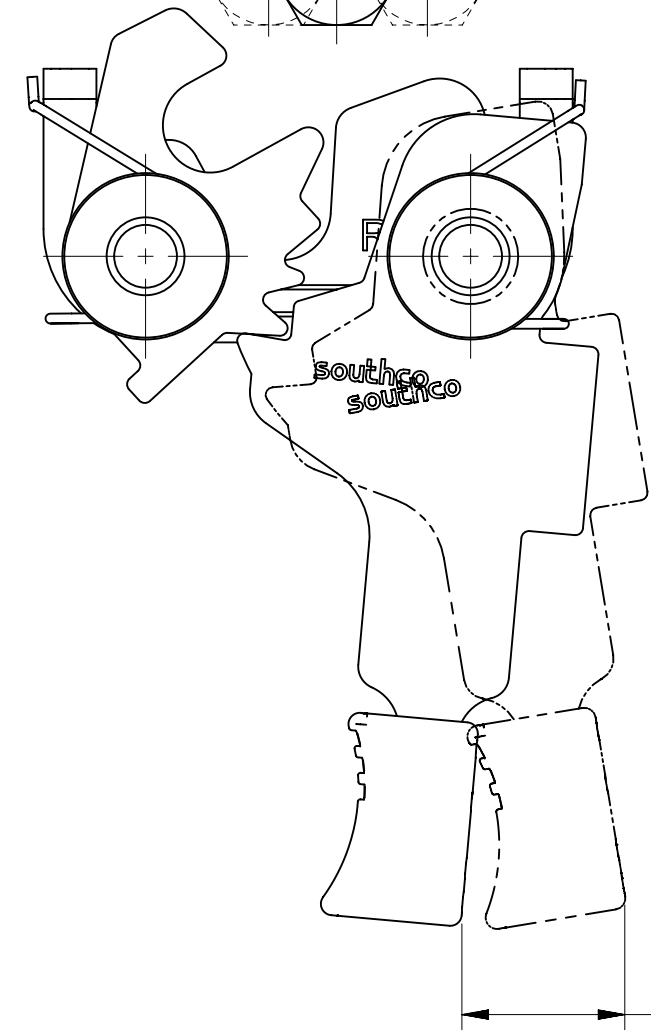
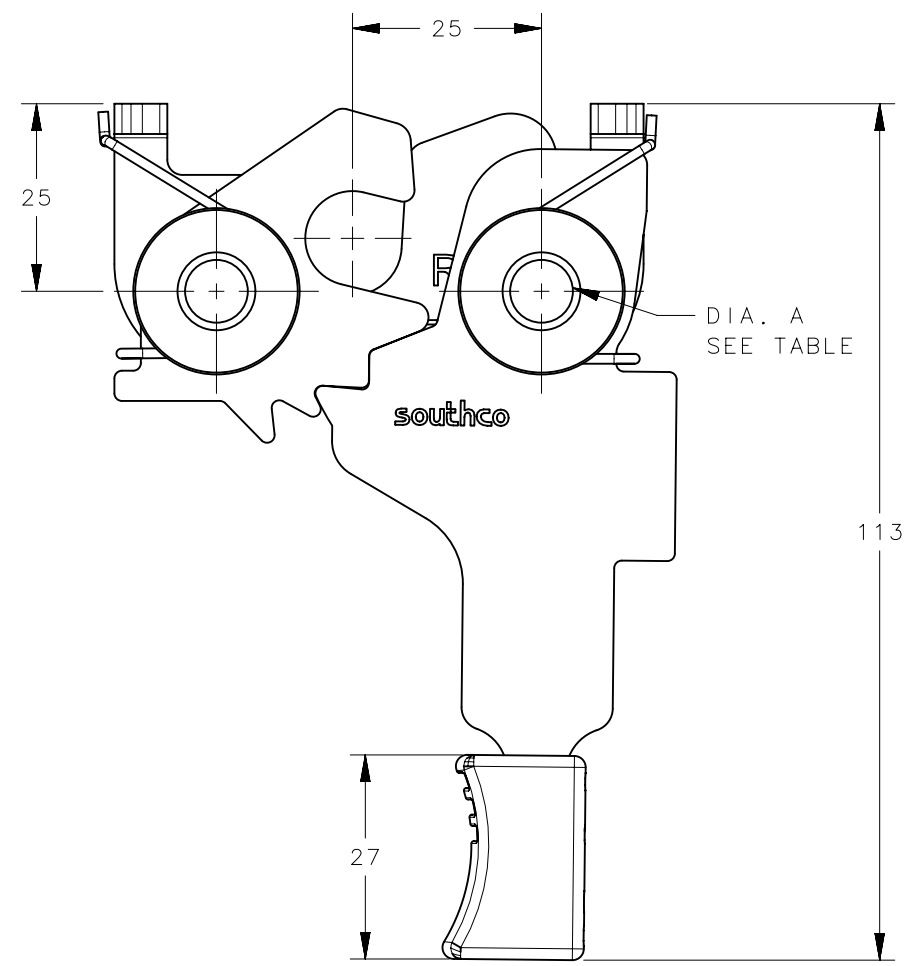
REVISION HISTORY			
REV	DATE	BY	DESCRIPTION
B	15JUN2016	VK/YGC	PRN: P2016-1381



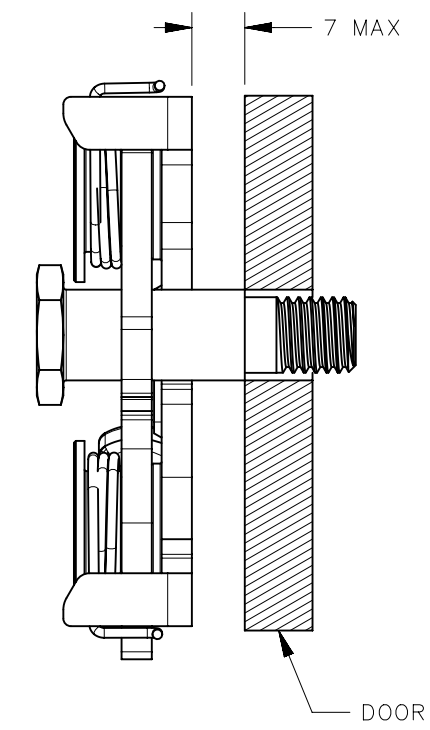
STRIKER BOLT
PART NUMBER R4-91-2X1-10
(SOLD SEPARATELY
SEE DRAWING J-R4-91-200 FOR DETAILS)



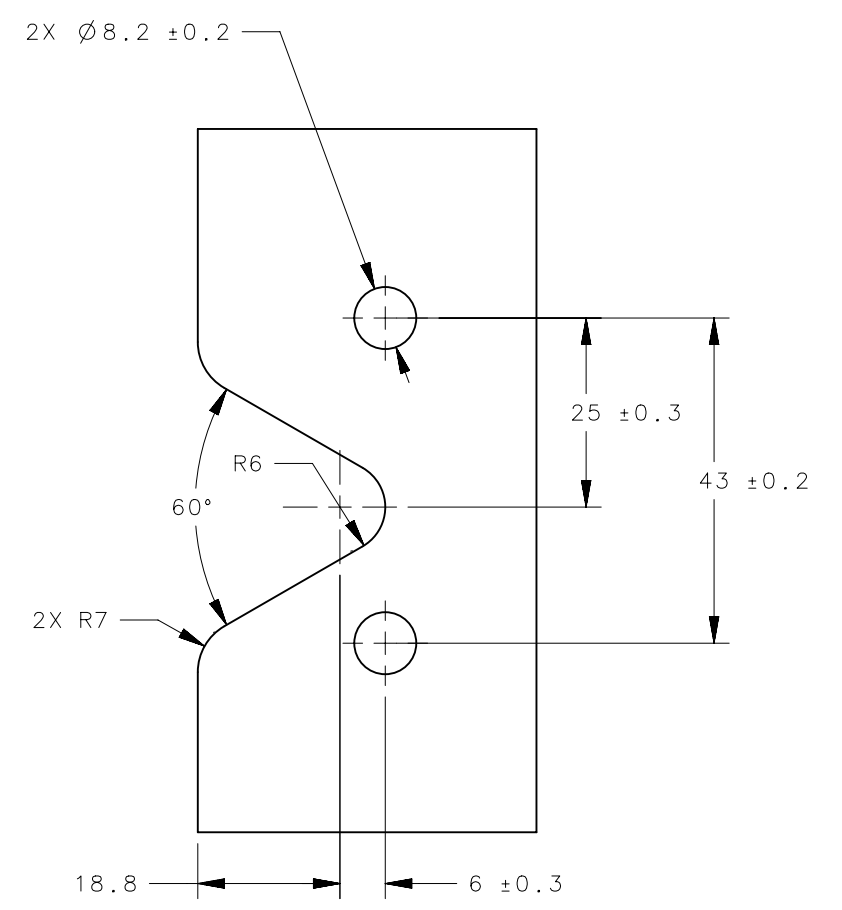
SCALE 1:2



MISALIGNMENT VIEW
(SEE NOTE 2)



22 AMOUNT OF TRIGGER TRAVEL



PANEL PREPARATION

NOTES:

- MATERIAL AND FINISH:
 - A. HOUSING AND PIN: STEEL, ZINC PLATED, BRIGHT CHROMATE
 - B. PAWL AND TRIGGER: HARDENED STEEL, ZINC PLATED BRIGHT CHROMATE.
 - C. SPRING: STAINLESS STEEL, PASSIVATED
- THE TOLERANCE BETWEEN THE LATCH AND STRIKER BOLT ASSUMES A NON-RIGID DOOR INSTALLATION THAT WILL ALLOW THE DOOR TO MOVE INTO THE NOMINAL POSITION DURING LATCHING. RIGID DOORS MUST HAVE THE STRIKER INSTALLED PER THE PANEL PREPERATION RECOMMENDATION.

R4-20-32-401-10	M8 ASSEMBLY	M8 X 1.25	SEE NOTE 1	SEE NOTE 1
R4-20-31-401-10	5/16-18 ASSEMBLY	5/16-18 THREAD	SEE NOTE 1	SEE NOTE 1
R4-20-30-401-10	8.3mm THRU ASSEMBLY	Ø 8.3 ± .12	SEE NOTE 1	SEE NOTE 1
PART NUMBER	ITEM	DIMENSION A	MATERIAL	FINISH

THIRD ANGLE PROJECTION	 CONNECT · CREATE · INNOVATE			
MILLIMETERS [IN]				
TOLERANCES UNLESS OTHERWISE NOTED	DESCRIPTION R4-20 RIGHT HAND ASSEMBLY DUAL STAGE WITH HANDLE			
ALL DIMENSIONS WITHOUT TOLERANCES ARE FOR REFERENCE ONLY.	SIZE A3	SYSTEM NX	DWG NO. J-R4-20-30-401	
PROPRIETARY ITEM EXCEPT FOR USES EXPRESSLY GRANTED IN WRITING, INFORMATION DISCLOSED HEREON IS CONFIDENTIAL AND ALL RIGHTS, PATENT AND OTHERWISE, ARE RESERVED BY SOUTHCO, INC.	PER ASME Y14.5M-1994	DRAWN BY VK	DATE 17FEB2016	SCALE 1:1 SHEET 1 OF 1