

**southco**

PROPRIETARY ITEM - EXCEPT FOR USES EXPRESSLY GRANTED IN WRITING INFORMATION DISCLOSED HEREON IS CONFIDENTIAL AND ALL RIGHTS PATENT AND OTHERWISE ARE RESERVED BY SOUTHCO, INC.

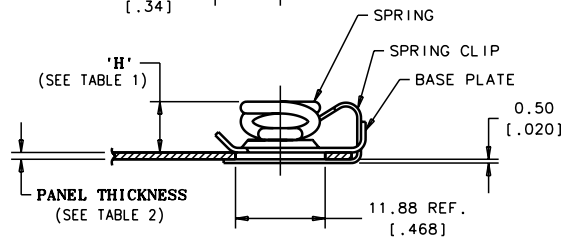
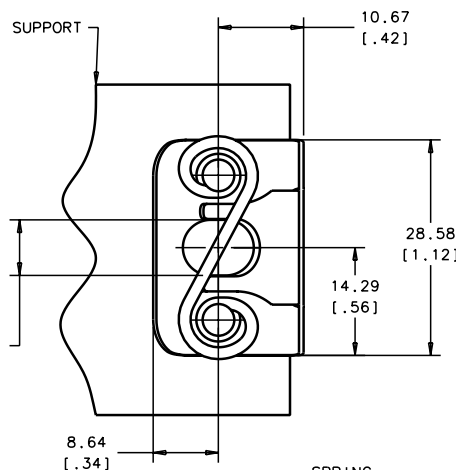
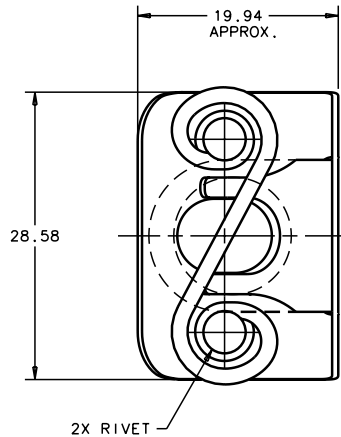
SLIP-ON SPRING PLATE ASSEMBLY  
SL4 SERIES

DATE: 12DEC2007  
DRAWN: CW  
CHKD: MJS  
SCALE: 2:1

DRAWING NUMBER: J-D4-SL4

REV	DATE	DRAWN/CHKD	DESCRIPTION	PART NUMBER	MATERIAL	FINISH			
			INITIAL DRAWING RELEASE	SEE TABLE 1					

**MILLIMETERS**  
ALL DIMENSIONS WITHOUT TOLERANCES ARE FOR REFERENCE ONLY.  
THIRD ANGLE PROJECTION  
A3 PAPER SIZE



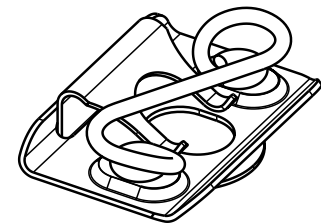
**PANEL PREPARATION**  
(SCALE: 1.5:1)

**TABLE 1**

ITEM	QTY	PART NO.	MATERIAL	FINISH	'H'		'H'+0.020 INCHES	'H'+0.51 METRIC
					INCHES	METRIC		
ASSEMBLY	--	D4-SL4-280	--	--				
BASE PLATE	1	--	CARBON STEEL					
SPRING CLIP	1	--	CARBON SPRING STEEL	ZINC PLATE BRIGHT CHROMATE	0.260	6.60	0.280	7.11
SPRING	1	--	HIGH TENSILE STEEL					
RIVET	2	--	--	--				
ASSEMBLY	--	D4-SL4-305	--	--				
BASE PLATE	1	--	CARBON STEEL					
SPRING CLIP	1	--	CARBON SPRING STEEL	ZINC PLATE BRIGHT CHROMATE	0.285	7.24	0.305	7.75
SPRING	1	--	HIGH TENSILE STEEL					
RIVET	2	--	--	--				
ASSEMBLY	--	D4-SL4-330	--	--				
BASE PLATE	1	--	CARBON STEEL					
SPRING CLIP	1	--	CARBON SPRING STEEL	ZINC PLATE BRIGHT CHROMATE	0.310	7.87	0.330	8.38
SPRING	1	--	HIGH TENSILE STEEL					
RIVET	2	--	--	--				

**TABLE 2**

PART NO.	PANEL THICKNESS			
	MINIMUM		MAXIMUM	
	INCHES	MM	INCHES	MM
D4-SL4-XXX	0.036	0.91	0.128	3.25



**ISOMETRIC VIEW**