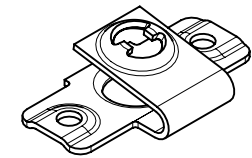
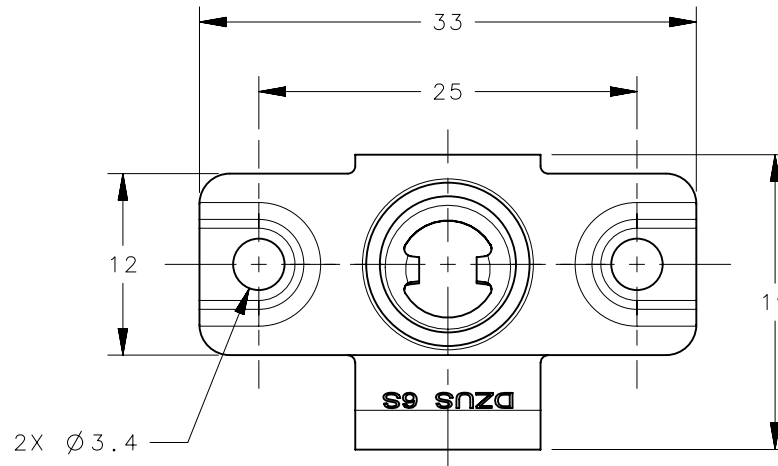
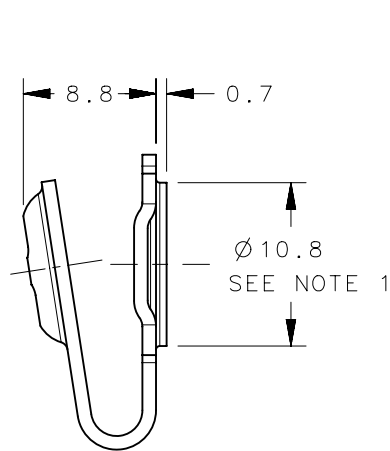


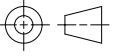
REVISION HISTORY			
REV	DATE	BY	DESCRIPTION
B	29AUG2016	CMS/JW	PRN: P2016-1937



SCALE 1 : 1

NOTES:

1. SUPPORT PANEL REQUIRES Ø 11.00 HOLE.
2. FINISH: DRY LUBRICANT COATING FOR STAINLESS STEEL D8, PASSIVATION PLUS CLEAR COAT ON STAINLESS STEEL, METALLIC WITH A SLIGHT YELLOW TINGE, NITRIC ACID PASSIVATION FOLLOWED BY TRIPASS ELV 2000 (MACDERMID) AS PER ASTM B633, FOLLOWED BY JS 500 TOPCOAT (MACDERMID) AS PER ASTM 695, RoHS COMPLIANT. AS PER ASTM B117. SYNTHETIC GEAR OIL 75W-90 COMPLYING WITH NATIONAL/REGIONAL CHEMICAL INVENTORY REQUIREMENTS DSL, IECSC, TSCA.
3. MATERIAL: 17-7ph STAINLESS STEEL AS PER ASTM A693 WITH SOLUTION HEAT TREAT AND PRECIPITATION HARDEN 17/7 PH ST/STL TO HARDNESS 400-450 HV PER RH 950.

D8-336-400-200	RECEPTACLE	SEE NOTE 3	HARDENED	SEE NOTE 2
PART NUMBER	TYPE OF COMPONENT	MATERIAL	HEAT TREAT	FINISH
CAGE CODE	THIRD ANGLE PROJECTION	 southco [®] CONNECT • CREATE • INNOVATE		
U1584	MILLIMETERS [IN]			
	TOLERANCES UNLESS OTHERWISE NOTED			
	ALL DIMENSIONS WITHOUT TOLERANCES ARE FOR REFERENCE ONLY.			
PROPRIETARY ITEM	PER ASME Y14.5M-1994	SIZE	SYSTEM	DWG NO.
EXCEPT FOR USES EXPRESSLY GRANTED IN WRITING, INFORMATION DISCLOSED HEREON IS CONFIDENTIAL AND ALL RIGHTS, PATENT AND OTHERWISE, ARE RESERVED BY SOUTHCO, INC.		A4	NX	J-D8-336-400-200-T
		DRAWN BY	DATE	SCALE
		CMS/JW	25APR2016	2 : 1
				SHEET 1 OF 1