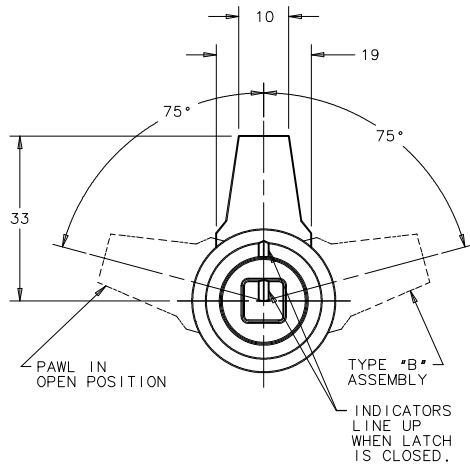


NOTES:

- A. OPERATION: 195° TURN OF KEY CAUSES SHAFT TO ROTATE 75° THEN PULL UP 6.4.
- B. NUTS AND LOCKWASHERS SHIPPED UNASSEMBLED IN BAG WITH LATCH ASSEMBLY
- C. INSTALLATION:
 1. INSERT LATCH INTO HOLE IN DOOR. CHECK FOR PROPER ORIENTATION AND OPERATION WITH PAWL.
 2. PLACE THE MOUNTING LOCKWASHER AND NUT (27 ACROSS FLATS) ONTO THE HOUSING. THE MAXIMUM RECOMMENDED TIGHTENING TORQUE IS 28 Nm.
 3. PLACE THE JAM NUTS (17 ACROSS FLATS), LOCKWASHERS AND PAWL ONTO THE SHAFT. WITH LATCH IN THE CLOSED POSITION, ADJUST JAM NUTS TO POSITION THE PAWL AT THE CORRECT GRIP. THE MAXIMUM RECOMMENDED TIGHTENING TORQUE IS 20 Nm.
 4. CAUTION: ADJUST PAWL SO THAT NO MORE THAN 7.9 Nm TORQUE ON DRIVER IS REQUIRED TO CLOSE LATCH.
- D. OPERATED BY EUROPEAN STANDARD RAILWAY KEY.
- E. FOR GASKETED APPLICATIONS USE SOUTHCO GASKET PART NUMBER E5-17, ORDER SEPARATELY.

FINISH TABLE

PART NUMBER	FINISH
E3-111-X1	- BRIGHT CHROME PLATING
E3-111-X5	- BLACK POWDER COATING
E3-111-X7	- SATIN SILVER POLYESTER POWDER COAT



PROPRIETARY ITEM - EXCEPT FOR USES EXPRESSLY GRANTED IN WRITING INFORMATION DISCLOSED HEREON IS CONFIDENTIAL AND ALL RIGHTS PATENT AND OTHERWISE ARE RESERVED BY SOUTHCO, INC.

WISE-ACTION LATCH-INTERNATIONAL SERIES 8mm RAILWAY DRIVER

DATE	DRAWN	CHKD	SCALE	DRAWING NUMBER
31JUL95	DAZ		1:1	J-E3-111

REV	DATE	DRAWN/CHKD	DESCRIPTION	ITEM	PART NUMBER	GRIP RANGE	PAWL OFF-SET
A	11OCT96	SWD	PRN: S-93-23	LATCH ASSEMBLY	E3-111-1X	11.4-27.2	NONE
B	11MAY98	JGK	PRN: E3-689	LATCH ASSEMBLY	E3-111-2X	25.4-41.1	13.7
C	22JUN99	SCK/JSS	PRN: E3-806	LATCH ASSEMBLY	E3-111-3X	38.9-54.6	27.4
D	28APR2003	RLR/AJH	PRN: P2003-0112				
E	01MAY2007	BWR/RLR	PRN: P2007-0587				
F	03DEC2013	CMS/MGG	PRN: P2013-2338				
G	29JUN2015	CMS/MGG	PRN: P2015-1259				

MILLIMETERS

ALL DIMENSIONS WITHOUT TOLERANCES ARE FOR REFERENCE ONLY.



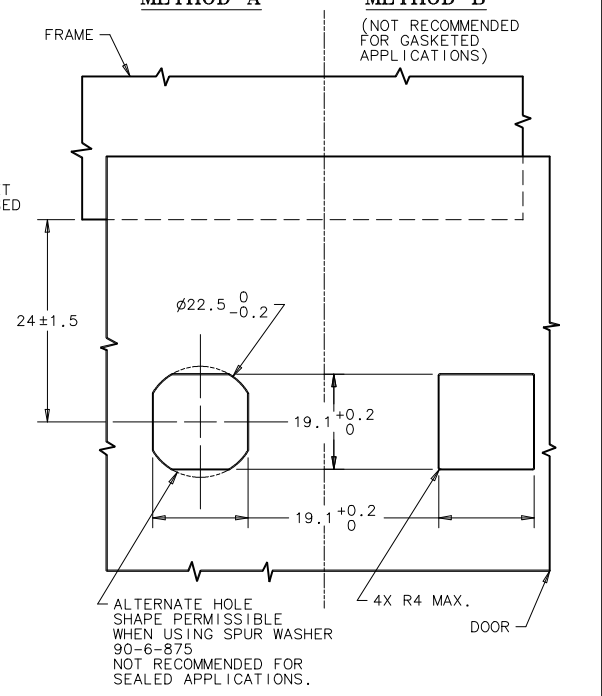
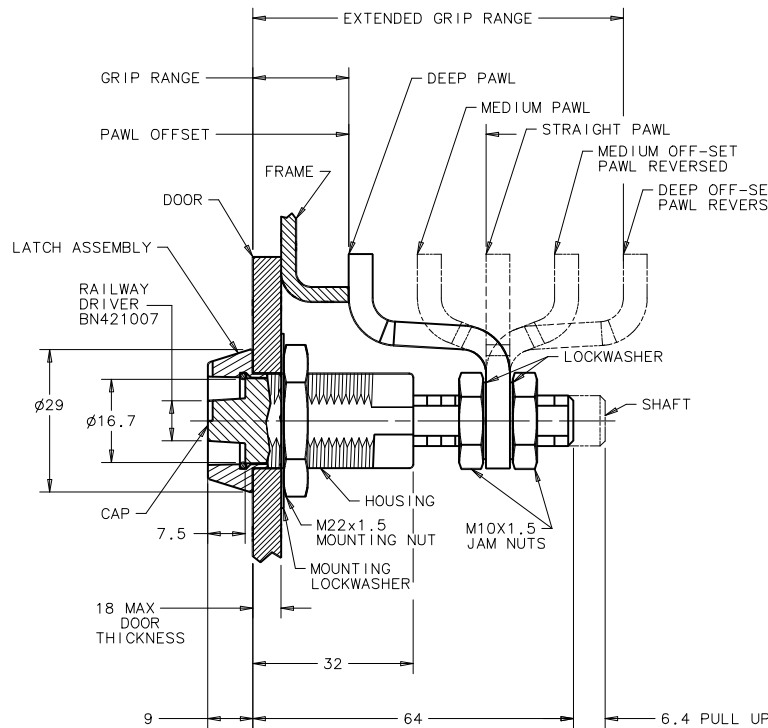
THE ABOVE PART NUMBERS ARE TYPE *A*(TURN CLOCKWISE TO LATCH) FOR TYPE *B* ASSEMBLIES(TURN COUNTERCLOCKWISE TO LATCH), CHANGE THE THIRD DIGIT OF THE PART NUMBER FROM 1 TO 22 EXAMPLE: E3-2211-15

COMPONENT	MATERIAL	FINISH
HOUSING	DIE CAST ZINC	SEE FINISH TABLE
CAP	DIE CAST ZINC	SEE FINISH TABLE
RETAINER	302 STAINLESS STEEL	BLACK OXIDE OR NATURAL
SPRING	302 STAINLESS STEEL	NATURAL
O-RING	BUNA-N	NATURAL
SLEEVE	1075 STEEL	ZINC IMMERSION COATING †
CAM	1075 STEEL	ZINC IMMERSION COATING †
SHAFT	LOW CARBON STEEL	ZINC ALLOY PLATE BRIGHT CHROMATE, PLUS SEALER
PIN	1008 STEEL	ZINC PLATE PLUS CHROMATE DIP, YELLOW
PAWL	1010 STEEL	ZINC ALLOY PLATE BRIGHT CHROMATE, PLUS SEALER
JAM NUTS (2)	LOW CARBON STEEL	ZINC ALLOY PLATE BRIGHT CHROMATE, PLUS SEALER
LOCKWASHERS (2)	SPRING STEEL	ZINC ALLOY PLATE BRIGHT CHROMATE, PLUS SEALER
MOUNTING NUT	DIE CAST ZINC	ZINC PLATE, BRIGHT CHROMATE
MOUNTING LOCKWASHER	SPRING STEEL	ZINC ALLOY PLATE BRIGHT CHROMATE, PLUS SEALER

DOOR PREPARATION

METHOD A

METHOD B



† TM - METAL COATINGS INTERNATIONAL, INC.