

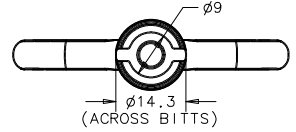
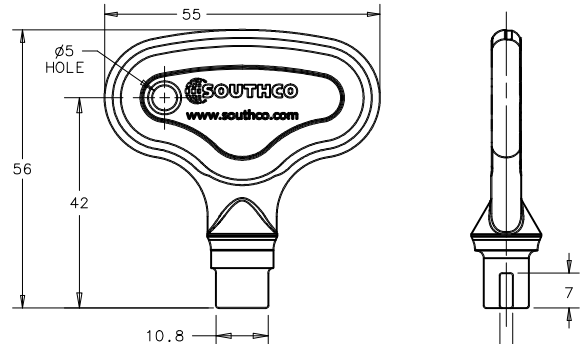
NOTES:

- A. OPERATION: 195° TURN OF KEY CAUSES PAWL TO ROTATE 75° THEN PULL UP 6.4.
- B. PAWL, NUTS, AND LOCKWASHERS SHIPPED UNASSEMBLED IN BAG WITH LATCH ASSEMBLY.
- C. INSTALLATION:
 1. INSERT LATCH INTO HOLE IN DOOR. CHECK FOR PROPER ORIENTATION AND OPERATION OF PAWL.
 2. INSTALL USING LOCKWASHER AND MOUNTING NUT (27mm ACROSS FLATS). MAX. TIGHTENING TORQUE 28 Nm.
 3. INSTALL JAM NUT, LOCKWASHER, PAWL, LOCKWASHER, AND JAM NUT ON SHAFT. ADJUST JAM NUTS TO POSITION PAWL AT CORRECT GRIP (WITH LATCH CLOSED). TIGHTEN JAM NUTS (20 Nm MAX. TORQUE) USING TWO 17mm WRENCHES.
 4. CAUTION: ADJUST PAWL SO THAT NO MORE THAN 7.9 Nm TORQUE ON KEY IS REQUIRED TO CLOSE LATCH.

X FINISH TABLE

- 1 - BRIGHT CHROME PLATE
- 4 - CARDINAL WHITE POWDER COAT
- 5 - BLACK POWDER COAT
- 6 - LIGHT GREY POWDER COAT
- 7 - SATIN SILVER POLYESTER POWDER COAT
- 8 - SILVER METALLIC URETHANE POWDER COAT

southco		PROPRIETARY ITEM - EXCEPT FOR USES EXPRESSLY GRANTED IN WRITING INFORMATION DISCLOSED HEREON IS CONFIDENTIAL AND ALL RIGHTS PATENT AND OTHERWISE ARE RESERVED BY SOUTHCO, INC.		VISE-ACTION LATCH 5MM DOUBLE BITTED DRIVER		DATE	DRAWN/CHKD	SCALE	DRAWING NUMBER
						27SEP2011	MJS	1:1	J-E3-148
REV	DATE	DRAWN/CHKD	DESCRIPTION	ITEM	PART NUMBER	GRIP RANGE	EXTENDED GRIP RANGE	PAWL OFF-SET	MILL METERS
A	27SEP2011	MJS/MGG	INITIAL RELEASE	LATCH ASSEMBLY	E3-148-1X	11.4-27.2	66.3-76.2	27.4	
B	29JAN2015	CMS/MWD	PRN: P2015-0226	LATCH ASSEMBLY	E3-148-2X	25.4-41.1	52.6-68.3	13.7	
				LATCH ASSEMBLY	E3-148-3X	38.9-54.6	NONE	NONE	



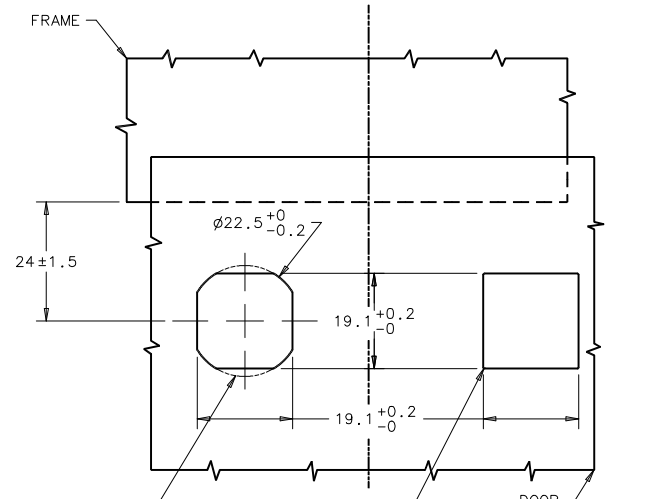
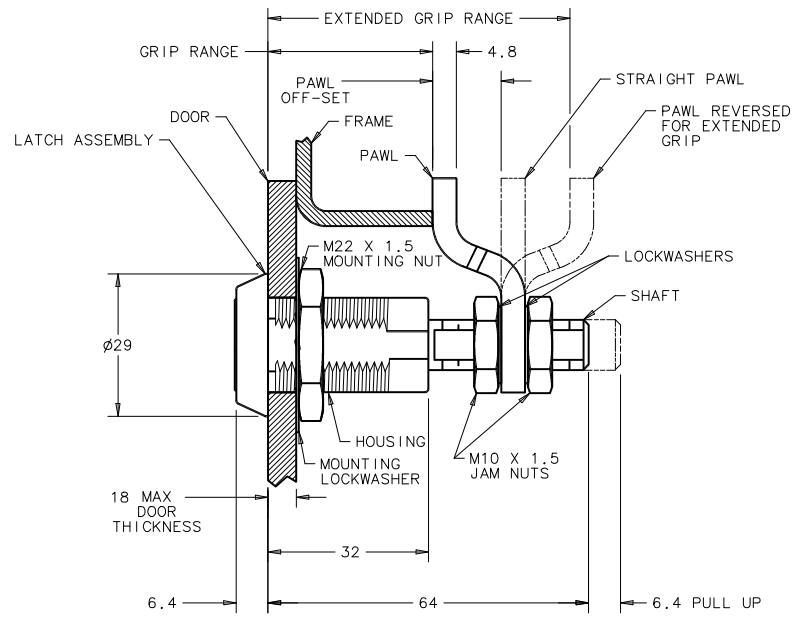
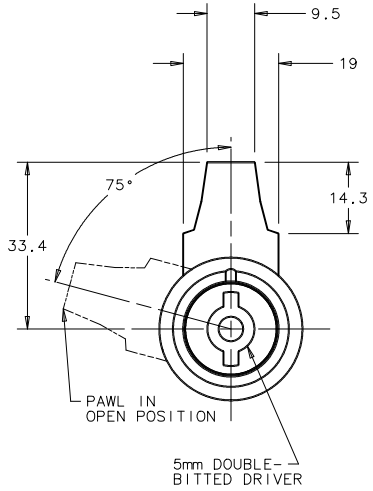
KEY
PART NUMBER E3-9-1
5mm DOUBLE-BITTED STUD TOOL (ORDER SEPARATELY)
DIE CAST ZINC, BRIGHT NICKEL PLATE

COMPONENT	MATERIAL	FINISH
HOUSING	DIE CAST ZINC	SEE FINISH TABLE
CAP	DIE CAST ZINC	SEE FINISH TABLE
RETAINER	302 STAINLESS STEEL	NATURAL
SPRING	302 STAINLESS STEEL	NATURAL
O-RING	BUNA-N	NATURAL
SLEEVE	1075 STEEL	ZINC IMMERSION COATING †
CAM	1075 STEEL	ZINC IMMERSION COATING †
SHAFT	LOW CARBON STEEL	ZINC PLATE CHROMATE, PLUS SEALER
PIN	1008 STEEL	ZINC PLATE PLUS CHROMATE DIP, YELLOW
PAWL	1010 STEEL	ZINC PLATE CHROMATE, PLUS SEALER
JAM NUTS (2)	LOW CARBON STEEL	ZINC PLATE CHROMATE, PLUS SEALER
LOCKWASHERS (2)	SPRING STEEL	ZINC PLATE CHROMATE, PLUS SEALER
MOUNTING NUT	DIE CAST ZINC	ZINC PLATE, BRIGHT CHROMATE
MOUNTING LOCKWASHER	SPRING STEEL	ZINC PLATE CHROMATE, PLUS SEALER

THE ABOVE PART NUMBERS ARE TYPE "A" (TURN CLOCKWISE TO LATCH) FOR TYPE "B" ASSEMBLIES (TURN COUNTERCLOCKWISE TO LATCH), CHANGE THE THIRD DIGIT OF THE PART NUMBER FROM 1 TO 22.
EXAMPLE: E3-2248-15

DOOR PREPARATION

- METHOD A**
- METHOD B**
(NOT RECOMMENDED FOR GASKETED APPLICATIONS)



ALTERNATE HOLE SHAPE PERMISSIBLE WHEN USING SPUR WASHER 90-6-875
NOT RECOMMENDED FOR SEALED APPLICATIONS.
† TM - METAL COATINGS INTERNATIONAL, INC.