

ASSEMBLY PART NUMBER

E3 - RH - GF

R = ROTATION
H = HEAD STYLE
G = GRIP
F = FINISH

R = ROTATION

5 - TYPE A, CLOCKWISE TO LATCH
24 - TYPE B, COUNTER-CLOCKWISE TO LATCH

F = FINISH

1 - CHROME PLATED
5 - BLACK POWDER COATED
7 - SILVER POWDER COATED

REVISION HISTORY

REV	DATE	BY	DESCRIPTION
F	23JAN2019	RSK/CMS	PRN: P2019-0193

PAWL IN OPEN POSITION. RIGHT HAND OPERATION SHOWN.

KNOB STYLE

80°

Ø 21

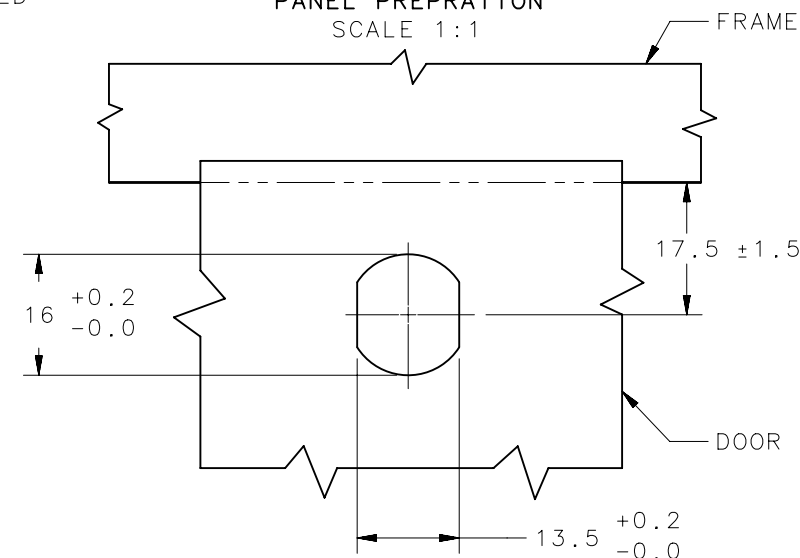
23

INDICATOR MARKS ON RIM ALIGN WITH KNOB, WHEN PAWL IS IN FULLY LATCHED POSITION.

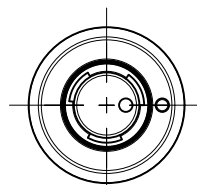
G = GRIP

GRIP	MINIMUM	MAXIMUM
0	NO CAM	
1	3.2	6.4
2	6.4	9.5
3	9.5	12.7
4	12.7	15.9
5	15.9	19
6	19	22.2
7	22.2	25.4
8	25.4	28.6

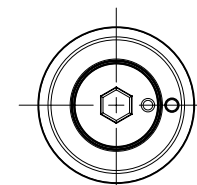
PANEL PREPARATION
SCALE 1:1



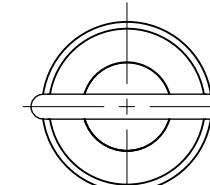
H = HEAD STYLE
SCALE 1:1



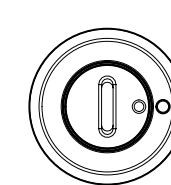
5 - SOUTHCO TUBULAR KEY (USE SOUTHCO KEY E3-26-819-15)



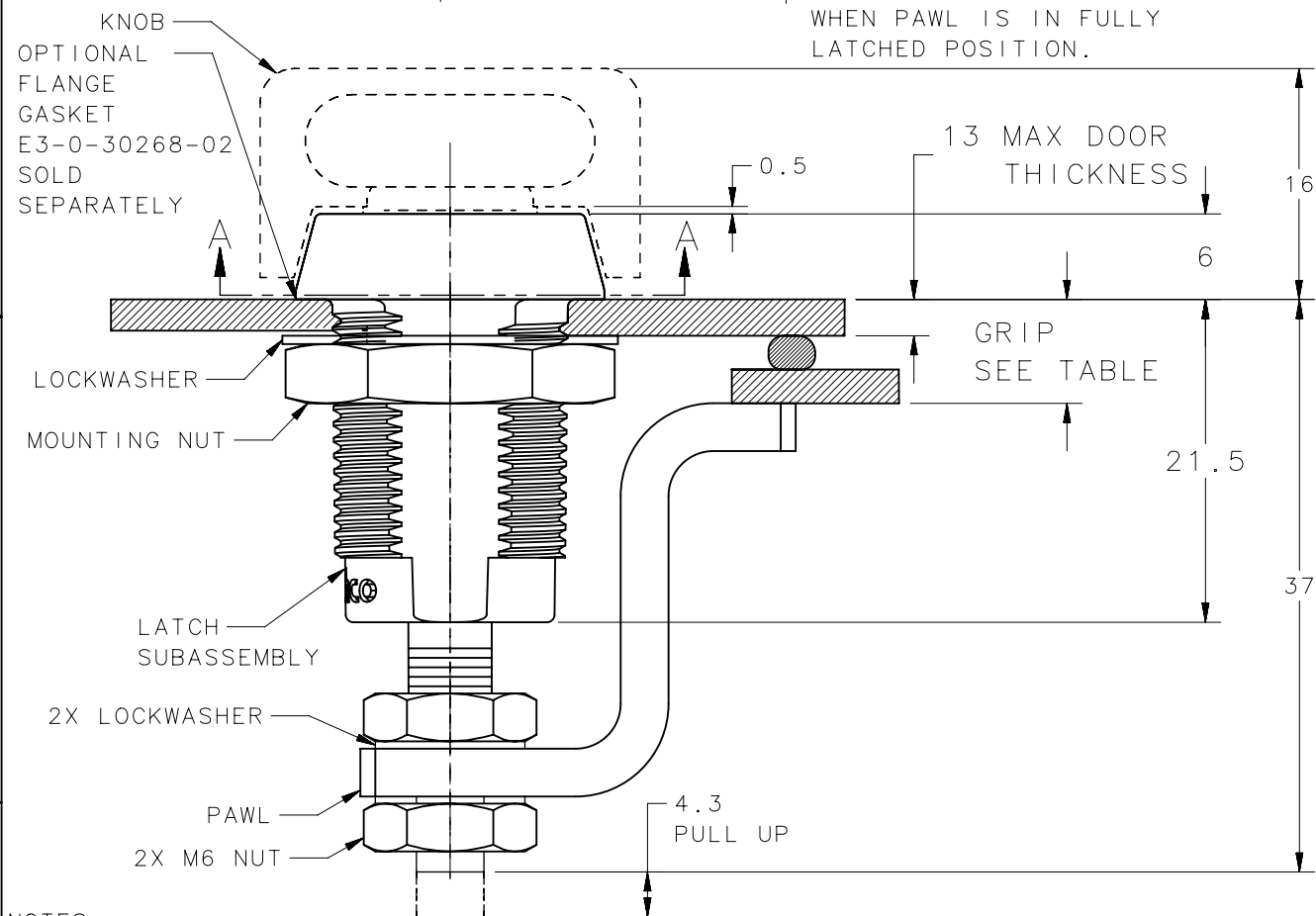
6 - 4mm HEX RECESS



7 - KNOB



9 - 1.5mm SLOTTED RECESS



NOTES:

- PAWL, NUTS AND LOCKWASHERS ARE SHIPPED UNASSEMBLED IN BAG WITH LATCH SUB-ASSEMBLY.
- INSTALLATION:
SECURE LATCH ASSEMBLY IN DOOR WITH LARGE LOCKWASHER AND MOUNTING NUT (19 ACROSS FLATS) AND TIGHTEN TO 13 N-m MAX. PLACE PAWL, NUTS AND (2X) LOCKWASHERS ON SHAFT AND ADJUST TO REQUIRED GRIP IN LATCHED POSITION. TIGHTEN NUTS 5 N-m MAX USING TWO 10mm WRENCHES.
- CAUTION: SET PAWL POSITION SO THAT NO MORE THAN 1.6 Nm OF TORQUE IS REQUIRED TO SECURE THE DOOR.
- OPERATION: 195° TURN OF DRIVER OR KNOB CAUSES PAWL TO ROTATE AND THEN PULL UP AS SHOWN.
- MATERIAL AND FINISH:
A. HOUSING- DIE CAST ZINC, SEE FINISH
B. CAP- DIE CAST ZINC (WHEN H=6,7,OR 9), SEE FINISH
STAINLESS STEEL, PASSIVATED (WHEN H=5)
- WHEN FINISH IS POWDER COATED (F=5 OR 7), ONLY SURFACES ABOVE A-A ARE COVERED.

NO.	PART NUMBER	QTY	TYPE OF COMPONENT	MATERIAL	FINISH
14	-	1	MOUNTING NUT	STEEL	ZINC PLATE + CHROMATE/SEALER
13	-	1	LOCKWASHER	STEEL	ZINC PLATE + CHROMATE/SEALER
12	-	2	PAWL LOCKWASHER	STEEL	ZINC PLATE + CHROMATE/SEALER
11	-	2	PAWL NUT	STEEL	ZINC PLATE + CHROMATE/SEALER
10	-	1	PAWL	STEEL	ZINC PLATE + CHROMATE/SEALER
9	-	1	PIN	STEEL	ZINC PLATE
8	-	1	O-RING	BUNA N RUBBER	-
7	-	1	RETAINER	STAINLESS STEEL	PASSIVATED
6	-	1	SLEEVE	STEEL	ZINC IMMERSION COATING
5	-	1	SPRING	STAINLESS STEEL	PASSIVATED
4	-	1	SHAFT	STEEL	ZINC PLATE + CHROMATE/SEALER
3	-	1	CAP	SEE NOTE 5.B	SEE NOTE 5.B
2	-	1	CAM	STEEL	ZINC IMMERSION COATING
1	-	1	HOUSING	SEE NOTE 5.A	SEE NOTE 5.A
-	E3-RH-GF	-	E3 VISE ACTION LATCH ASSEMBLY	-	-

THIRD ANGLE PROJECTION

INCHES [MM]

SURFACE AREA
VOLUME
PROPRIETARY ITEM
EXCEPT FOR USES EXPRESSLY GRANTED IN WRITING, INFORMATION DISCLOSED HEREON IS CONFIDENTIAL AND ALL RIGHTS, PATENT AND OTHERWISE, ARE RESERVED BY SOUTHCO, INC.

TOLERANCES UNLESS OTHERWISE NOTED
ALL DIMENSIONS WITHOUT TOLERANCES ARE FOR REFERENCE ONLY.
PER ASME Y14.5M-1994

southco
CONNECT • CREATE • INNOVATE

DESCRIPTION: E3 SMALL SIZE VISE ACTION™ LATCHES, ZINC

SIZE: B SYSTEM: NX DWG NO.: J-E3-55-1

DRAWN BY: CMS/KH DATE: 06OCT2017 SCALE: 2:1 SHEET: 1 OF 1