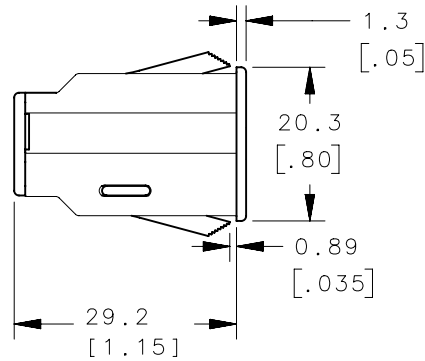
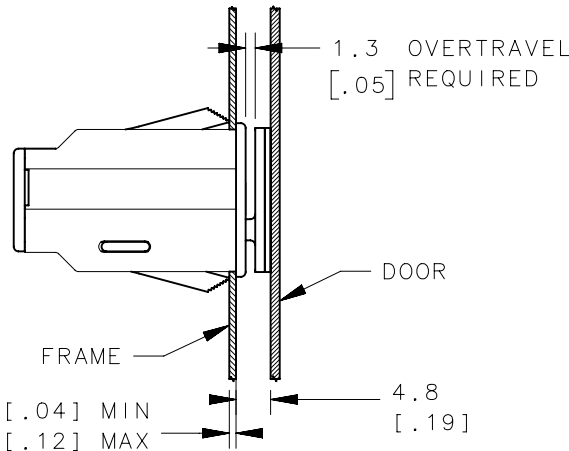
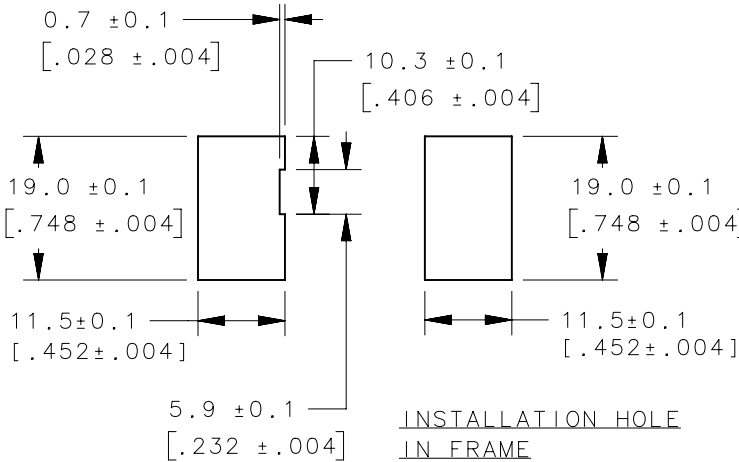
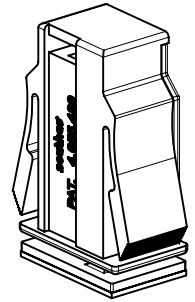
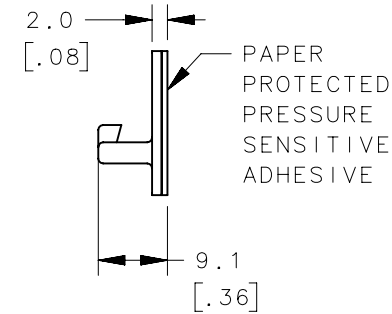
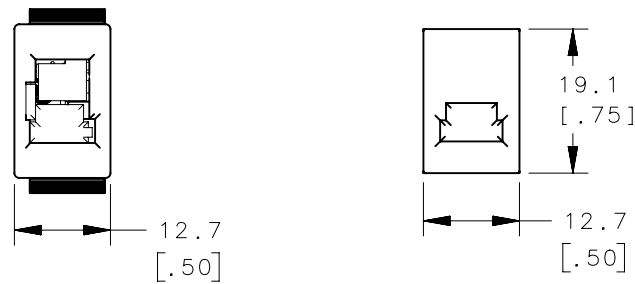


REVISION HISTORY			
REV	DATE	BY	DESCRIPTION
H	25JUL2013	JAJ/YGC	PRN: P2013-1521

**LATCH ASSEMBLY**  
(AVAILABLE INDIVIDUALLY)



**KEEPER ASSEMBLY**  
(AVAILABLE INDIVIDUALLY)



NOTES:

1. ASSEMBLY CONSISTS OF ONE PRE-ASSEMBLED LATCH AND KEEPER
2. TO INSTALL  
SNAP ASSEMBLY INTO INSTALLATION HOLE  
REMOVE PROTECTIVE PAPER FROM ADHESIVE  
CLOSE DOOR FIRMLY IN CONTACT WITH  
KEEPER.
3. MATERIAL AND FINISH  
THERMOPLASTIC COMPONENTS: BLACK ACETAL  
OR THERMOPLASTIC POLYESTER.  
INTERNAL COMPRESSION SPRING: TYPE 302  
S/S NATURAL.

ALTERNATE PANEL  
PREP FOR "ONE WAY"  
INSTALLATION

NO.	PART NUMBER	QTY	TYPE OF COMPONENT	MATERIAL & FINISH
3	E4-30-201-10	1	KEEPER ASSEMBLY	SEE NOTE 3
2	E4-20-201-10	1	LATCH ASSEMBLY	
1	E4-10-201-10	1	ASSEMBLY	

THIRD ANGLE PROJECTION		 CONNECT • CREATE • INNOVATE	
MILLIMETERS [IN]			
TOLERANCES UNLESS OTHERWISE NOTED		DESCRIPTION E4 TOUCH LATCH	
ALL DIMENSIONS WITHOUT TOLERANCES ARE FOR REFERENCE ONLY.		SIZE A4	SYSTEM NX
PROPRIETARY ITEM <small>EXCEPT FOR USES EXPRESSLY GRANTED IN WRITING, INFORMATION DISCLOSED HEREON IS CONFIDENTIAL AND ALL RIGHTS, PATENT AND OTHERWISE, ARE RESERVED BY SOUTHCO, INC.</small>		DWG NO. J-E4-10-201-10	
PER ASME Y14.5M-1994		DRAWN BY RHB	DATE 14AUG1984
		SCALE 1:1	SHEET 1 OF 1