

REV	DATE	DRAWN/CHKD	DESCRIPTION	PART NUMBER
H	15FEB2003	DLH/AJH	PRN: P2002-0887	47-90-6X1-YZ
I	03SEP2003	AAB/CHW	PRN: P2003-0769	47-91-6X1-YZ
J	26OCT2005	AAB/RLR	PRN: P2005-1523	47-92-6X1-YZ
K	23MAY2006	MJS/RLR	PRN: P2006-0726	47-93-6X1-YZ

SCREW PROJECTION	PANEL THICKNESS	
	P-1	P-2
0.5	7.1	0.9
2.1	8.7	
3.7	10.3	
5.3	11.9	

**MILLIMETERS**

ALL DIMENSIONS WITHOUT TOLERANCES ARE FOR REFERENCE ONLY.

A3 PAPER SIZE

NOTES:  
 A. MATERIAL AND FINISH:  
 - KNOB: 6000 SERIES ALUMINUM  
 - SCREW: 400 SERIES STAINLESS STEEL, PASSIVATED; OR HARDENED CARBON STEEL, ZINC PLATE, CHROMATE PLUS SEALER (SEE "Z" TABLE) (NOTE: KNOB AND TOP OF SCREW AVAILABLE WITH POWDER COATING; SEE "Y" TABLE)  
 - FERRULE: HARDENED CARBON STEEL; ZINC PLATE, CHROMATE PLUS SEALER  
 - SPRING: 300 SERIES STAINLESS STEEL, PASSIVATED  
 B. RoHS COMPLIANT.

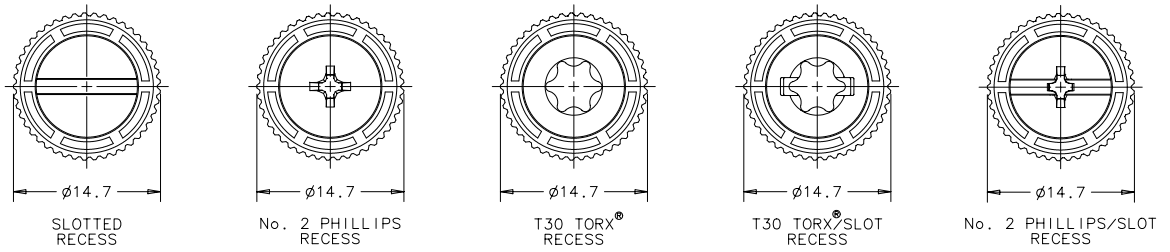
"Z" KNOB TYPE AND SCREW MATERIAL

- "X" SCREW RECESS**
- 0 - SLOTTED
  - 2 - No. 2 PHILLIPS
  - 4 - T30 TORX®
  - 6 - T30 TORX®/SLOT COMBINATION
  - 8 - No. 2 PHILLIPS/SLOT COMBINATION

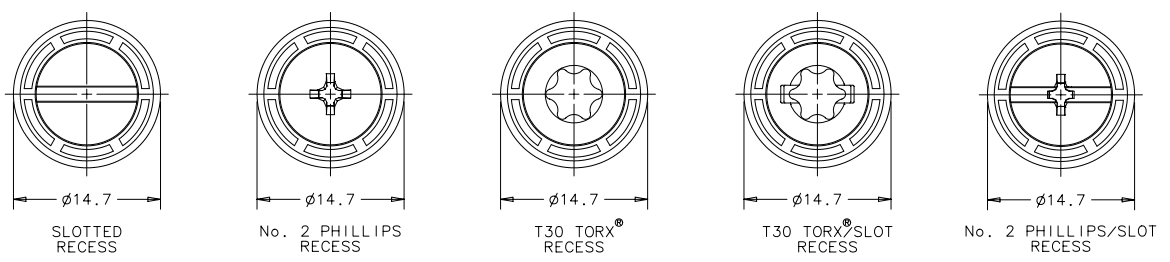
- "Y" FINISH ON KNOB & SCREW HEAD**
- 2 - BRIGHT
  - 4 - CUSTOM COLOR. SEE J-47-0-3 FOR ADDITIONAL SUFFIX
  - 6 - BLACK POWDER COATED

KNOB	SCREW MATERIAL	RECESS	
		SLOTTED PHILLIPS	TORX® TORX®/SLOT PHILLIPS/SLOT
KNURLED	STAINLESS STEEL	0	N/A
SMOOTH	STAINLESS STEEL	1	N/A
KNURLED	STEEL	4	0
SMOOTH	STEEL	5	1

### KNURLED KNOBS



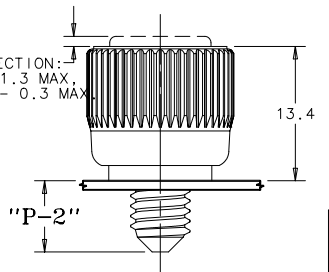
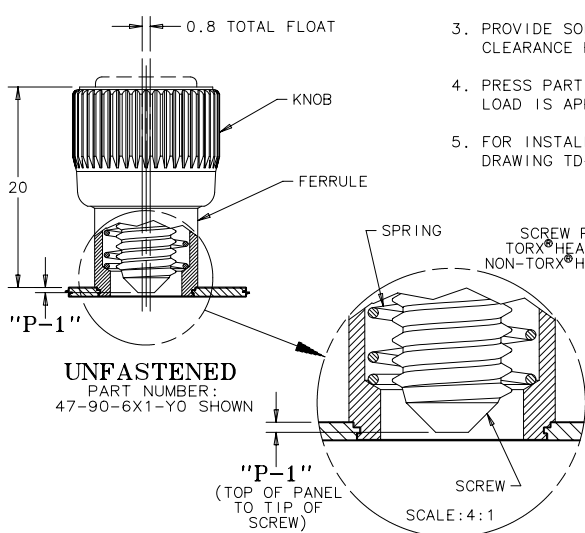
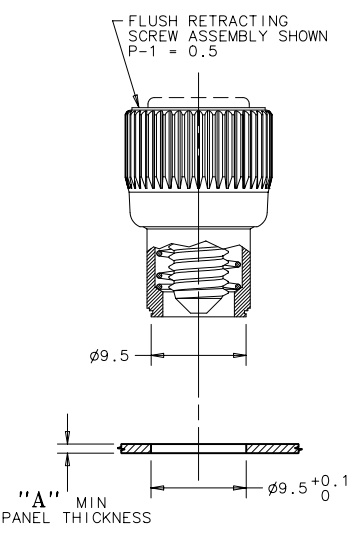
### SMOOTH KNOBS



NOTE: KNOB AND SCREW ARE SPRING LOADED OUTWARD, AS SHOWN BELOW

#### TO INSTALL FASTENER:

1. DRILL OR PUNCH HOLE AS SHOWN BELOW.
2. PLACE FERRULE INTO INSTALLATION HOLE.
3. PROVIDE SOLID BACK-UP BEHIND HOLE WITH CLEARANCE HOLE  $\phi 6.2^{+0.2}_{-0.1}$  FOR SCREW.
4. PRESS PART INTO PANEL UNTIL RECOMMENDED LOAD IS APPLIED.
5. FOR INSTALLATION FORCE GUIDELINES SEE DRAWING TD-47-8-J.



**PANEL PREPARATION**  
 PART NUMBER:  
 47-90-6X1-YO SHOWN

**FASTENED**  
 PART NUMBER:  
 47-90-6X1-YO SHOWN