

southco®

PROPRIETARY ITEM - EXCEPT FOR USES EXPRESSLY GRANTED IN WRITING INFORMATION DISCLOSED HEREON IS CONFIDENTIAL AND ALL RIGHTS PATENT AND OTHERWISE ARE RESERVED BY SOUTHCO, INC.

No. 56 SPRING LOADED PLUNGER ASSEMBLY, PRESS-IN STYLE, WITHOUT STAY OPEN FEATURE

DATE	DRAWN	CHKD	SCALE
14JUN2002	VNI	LL	2:1

DRAWING NUMBER
J-56-60-15

REV	DATE	DRAWN/CHKD	DESCRIPTION	ITEM	PART NUMBER	MATERIAL	FINISH
A	29JAN2003	RLR/CHW	PRN: P2003-0066	ASSEMBLY	56-60-15	-	-
B	24JUN2003	AJH/MJS	PRN: P2003-0532	STUD	-	LOW CARBON STEEL, CASE HARDENED	ZINC PLATE PLUS SEALER
C	22JUL2003	DLH/AJH	PRN: P2003-0621	END CAP	-	LOW CARBON STEEL	ZINC PLATE PLUS SEALER
D	04DEC2017	CMS/JL	PRN: P2017-2970	FERRULE	-	LOW CARBON STEEL, CASE HARDENED	ZINC PLATE PLUS SEALER
				SPRING	-	300 SERIES STAINLESS STEEL	PASSIVATED

INCHES

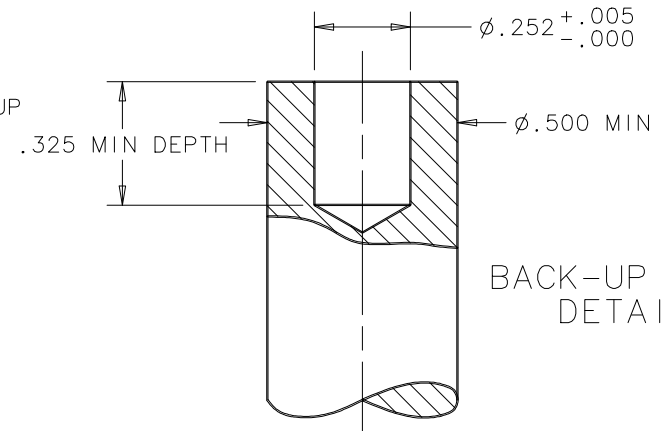
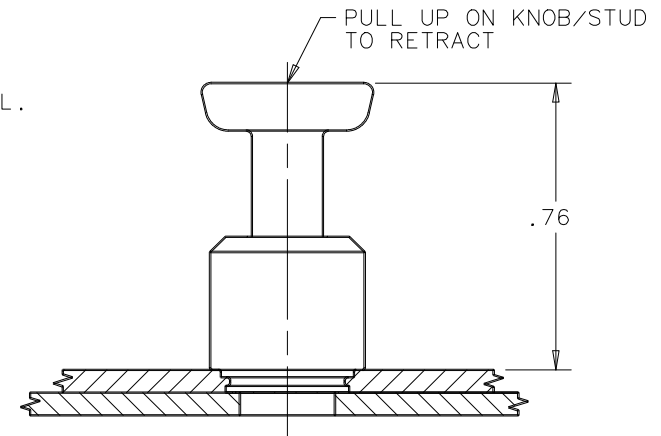
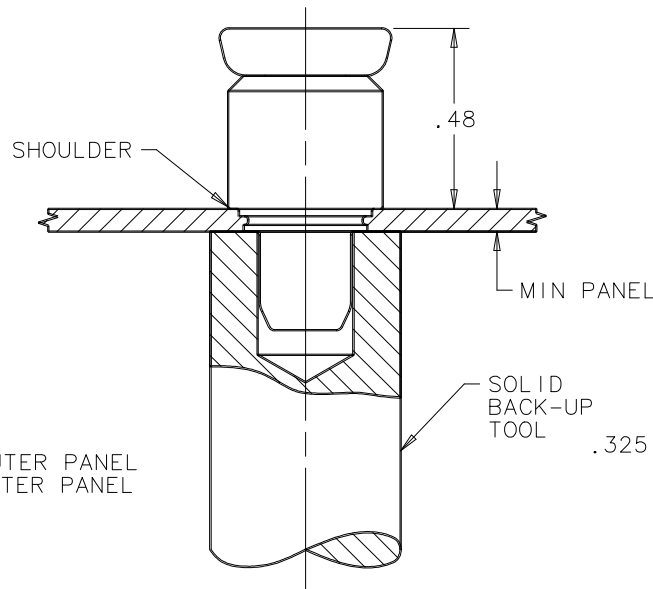
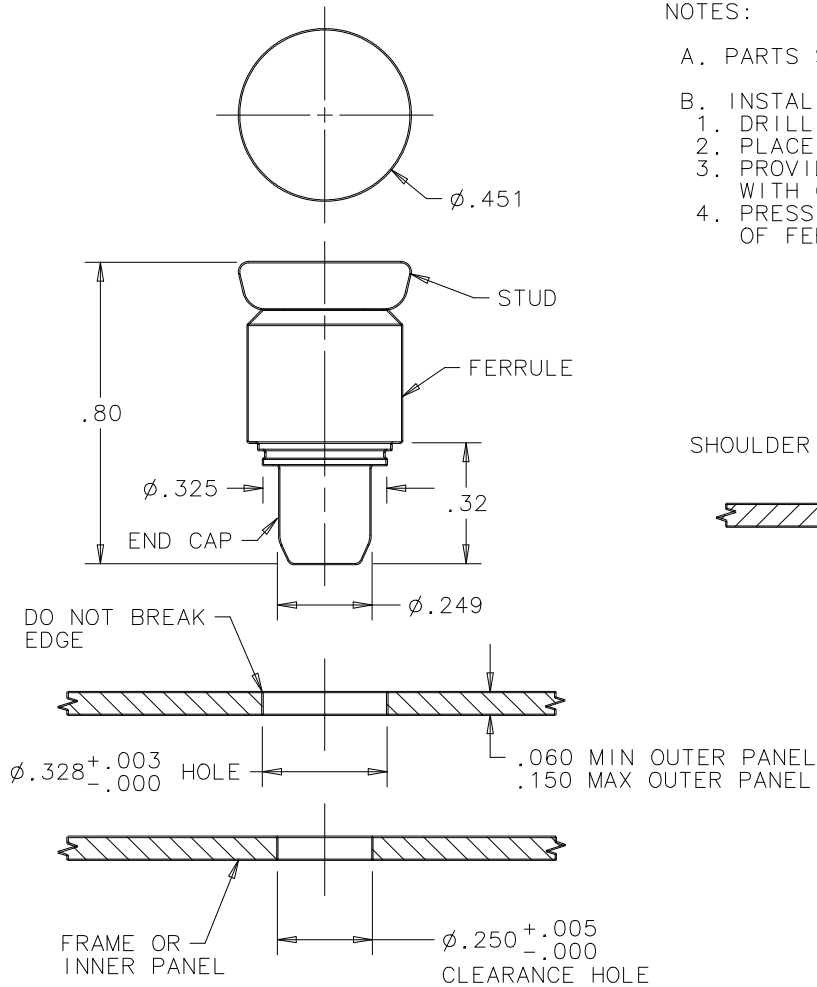
ALL DIMENSIONS WITHOUT TOLERANCES ARE FOR REFERENCE ONLY.

THIRD ANGLE PROJECTION

A PAPER SIZE

NOTES:

- A. PARTS SHIPPED BULK.
- B. INSTALLATION INSTRUCTIONS:
 1. DRILL OR PUNCH $\phi .328^{+.003}/-.000$ HOLE.
 2. PLACE FERRULE INTO INSTALLATION HOLE.
 3. PROVIDE SOLID BACK-UP BEHIND HOLE WITH CLEARANCE HOLE FOR STUD.
 4. PRESS ON HEAD OF STUD UNTIL SHOULDER OF FERRULE IS FIRMLY AGAINST OUTER PANEL.



BACK-UP TOOL
DETAIL