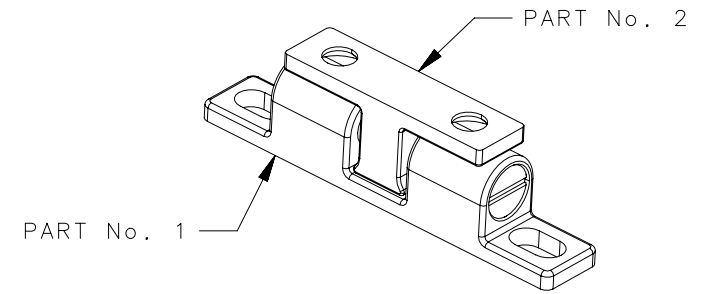
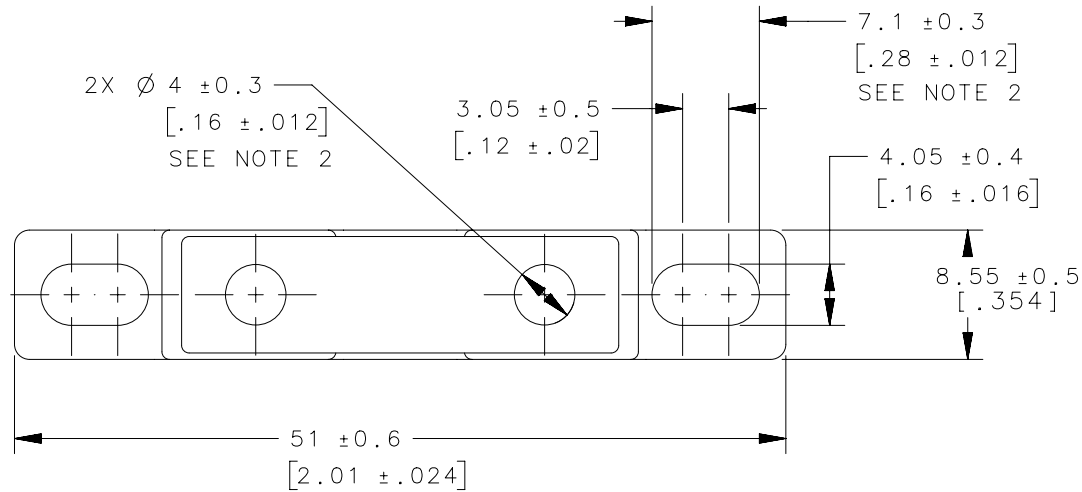
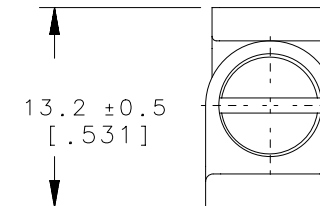
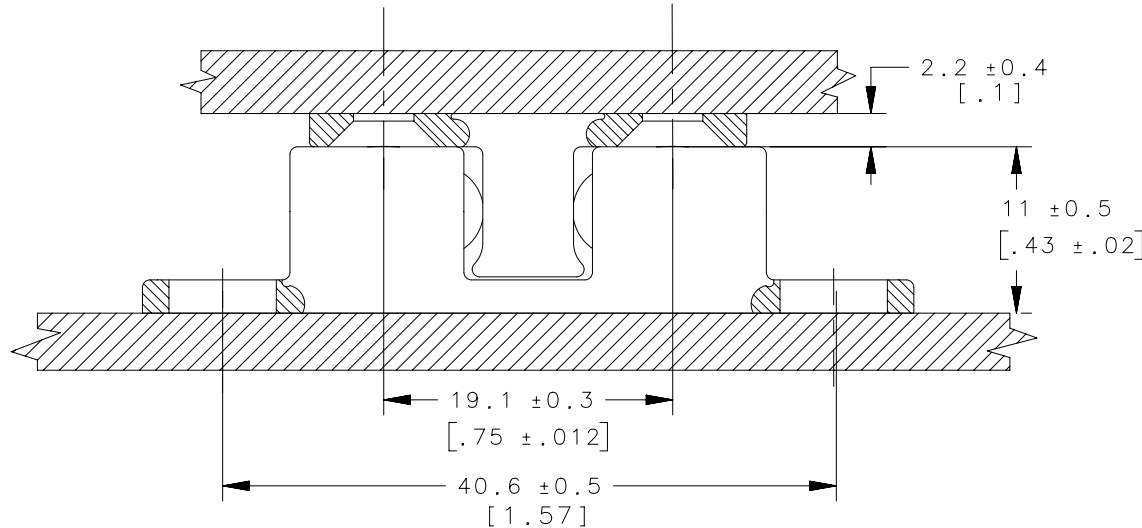


REVISION HISTORY			
REV	DATE	BY	DESCRIPTION
B	03APR2020	ZAA/CMS	PRN: P2019-1254



SCALE 6:5



NOTES:

1. MATERIAL AND FINISH :  
 BASE, STRIKER-CF-8M STAINLESS STEEL  
 (NOMINAL EQUIVALENT OF 316 STAINLESS STEEL),  
 ELECTROPOLISHED.

STEEL BALL, SPRING, SET SCREW-304 STAINLESS  
 STEEL, PASSIVATED.

2. PANEL PREPERATION :  
 PART NUMBER 1 - RECOMMENDED #6 PAN-HEAD  
 SELF-TAPPING SCREW.

PART NUMBER 2 - RECOMMENDED #6 COUNTERSUNK  
 SELF-TAPPING SCREW.

M5-10-271-8		ASSEMBLY		SEE NOTE 1		SEE NOTE 1	
PART NUMBER		TYPE OF COMPONENT		MATERIAL		FINISH	
CPB NUMBER	STANDARD	THIRD ANGLE PROJECTION		 CONNECT • CREATE • INNOVATE			
		MILLIMETERS [IN]					
SURFACE AREA		TOLERANCES UNLESS OTHERWISE NOTED		DESCRIPTION			
VOLUME		ALL DIMENSIONS WITHOUT TOLERANCES ARE FOR REFERENCE ONLY.		BALL CATCH			
PROPRIETARY ITEM		PER ASME Y14.5M-1994		SIZE	SYSTEM	DWG NO.	
EXCEPT FOR USES EXPRESSLY GRANTED IN WRITING, INFORMATION DISCLOSED HEREON IS CONFIDENTIAL AND ALL RIGHTS, PATENT AND OTHERWISE, ARE RESERVED BY SOUTHCO, INC.				A4	NX	J-M5-10-271	
				DRAWN BY	DATE	SCALE	SHEET
				VSV/VGV	08DEC2007	1:1	1 OF 1