

6

5

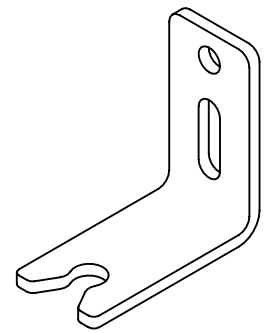
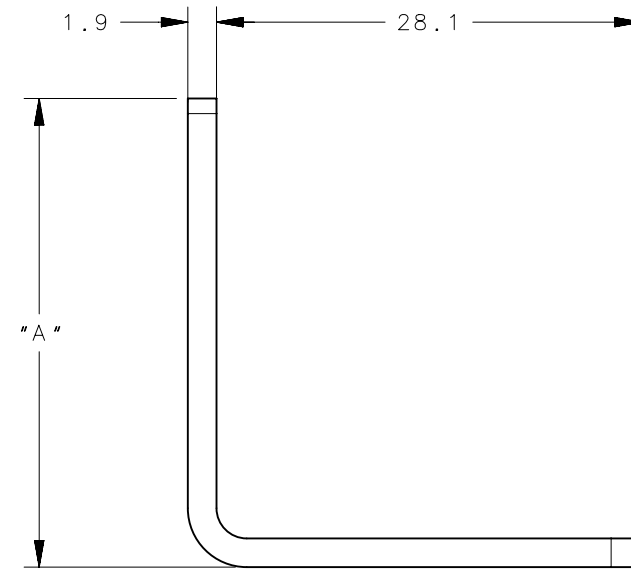
4

3

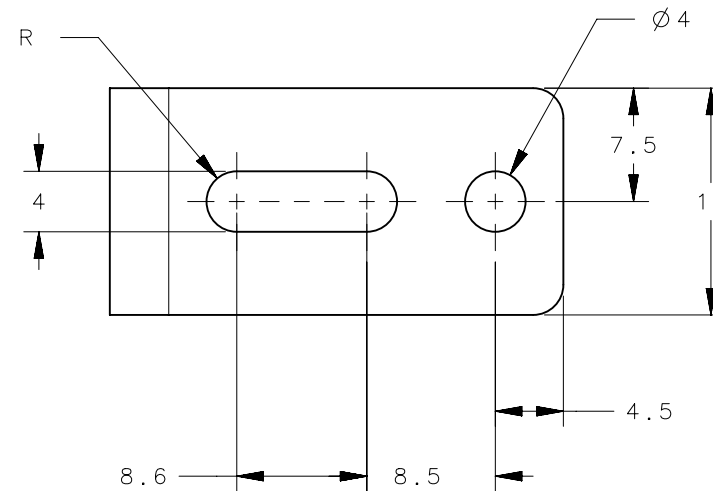
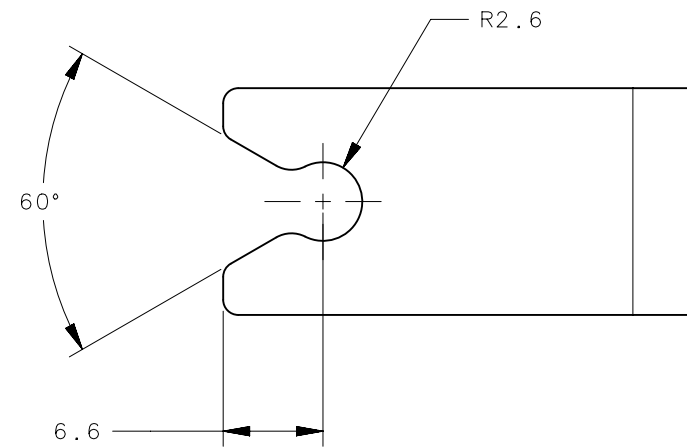
2

1

| REVISION HISTORY | | | |
|------------------|-------------|---------|-----------------|
| REV | DATE | BY | DESCRIPTION |
| D | 31 JAN 2019 | DKP/DMS | PRN: P2019-0266 |

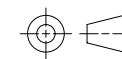


SCALE 1:1



| | | | | |
|---------------------|-------------------|-----------------|------------|---------|
| R4-0-50253-3 | RETAINER | STAINLESS STEEL | PASSIVATED | 19 |
| R4-0-50253-2 | RETAINER | STAINLESS STEEL | PASSIVATED | 28 |
| R4-0-50253-1 | RETAINER | STAINLESS STEEL | PASSIVATED | 31 |
| SOUTHCO PART NUMBER | TYPE OF COMPONENT | MATERIAL | FINISH | "A" DIM |

THIRD ANGLE PROJECTION



MILLIMETERS [IN]

TOLERANCES UNLESS OTHERWISE NOTED

ALL DIMENSIONS WITHOUT TOLERANCES ARE FOR REFERENCE ONLY.

PROPRIETARY ITEM
EXCEPT FOR USES EXPRESSLY GRANTED
IN WRITING, INFORMATION DISCLOSED
HEREON IS CONFIDENTIAL AND ALL
RIGHTS, PATENT AND OTHERWISE,
ARE RESERVED BY SOUTHCO, INC.

PER ASME Y14.5M-1994

southco[®]
CONNECT • CREATE • INNOVATE

RETAINER, CABLE

| | | | |
|-------------|-----------|--------|--------------|
| DESCRIPTION | SIZE | SYSTEM | DWG NO. |
| | B | NX | J-R4-0-50253 |
| DRAWN BY | DATE | SCALE | SHEET |
| ACH/DJK | 19NOV2012 | 2:1 | 1 OF 1 |

6

5

4

3

2

1