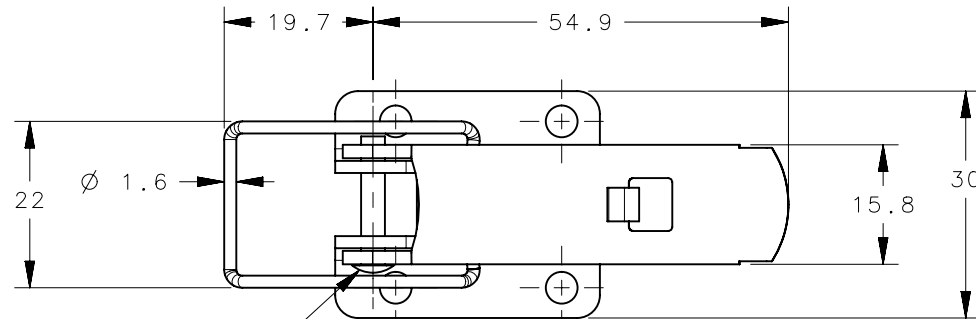
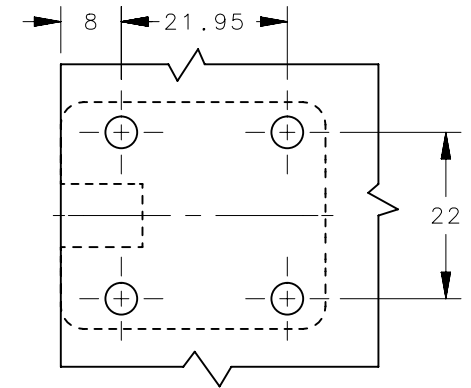
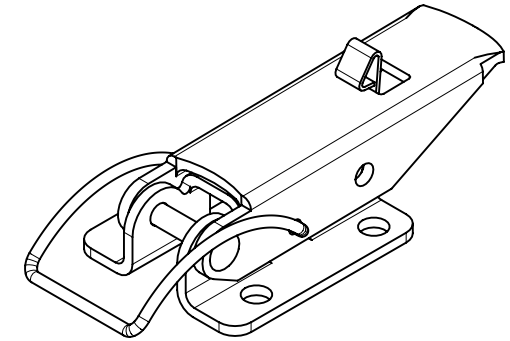
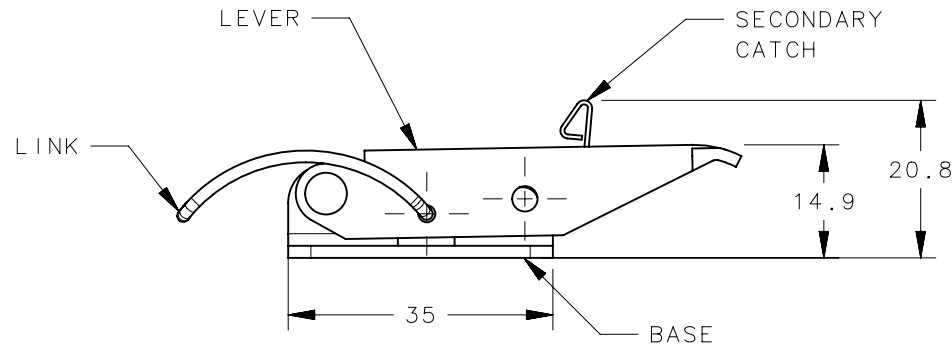


REVISION HISTORY			
REV	DATE	BY	DESCRIPTION
A	30JUN2010	ACH	PRN: P2010-1234



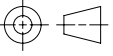

RIVET



PANEL PREPARATION

NOTE:

MATERIAL AND FINISHES REFERRED TO ON THIS DRAWING ARE FOR REFERENCE ONLY. SEE INDIVIDUAL COMPONENT DRAWINGS FOR FULL SPECIFICATION.

TL-40-113-52	-	-	-	-	-	STAINLESS STEEL / CLEAN
TL-40-113-24						STAINLESS STEEL ELECTROPOLISHED
TL-40-113-07	-	-	-	-	-	ZINC PLATE TRIVALENT PASSIVATE
OUTHCO PART NUMBER	LEVER	BASE	LINK	RIVET	SECONDARY CATCH	MATL/FINISH
	THIRD ANGLE PROJECTION 		 CONNECT • CREATE • INNOVATE			
	MILLIMETERS [IN]					
SURFACE AREA	XXXXXmm ²		DESCRIPTION			
VOLUME	XXXXXmm ³		TL - TOGGLE LATCH ASSEMBLY WITH SECONDARY CATCH			
PROPRIETARY ITEM	EXCEPT FOR USES EXPRESSLY GRANTED IN WRITING, INFORMATION DISCLOSED HEREON IS CONFIDENTIAL AND ALL RIGHTS, PATENT AND OTHERWISE, ARE RESERVED BY SOUTHCO, INC.		TOLERANCES UNLESS OTHERWISE NOTED		SIZE A4 SYSTEM NX DWG NO. J-TL-40-113	
			ALL DIMENSIONS WITHOUT TOLERANCES ARE FOR REFERENCE ONLY.		DRAWN BY ACH DATE 30JUN2010 SCALE 1:1 SHEET 1 OF 1	
	PER ASME Y14.5M-1994					