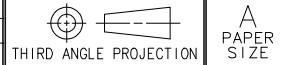
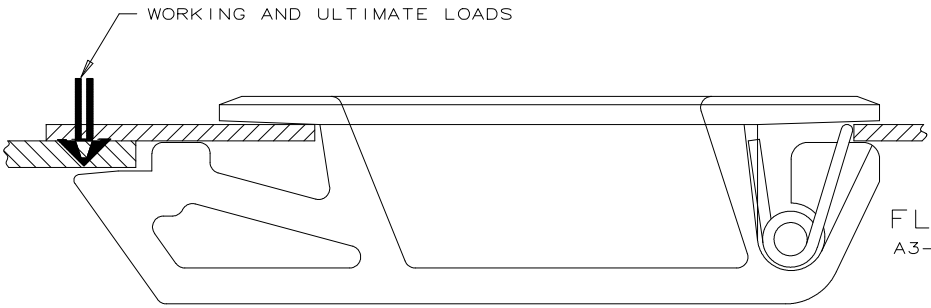


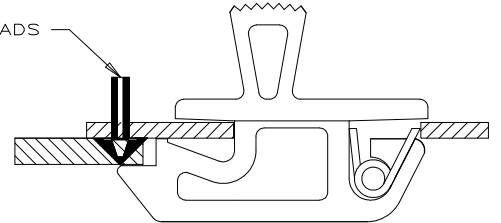
REV	DATE	DRAWN/CHKD	DESCRIPTION							
A	05OCT00	GDM	REVISED A3-10 DATA							
B	09APR2002	GDM	UPDATE FORMAT							



SOUTHCO PERFORMANCE GUIDELINES
 THE PERFORMANCE GUIDELINES SHOWN ON THIS PAGE ARE SUPPLIED AS A GENERAL GUIDE ONLY, AS CONDITIONS VARY WITH EACH APPLICATION AND METHOD OF INSTALLATION. STRENGTH DATA GIVEN IS FOR FAILURE OF THE PRODUCT OR FOR SUFFICIENT DEFORMATION TO MAKE PRODUCT INOPERABLE. NO SAFETY FACTOR HAS BEEN APPLIED IT IS RECOMMENDED THAT THE USER REQUEST A PRODUCT SAMPLE FOR TESTING TO DETERMINE THE SUITABILITY OF THE PRODUCT FOR THE PURPOSE INTENDED AND USER'S PARTICULAR APPLICATION.



FLUSH STYLE
A3-40 SERIES SHOWN



TAB STYLE
A3-20 SERIES SHOWN

LATCH SERIES	LATCH STYLE	MAXIMUM RECOMMENDED WORKING LOAD ①	AVERAGE ULTIMATE LOAD ②	CYCLE LIFE ③
A3-10 SERIES	TAB STYLE	25 N (5 LBS)	*145 N (30 LBS)	* 10,000
A3-20 SERIES		90 N (20 LBS)	155 N (35 LBS)	20,000
A3-30 SERIES		130 N (30 LBS)	310 N (70 LBS)	45,000
A3-40 SERIES	FLUSH STYLE	180 N (40 LBS)	580 N (130 LBS)	20,000
A3-50 SERIES		220 N (50 LBS)	580 N (130 LBS)	45,000
A3-99 SERIES				

- ① WORKING LOAD is the maximum force that the product will withstand without affecting the operation or appearance of the product.
- ② Average ULTIMATE LOAD causes failure of the product or sufficient deformation to make the product inoperable.
- ③ CYCLE LIFE is based on fatigue life of the torsion spring component.