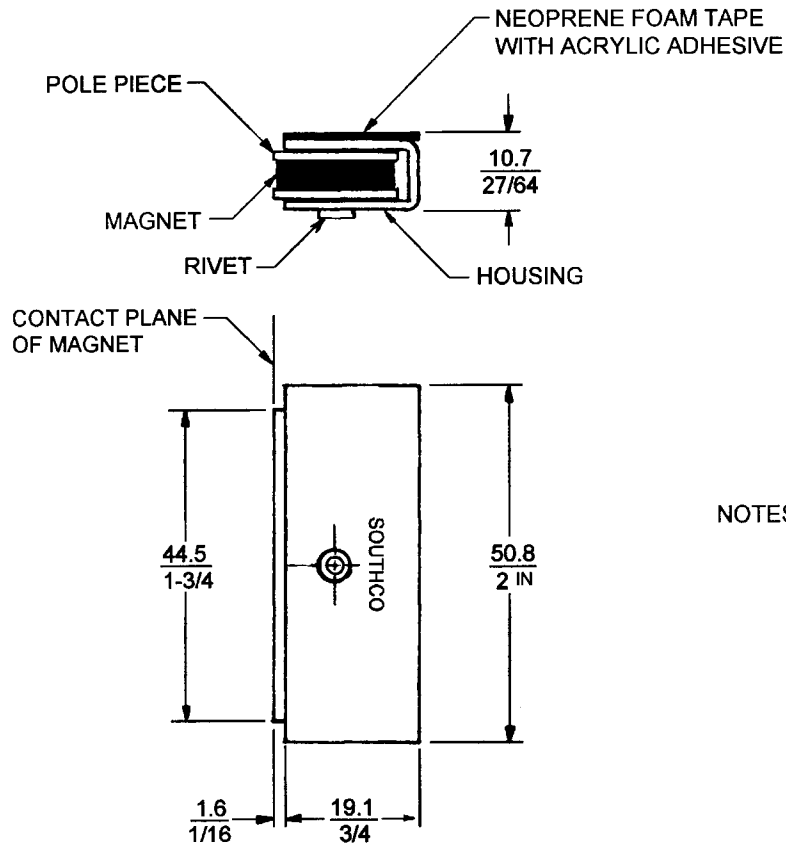




SOUTHCO NO. 02 MAGNETIC CATCH
ADHESIVE MOUNTING

DATE	DRAWN	CHKD	SCALE	DRAWING NUMBER
10-15-75	RHB		NTS	J-02-30-221-10

REV. LET.	DATE	BY-CHKD	REVISIONS	ITEM	PART NO.	MATERIAL	FINISH	R.S.	DATE	APP.
A	1-18-82	SK	PRN: S-1-01	ASSEMBLY	02-30-221-10			A	10-15-75	RHB
B	7-29-86	JSS	PRN: 02-52	HOUSING		3003-H14 ALUMINUM	NATURAL	B		
C	8-7-90	JAD	PRN: 02-63	POLE PIECE (2 REQD)		1010 STEEL	ZINC PLATE PER QQ-Z-325 TY. I, CL. 3	C		
D	5MAR93	JRB	PRN: S-1-03	MAGNET		BARIUM FERRITE	NATURAL	D	11/5/76	SJM
				RIVET		2024-H13 ALUMINUM	NATURAL			



TO INSTALL REMOVE PROTECTIVE PAPER AND
APPLY ASSEMBLY TO A CLEAN, DRY SURFACE

NOTES: MAGNETIC CATCHES IN GENERAL AND ADHESIVE MOUNTING
ASSEMBLIES IN PARTICULAR ARE DESIGNED TO FUNCTION
UNDER INTERMITTENT BREAK AWAY LOADS. DO NOT
SUBJECT ADHESIVE MOUNTING ASSEMBLIES TO A
CONTINUOUS LOAD.

DOOR AND FRAME SHOULD HAVE A BUILT-IN STOP TO
PREVENT EXCESSIVE LOADING OF THE ADHESIVE DUE
TO SLAMMING OF THE DOOR.

MILLIMETER / INCH MILLIMETER
INCH

PROPRIETARY ITEM - EXCEPT FOR USES EXPRESSLY GRANTED IN WRITING,
INFORMATION DISCLOSED HEREON IS CONFIDENTIAL AND ALL RIGHTS,
PATENT AND OTHERWISE, ARE RESERVED BY SOUTHCO, INC.

TOLERANCE UNLESS OTHERWISE NOTED
METRIC - MM - TWO PLACE (XX) ± ONE PLACE (X) ±
INCH DECIMALS ± FRACTIONS ± ANGLES ±

DRAWING NUMBER

J-02-30-221-10