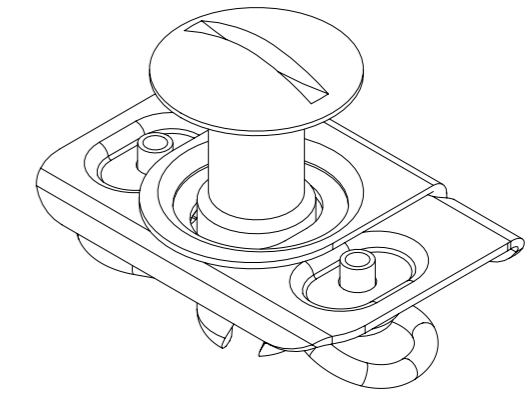
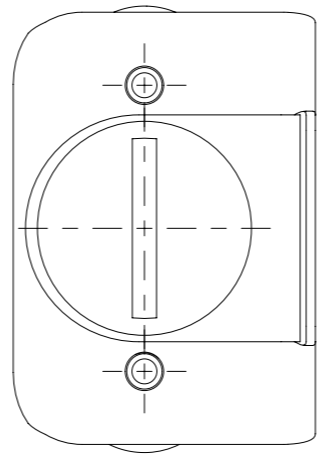


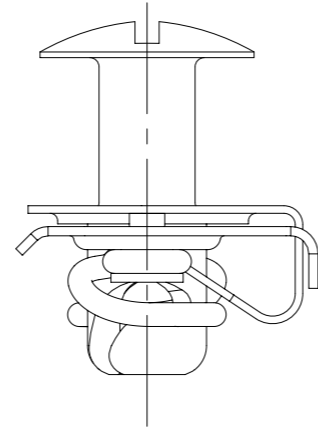
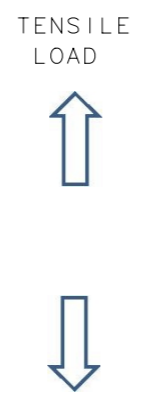
REVISION HISTORY			
REV	DATE	BY	DESCRIPTION
C	13AUG2015	DMS/YGC	PRN: P2015-1650

SOUTCO PERFORMANCE GUIDELINES

THE PERFORMANCE GUIDELINES SHOWN ON THIS PAGE ARE SUPPLIED AS A GENERAL GUIDE ONLY, AS CONDITIONS VARY WITH EACH APPLICATION AND METHOD OF INSTALLATION. STRENGTH DATA GIVEN IS FOR FAILURE OF THE PRODUCT OR FOR SUFFICIENT DEFORMATION TO MAKE PRODUCT INOPERABLE. NO SAFETY FACTOR HAS BEEN APPLIED IT IS RECOMMENDED THAT THE USER REQUEST A PRODUCT SAMPLE FOR TESTING TO DETERMINE THE SUITABILITY OF THE PRODUCT FOR THE PURPOSE INTENDED AND USER'S PARTICULAR APPLICATION.



SCALE 2:1



- NOTE:
- 1) AVERAGE ULTIMATE LOAD CAUSES FAILURE OF THE PRODUCT OR SUFFICIENT DEFORMATION TO MAKE THE PRODUCT INOPERABLE.
 - 2) AVERAGE ULTIMATE TORQUE CAUSES FAILURE OF THE PRODUCT OR SUFFICIENT DEFORMATION TO MAKE THE PRODUCT INOPERABLE.
 - 3) REF: trD4-7331

PARTS NUMBERS TESTED AS ASSEMBLY	AVERAGE ULTIMATE TORQUE	AVERAGE ULTIMATE TENSILE LOAD
		STEEL
D4-AJ5-70 (STUD)	5.46 Nm	2360 N
D4-SL4-280 (RECEPTACLE)		
	THIRD ANGLE PROJECTION	southco [®] CONNECT • CREATE • INNOVATE
	MILLIMETERS [IN]	
SURFACE AREA	TOLERANCES UNLESS OTHERWISE NOTED	
3519.05mm ²	UP TO 0.5	±0.05
VOLUME	OVER 0.5 UP TO 6	±0.1
1586.50mm ³	OVER 6 UP TO 30	±0.2
PROPRIETARY ITEM	OVER 30	±0.3
EXCEPT FOR USES EXPRESSLY GRANTED IN WRITING, INFORMATION DISCLOSED HEREON IS CONFIDENTIAL AND ALL RIGHTS, PATENT AND OTHERWISE, ARE RESERVED BY SOUTHCO, INC.	ANGLES	±1°
	PER ASME Y14.5M-1994	DESCRIPTION D4 STANDARD LINE SIZE #5 STUD WITH SLIP-ON-SPRING ASSEMBLY
	DRAWN BY MWC/YGC	SIZE SYSTEM DWG NO. A3 NX TD-D4-1
	DATE 11OCT2013	SCALE SHEET 2:1 1 OF 1