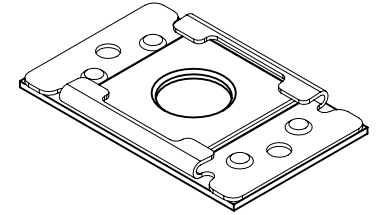
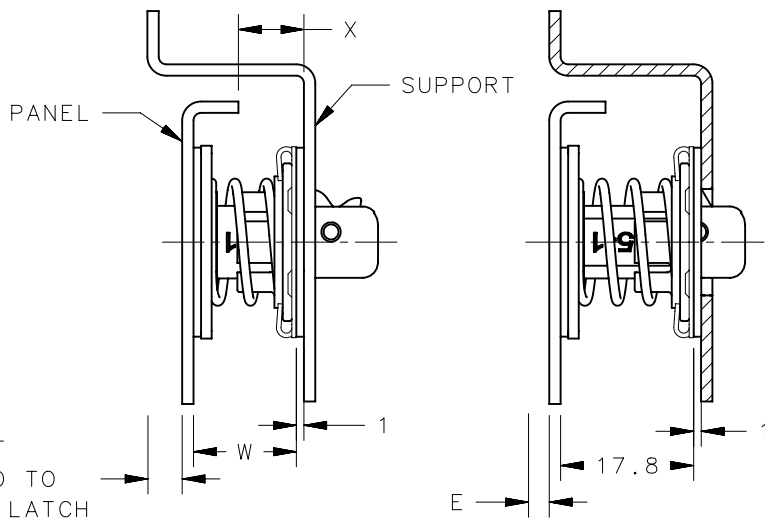


REVISION HISTORY			
REV	DATE	BY	DESCRIPTION
B	25DEC2014	DMS/YGC	PRN: P2014-2632



APPLICATION - WITH FLOATING RECEPTACLE



NOTES:

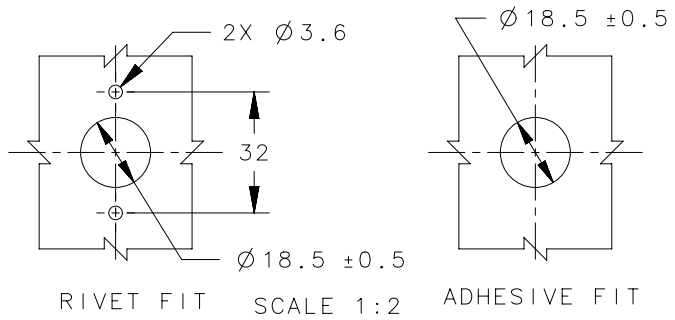
A. INSTALLATION PROCEDURE:

1. THE RECEPTACLE MAY BE RIVETED IN POSITION OR FIXED WITH AN ADHESIVE PATCH SUPPLIED SEPARATELY
2. FOR ADHESIVE FITTING, CHECK THE RECEPTACLE IS CLEAN, REMOVE ONE PAPER BACKING FROM THE ADHESIVE PATCH AND PRESS IT FIRMLY ONTO THE RECEPTACLE. DO NOT TOUCH THE ADHESIVE. MAKE SURE THAT THE CENTRAL RECEPTACLE HOLE IS NOT COVERED BY THE PATCH.
3. REMOVE THE SECOND PAPER, AND PRESS THE RECEPTACLE FIRMLY ONTO THE PRE-CLEANED SUPPORT. ENSURE THAT THE LARGE HOUSING HOLE IS ALIGNED WITH THE SUPPORT HOLE.
4. ENGAGE THE PINLATCH INTO THE RECEPTACLE AND CENTRALISE IT.
5. COMPLETE THE ASSEMBLY AS FOR THE STANDARD LATCH.

B. MATERIAL:

RECEPTACLE HOUSING AND PLATE - STAINLESS STEEL,
 AN ADHESIVE RETAINING PAD IS SUPPLIED SEPARATELY
 E = 4.5mm, THE DISTANCE THAT THE LATCH MAY EJECT WHEN RELEASED.
 W = 10.0mm MIN. WHEN THE LATCH IS FULLY COMPRESSED DURING
 OPERATION. ENSURE CLEARANCE REMAINS AT X AND Y.
 FLOAT = ±1.0mm MAX.

PANEL PREPARATION:



A4-26-502-10	RECEPTACLE	STAINLESS STEEL	ZINC PLATED
PART NUMBER	TYPE OF COMPONENT	MATERIAL	FINISH
	THIRD ANGLE PROJECTION		
	MILLIMETERS [IN]		
SURFACE AREA	TOLERANCES UNLESS OTHERWISE NOTED	DESCRIPTION A4 FLOATING RECEPTACLE	
VOLUME	ALL DIMENSIONS WITHOUT TOLERANCES ARE FOR REFERENCE ONLY.	SIZE A4	SYSTEM NX
PROPRIETARY ITEM		DWG NO. J-A4-26-502-10	
EXCEPT FOR USES EXPRESSLY GRANTED IN WRITING, INFORMATION DISCLOSED HEREON IS CONFIDENTIAL AND ALL RIGHTS, PATENT AND OTHERWISE, ARE RESERVED BY SOUTHCO, INC.	PER ASME Y14.5M-1994	DRAWN BY ACH/MJS	DATE 06JUL2009
		SCALE 1:1	SHEET 1 OF 1