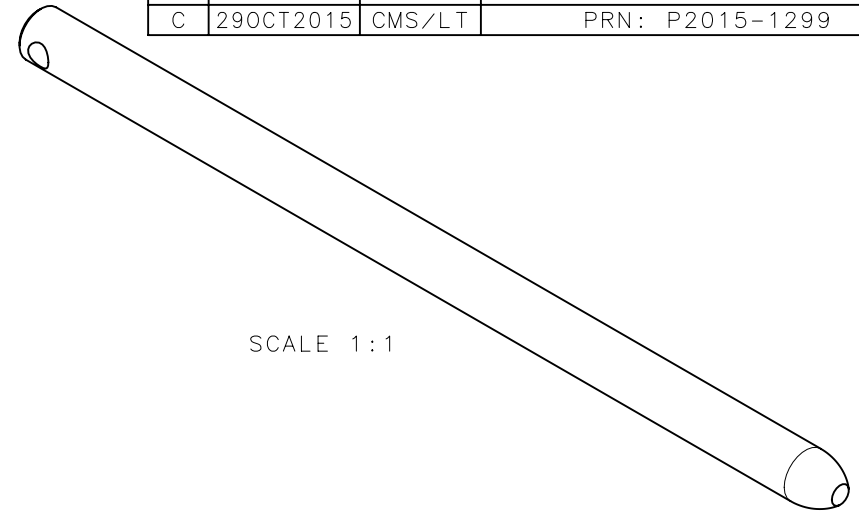
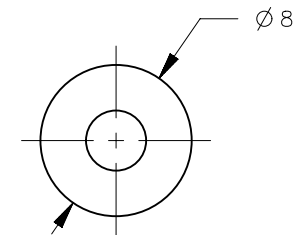
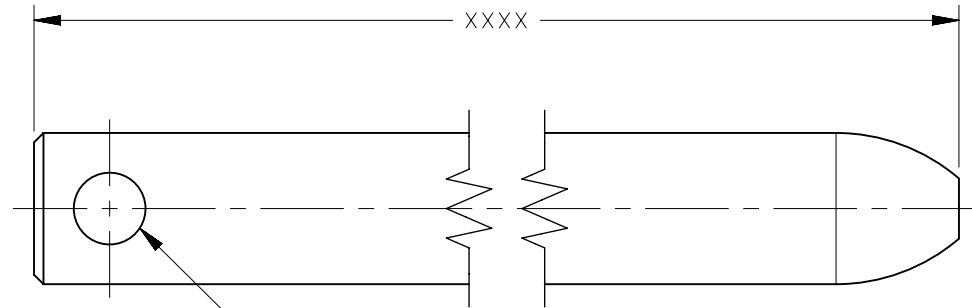


REVISION HISTORY			
REV	DATE	BY	DESCRIPTION
C	29OCT2015	CMS/LT	PRN: P2015-1299



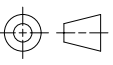

SCALE 1:1



HOLE FEATURE REQUIRED FOR MANUFACTURING PURPOSES.

NOTE:

A. ROD LENGTH IS DETERMINED BY PART NUMBER. LENGTH = MIN 100mm, MAX 1300mm. THE FOUR DIGIT GROUP IN THE PART NUMBER IS THE LENGTH OF THE ROD IN MILLIMETERS. (EXAMPLE: ROD PART NO. A5-55-0250-11 IS 250 MILLIMETERS LONG)

A5-55-XXXX-11		STEEL		ZINC PLATE, CHROMATE DIP	
PART NUMBER		MATERIAL		FINISH	
THIRD ANGLE PROJECTION 		 CONNECT • CREATE • INNOVATE			
MILLIMETERS [IN]					
TOLERANCES UNLESS OTHERWISE NOTED		DESCRIPTION ROD			
ALL DIMENSIONS WITHOUT TOLERANCES ARE FOR REFERENCE ONLY.		SIZE A4	SYSTEM NX	DWG NO. J-A5-55-11	
<small>PROPRIETARY ITEM EXCEPT FOR USES EXPRESSLY GRANTED IN WRITING, INFORMATION DISCLOSED HEREON IS CONFIDENTIAL AND ALL RIGHTS, PATENT AND OTHERWISE, ARE RESERVED BY SOUTHCO, INC.</small>		DRAWN BY RLR/MJS	DATE 16FEB2006	SCALE 2.5:1	SHEET 1 OF 1
PER ASME Y14.5M-1994					