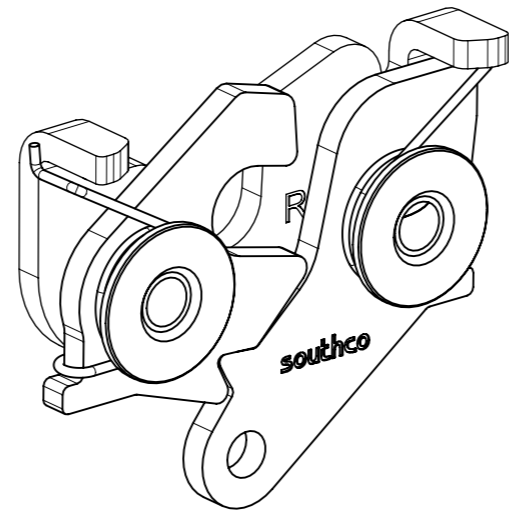
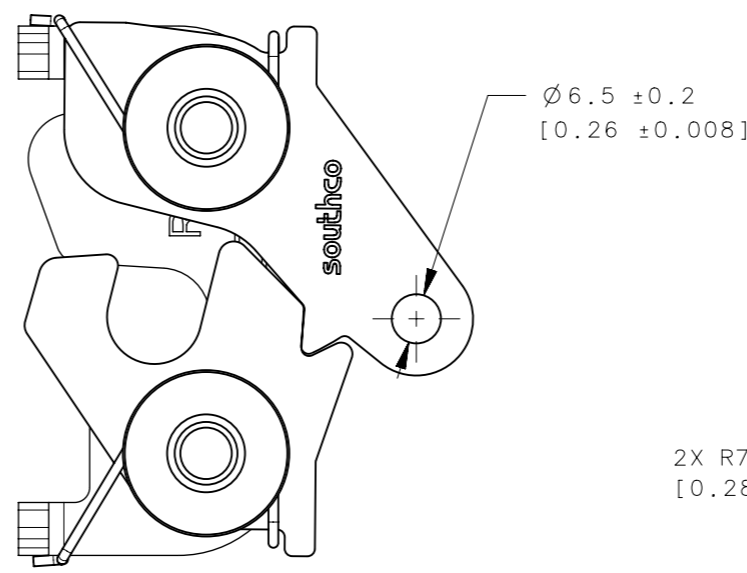
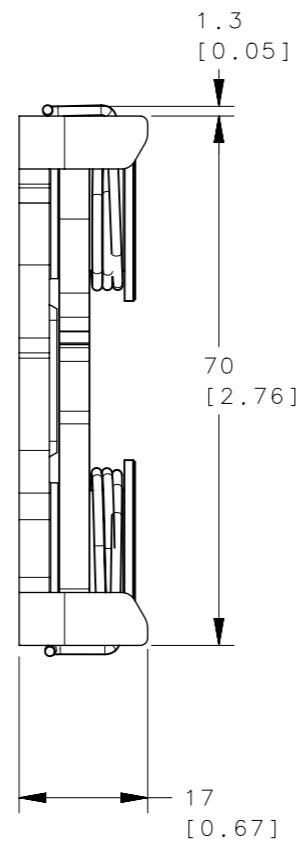
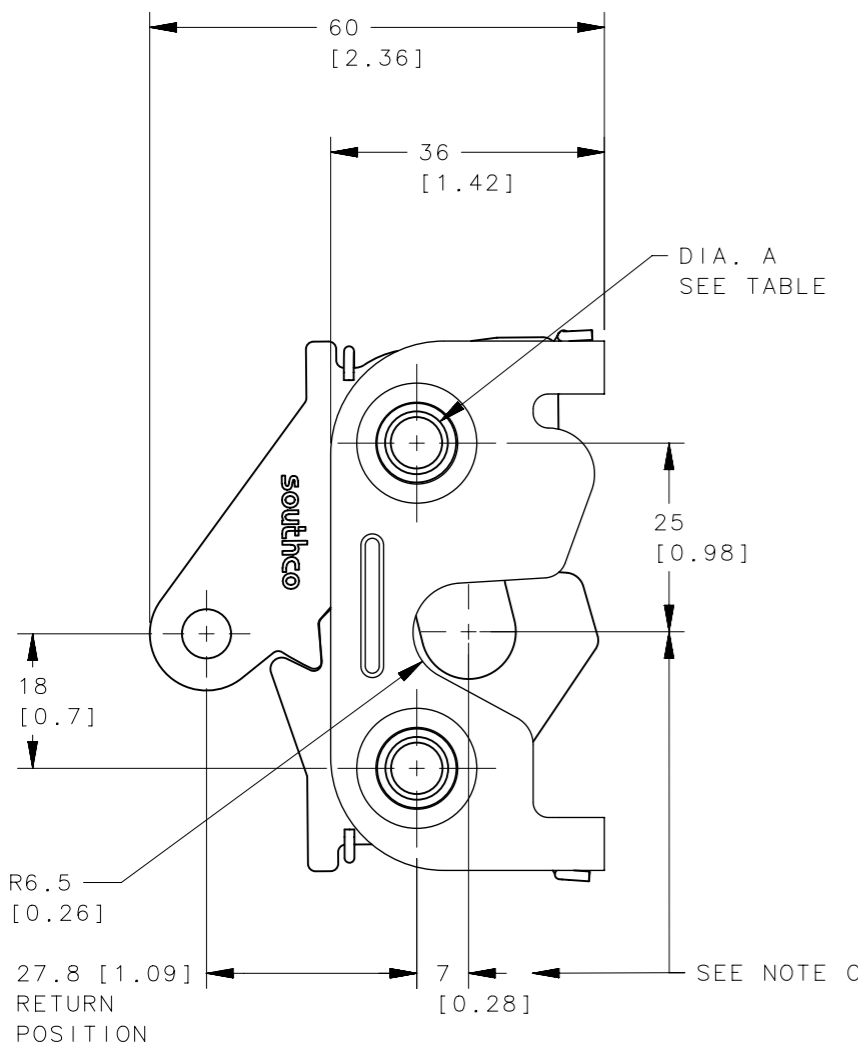
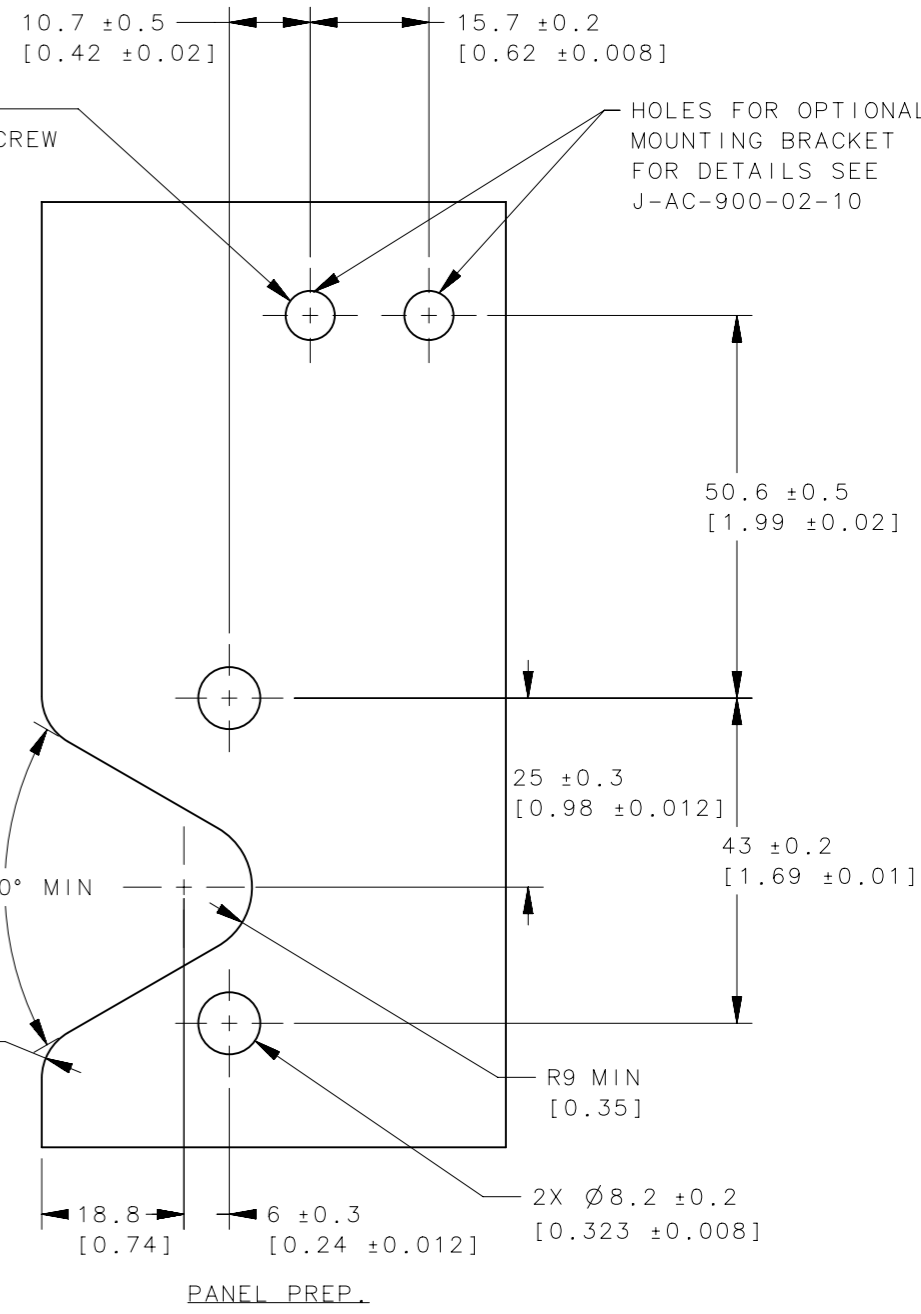


REVISION HISTORY			
REV	DATE	BY	DESCRIPTION
L	27MAR2023	NBK/VK	PRN: P2023-0575



2X Ø6.5 IF USING M6 SCREW
 2X H-SIZE DRILL IF USING 1/4 SCREW
 (FOR THROUGH HOLE MOUNTING)



NOTES:

A. MATERIAL AND FINISH FOR -10 PART:
 -HOUSING AND PIN: STEEL, ZINC PLATED, BRIGHT CHROMATE.
 -PAWL AND TRIGGER: HARDENED STEEL, ZINC PLATED, BRIGHT CHROMATE.
 -SPRING: STAINLESS STEEL, PASSIVATED.
 MATERIAL AND FINISH FOR -15 PART:
 -HOUSING AND PIN: STEEL, BLACK ZINC-NICKEL.
 -PAWL AND TRIGGER: HARDENED STEEL, BLACK ZINC-NICKEL.
 -SPRING: STAINLESS STEEL, BLACK ZINC-NICKEL.

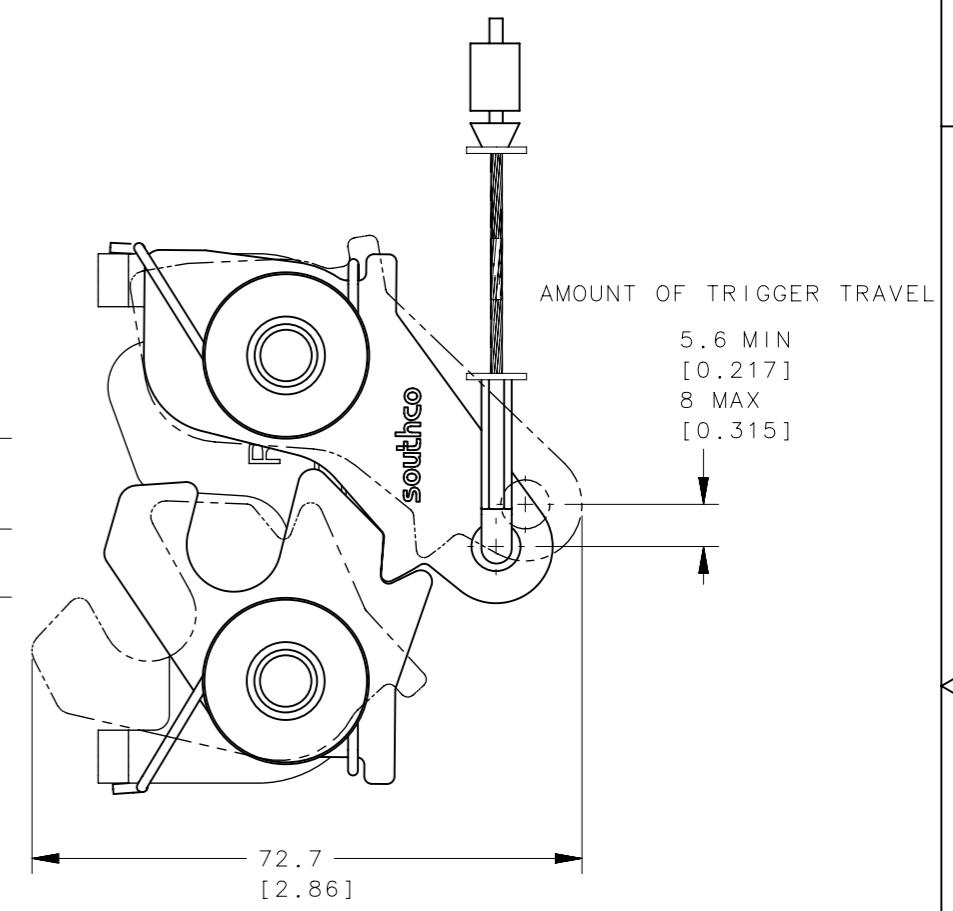
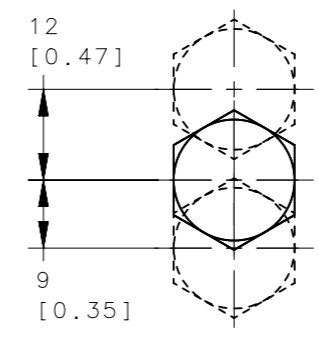
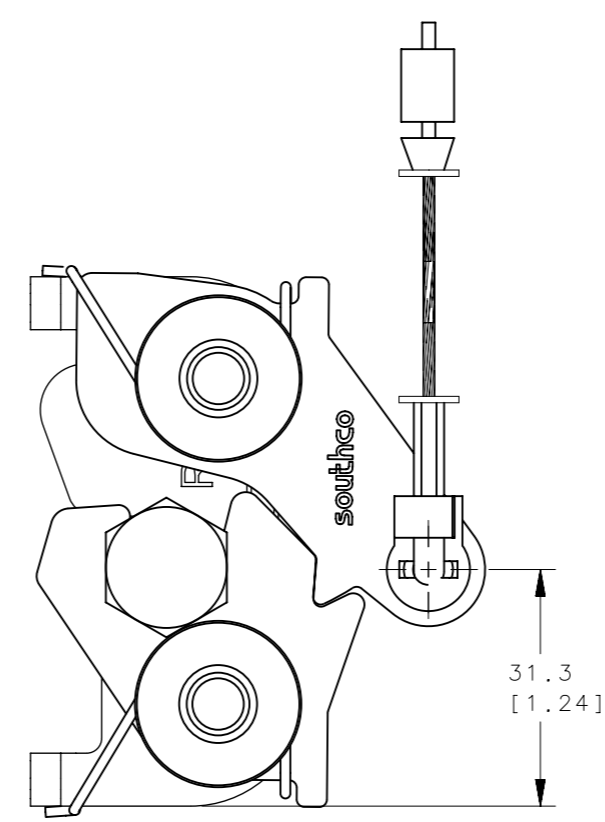
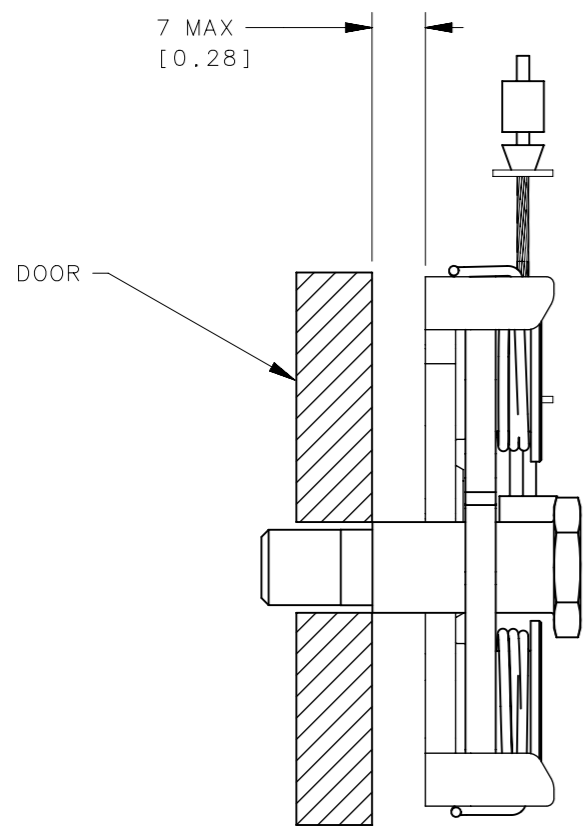
B. REFER TO TRADE DRAWING J-AC-C FOR CABLE SELECTION.

C. THESE DIMENSIONS REQUIRED FOR MOUNTING STRIKER BOLT.

R4-20-12-501-15	M8 THREAD ASSEMBLY	M8 x 1.25	SEE NOTE A	SEE NOTE A
R4-20-10-501-10	Ø8.3 THRU ASSEMBLY	Ø8.3 ±0.12	SEE NOTE A	SEE NOTE A
R4-20-11-501-10	5/16-18 THREAD ASSEMBLY	5/16 - 18	SEE NOTE A	SEE NOTE A
R4-20-12-501-10	M8 THREAD ASSEMBLY	M8 x 1.25	SEE NOTE A	SEE NOTE A
SOUTHCO PART No.	ITEM	DIMENSION A	MATERIAL	FINISH

THIRD ANGLE PROJECTION				
MILLIMETERS [IN]				
SURFACE AREA	TOLERANCES UNLESS OTHERWISE NOTED	DESCRIPTION PUSH TO CLOSE LATCH		
VOLUME	ALL DIMENSIONS WITHOUT TOLERANCES ARE FOR REFERENCE ONLY.	SIZE A3	SYSTEM NX	DWG NO. J-R4-20-10-501
PROPRIETARY ITEM EXCEPT FOR USES EXPRESSLY GRANTED IN WRITING, INFORMATION DISCLOSED HEREON IS CONFIDENTIAL AND ALL RIGHTS, PATENT AND OTHERWISE, ARE RESERVED BY SOUTHCO, INC.	PER ASME Y14.5M-1994	DRAWN BY ACH/DS	DATE 05JAN2009	SCALE 1:1
		SHEET		1 OF 3

REVISION HISTORY			
REV	DATE	BY	DESCRIPTION
L	27MAR2023	NBK/VK	PRN: P2023-0575



MISALIGNMENT VIEW
(SEE NOTE D)

NOTES:

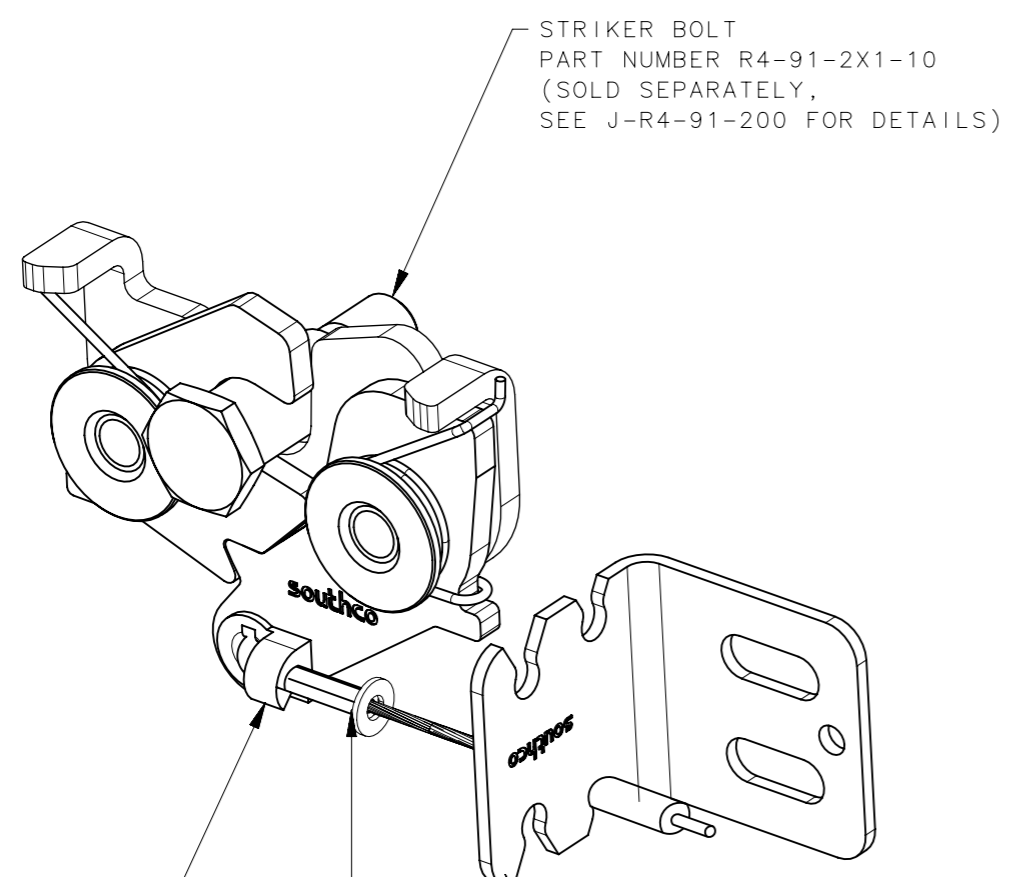
D. THE TOLERANCE BETWEEN THE LATCH AND THE STRIKER BOLT ASSUMES A NON-RIGID DOOR INSTALLATION THAT WILL ALLOW THE DOOR TO MOVE INTO THE NOMINAL POSITION DURING LATCHING. RIGID DOORS MUST HAVE THE STRIKER INSTALLED PER THE PANEL PREPARATION RECOMMENDATION.

R4-20-12-501-15	M8 THREAD ASSEMBLY	M8 x 1.25	SEE NOTE A	SEE NOTE A
R4-20-10-501-10	Ø8.3 THRU ASSEMBLY	Ø8.3 ±0.12	SEE NOTE A	SEE NOTE A
R4-20-11-501-10	5/16-18 THREAD ASSEMBLY	5/16 - 18	SEE NOTE A	SEE NOTE A
R4-20-12-501-10	M8 THREAD ASSEMBLY	M8 x 1.25	SEE NOTE A	SEE NOTE A
SOUTHCO PART No.	ITEM	DIMENSION A	MATERIAL	FINISH

THIRD ANGLE PROJECTION				
MILLIMETERS [IN]				
SURFACE AREA	TOLERANCES UNLESS OTHERWISE NOTED	DESCRIPTION PUSH TO CLOSE LATCH		
VOLUME	ALL DIMENSIONS WITHOUT TOLERANCES ARE FOR REFERENCE ONLY.	SIZE A3	SYSTEM NX	DWG NO. J-R4-20-10-501
PROPRIETARY ITEM	PER ASME Y14.5M-1994	DRAWN BY ACH/MJS	DATE 21NOV2008	SCALE 1:1
EXCEPT FOR USES EXPRESSLY GRANTED IN WRITING, INFORMATION DISCLOSED HEREON IS CONFIDENTIAL AND ALL RIGHTS, PATENT AND OTHERWISE, ARE RESERVED BY SOUTHCO, INC.				SHEET 2 OF 3

REVISION HISTORY			
REV	DATE	BY	DESCRIPTION
L	27MAR2023	NBK/VK	PRN: P2023-0575

NOTE:
ASSEMBLY SHOWN WITH SOUTHCO CABLE FITTING "B" AND CABLE "13". SEE J-AC-C FOR DETAILS



OPTIONAL CLIP
PART NUMBER R4-0-43922-1
(SOLD SEPARATELY,
SEE DRAWING J-R4-0-43922
FOR DETAILS)

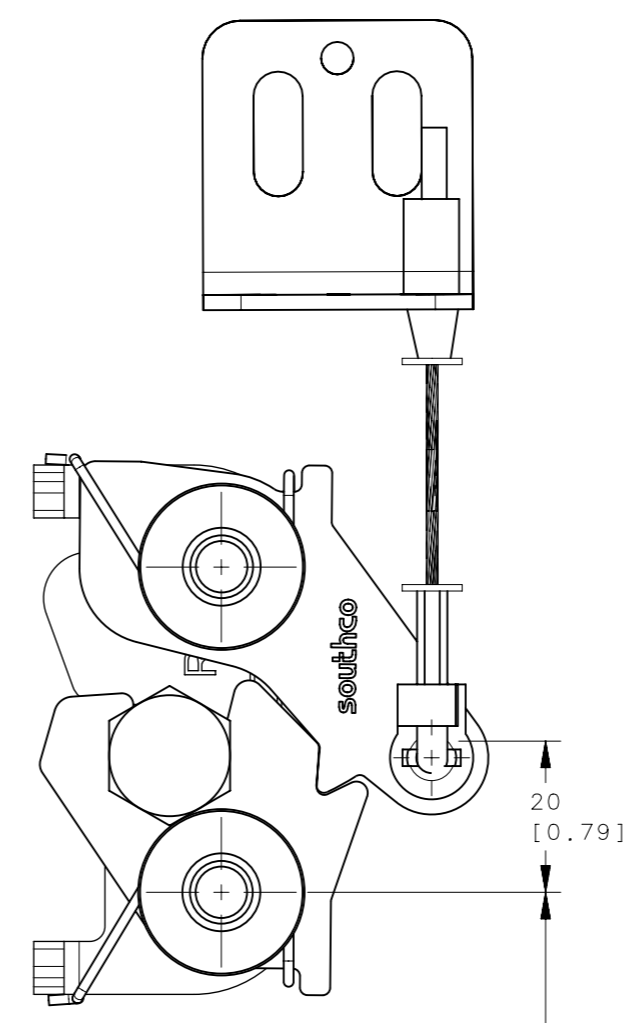
OPTIONAL CABLE ASSEMBLY
SEE DRAWING J-AC-C FOR DETAILS
(SOLD SEPARATELY)

(CABLE SHOWN WITH
CABLE FITTING "B" IN
A CABLE ASSEMBLY "13")

STRIKER BOLT
PART NUMBER R4-91-2X1-10
(SOLD SEPARATELY,
SEE J-R4-91-200 FOR DETAILS)

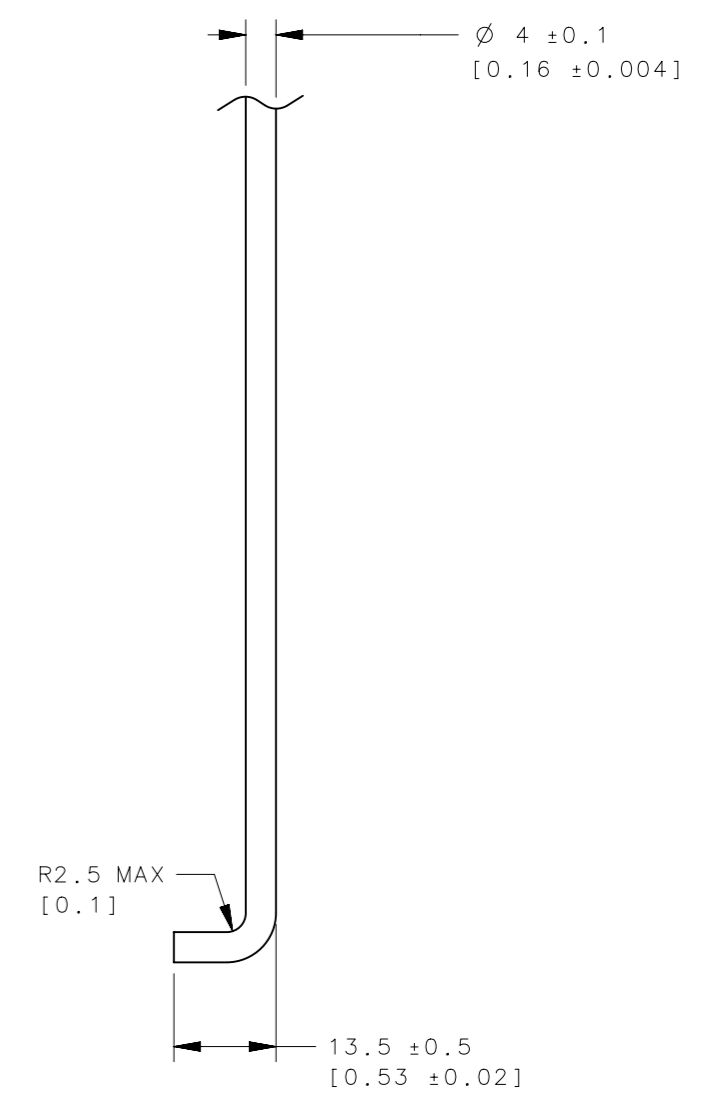
OPTIONAL CABLE ASSEMBLY
MOUNTING BRACKET
PART NUMBER AC-900-02-10
(SOLD SEPARATELY)

INSTALL USING 3 SCREWS
(2 MOUNTING, 1 SET)
(SCREWS NOT SUPPLIED)
SEE J-AC-900-02-10 FOR
DETAILS



MOUNTING HOLE TO CABLE OR ROD
BEARING POINT. USE TO DETERMINE THE
OVERALL CABLE LENGTH, SEE J-AC-C FOR
ADDITIONAL DETAILS

ROD OPTION



R4-20-12-501-15	M8 THREAD ASSEMBLY	M8 x 1.25	SEE NOTE A	SEE NOTE A
R4-20-10-501-10	Ø8.3 THRU ASSEMBLY	Ø8.3 ±0.12	SEE NOTE A	SEE NOTE A
R4-20-11-501-10	5/16-18 THREAD ASSEMBLY	5/16 - 18	SEE NOTE A	SEE NOTE A
R4-20-12-501-10	M8 THREAD ASSEMBLY	M8 x 1.25	SEE NOTE A	SEE NOTE A
SOUTHCO PART No.	ITEM	DIMENSION A	MATERIAL	FINISH

THIRD ANGLE PROJECTION		 CONNECT • CREATE • INNOVATE		
MILLIMETERS [IN]				
TOLERANCES UNLESS OTHERWISE NOTED		DESCRIPTION PUSH TO CLOSE LATCH		
ALL DIMENSIONS WITHOUT TOLERANCES ARE FOR REFERENCE ONLY.		SIZE A3	SYSTEM NX	DWG NO. J-R4-20-10-501
PER ASME Y14.5M-1994		DRAWN BY ACH/DS	DATE 21NOV2008	SCALE 1:1
<small>PROPRIETARY ITEM EXCEPT FOR USES EXPRESSLY GRANTED IN WRITING, INFORMATION DISCLOSED HEREON IS CONFIDENTIAL AND ALL RIGHTS, PATENT AND OTHERWISE, ARE RESERVED BY SOUTHCO, INC.</small>		SHEET 3 OF 3		