

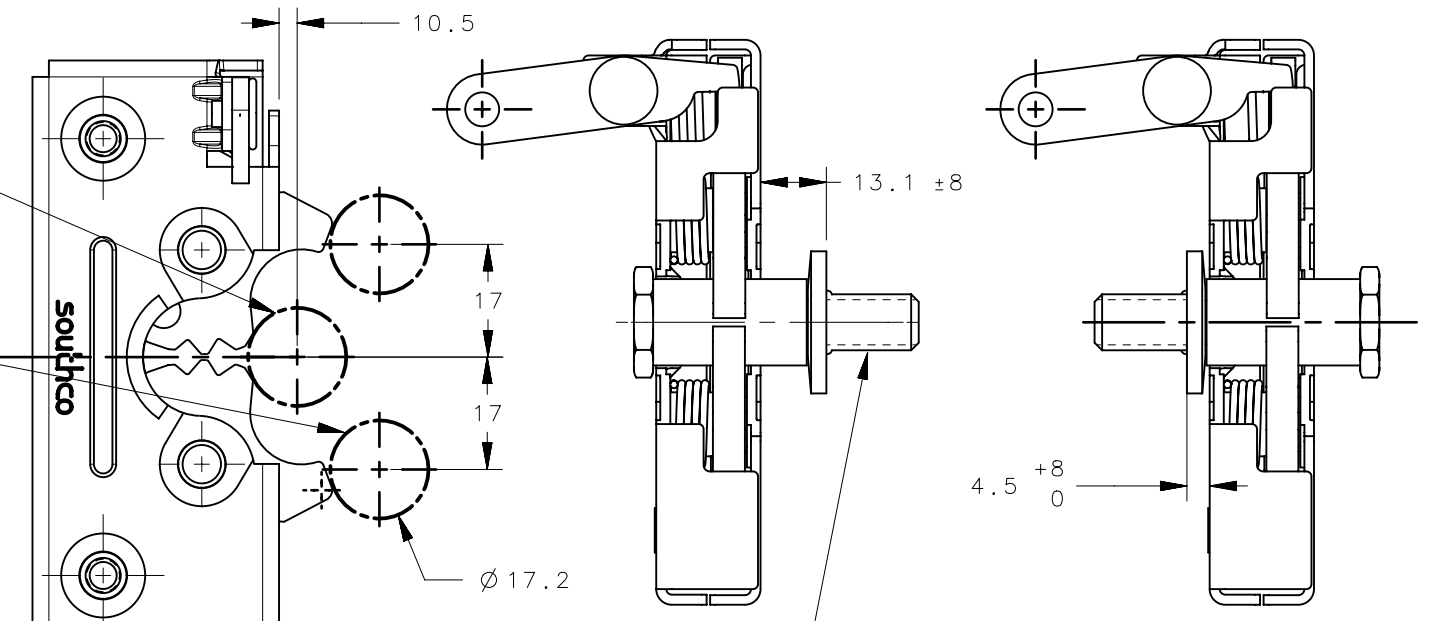
REVISION HISTORY			
REV	DATE	BY	DESCRIPTION
E	11SEP2023	CRM/DMS	PRN: P2023-1687

NOTES:

- ASSEMBLY COMPLIES WITH LATCH REQUIREMENTS OF FMVSS 206 WHEN TESTED IN ACCORDANCE WITH SAE J839.
- MATERIALS:
PINS, LEVER, RIVET: STEEL, ZINC PLATE BRIGHT CHROMATE
PAWLS, AND TRIGGER: HEAT TREATED CARBON STEEL, LUBRICATED WITH OVEN CURED DRY LUBRICANT.
SPRINGS: STAINLESS STEEL, PASSIVATED (BLACK OXIDE)
FRAME HSG. FRONT AND BACK: HIGH STRENGTH STEEL, ZINC PLATED BRIGHT CHROMATE
- MAXIMUM RECCOMENDED MOUNTING TOURQE NOT TO EXCEDE 13.3 N-m (120in-lbs)
- INSTALATION INSTRUCTIONS:
-INSTALL SOUTHCO STRIKER BOLT ASSEMBLY IN DOOR FRAME
-CLOSE DOOR CHECKING FOR INTERFERENCE OR MISALIGNMENT
-ADJUST STRIKER AS NECESSARY SHIM IF REQUIRED TO ACHIEVE PROPER POSITIONING OF STRIKER HEAD.
-ADJUST STRIKER SO IT ENGAGES IN THE CENTER OF THE LATCH
-VERIFY THAT BOTH STAGES OF LATCH ARE FUNCTIONAL
-CHECK DOOR ALIGNMENT AND SEAL PRESSURES.
- PAWL OPENING ALLOWS FOR SELF-ALIGNMENT OF FLEXIBLE DOOR SYSTEMS ONLY, CONTACT SOUTHCO SALES OR ENGINEERING FOR APPLICATION ASSISTANCE.

STRIKER SHOWN ALIGNED AT LATCH CENTER FOR A RIGID DOOR APPLICATION. SEE MOUNTING INSTRUCTIONS IN NOTE 4.

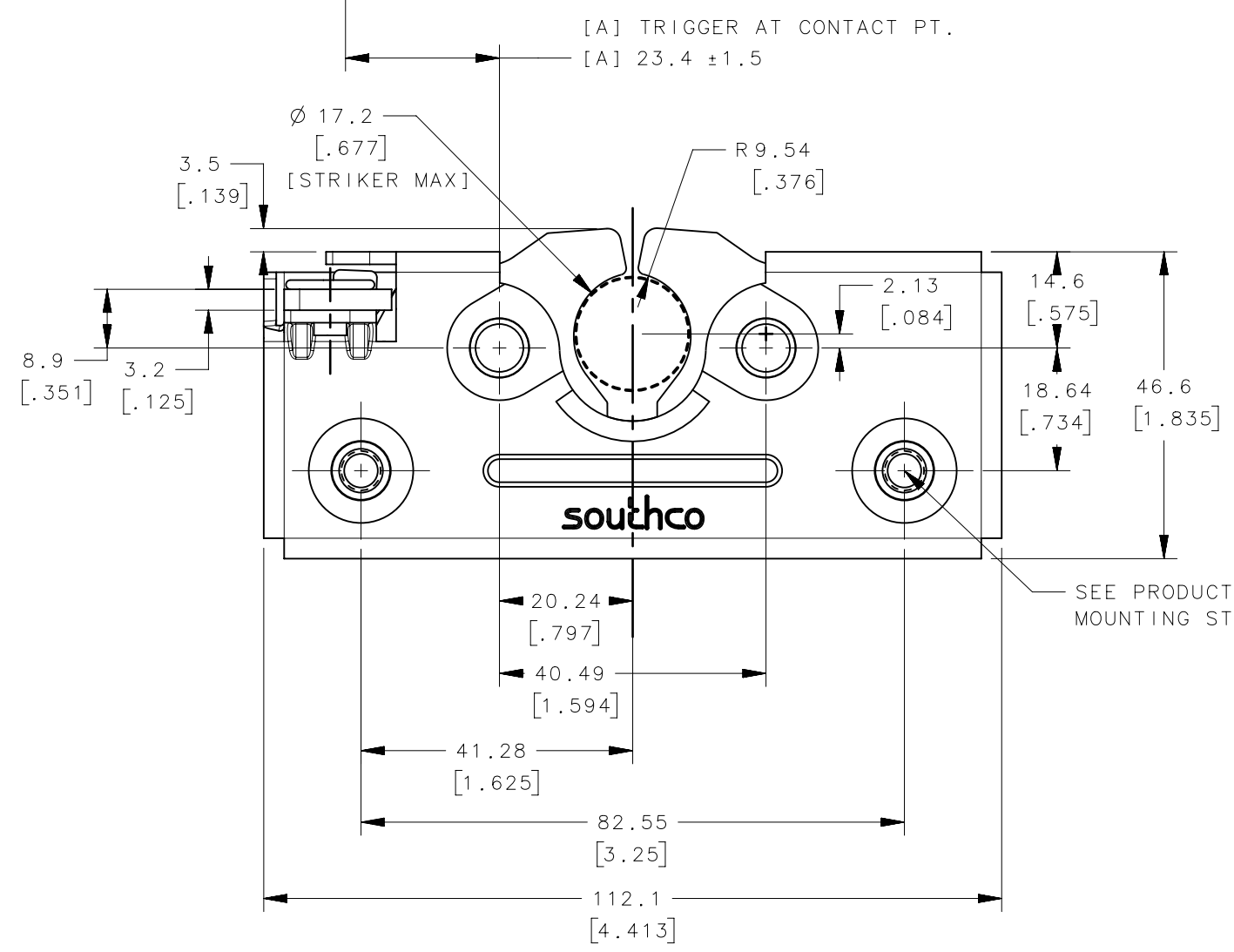
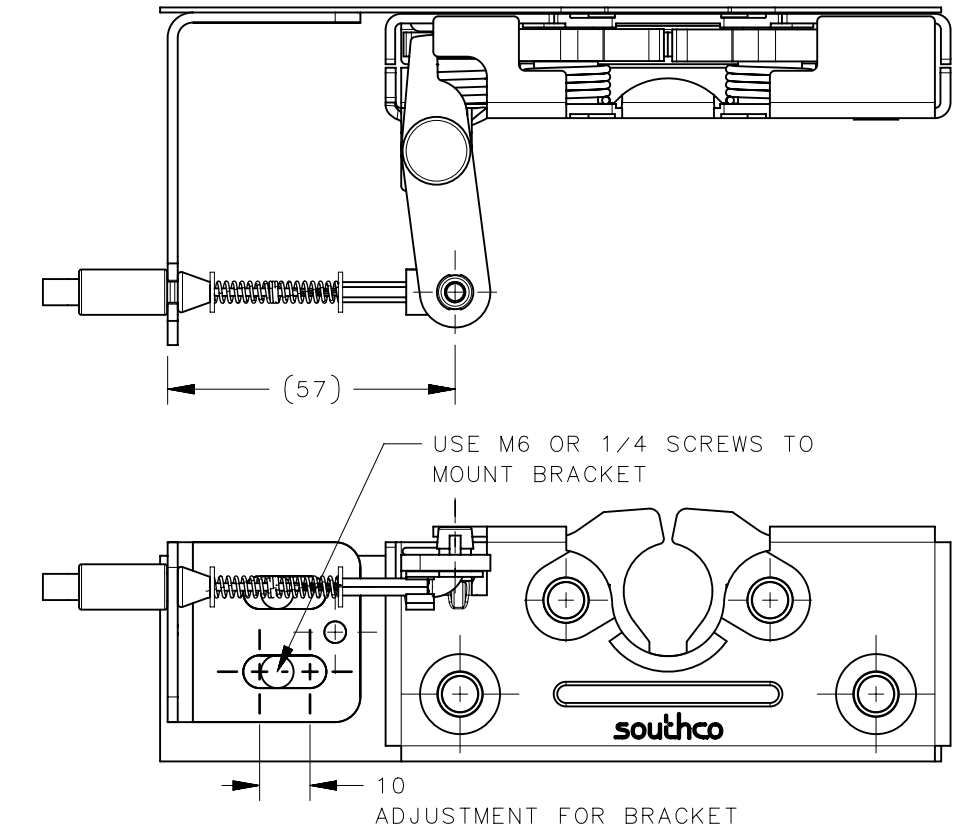
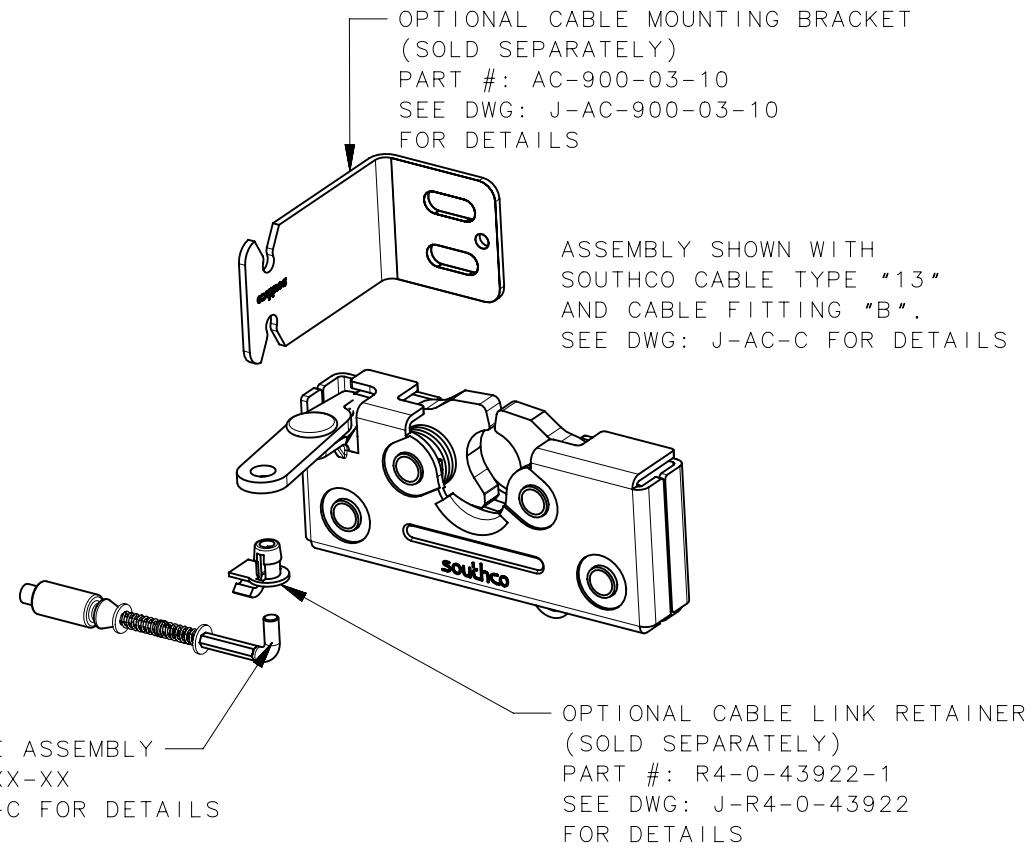
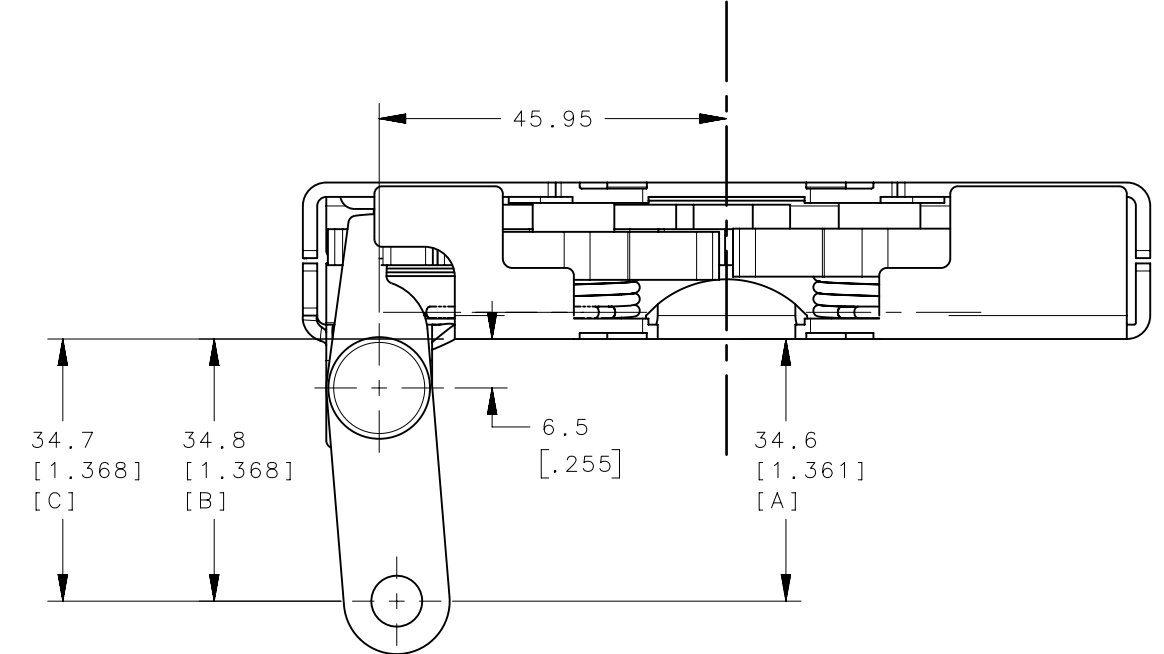
THE TOLERANCE BETWEEN THE LATCH AND STRIKER BOLT ASSUMES A NON-RIGID DOOR INSTALLATION THAT WILL ALLOW THE DOOR TO MOVE INTO THE NOMINAL POSITION DURING LATCHING. RIGID DOORS MUST HAVE THE STRIKER INSTALLED PER THE PANEL PREPARATION RECOMMENDATION



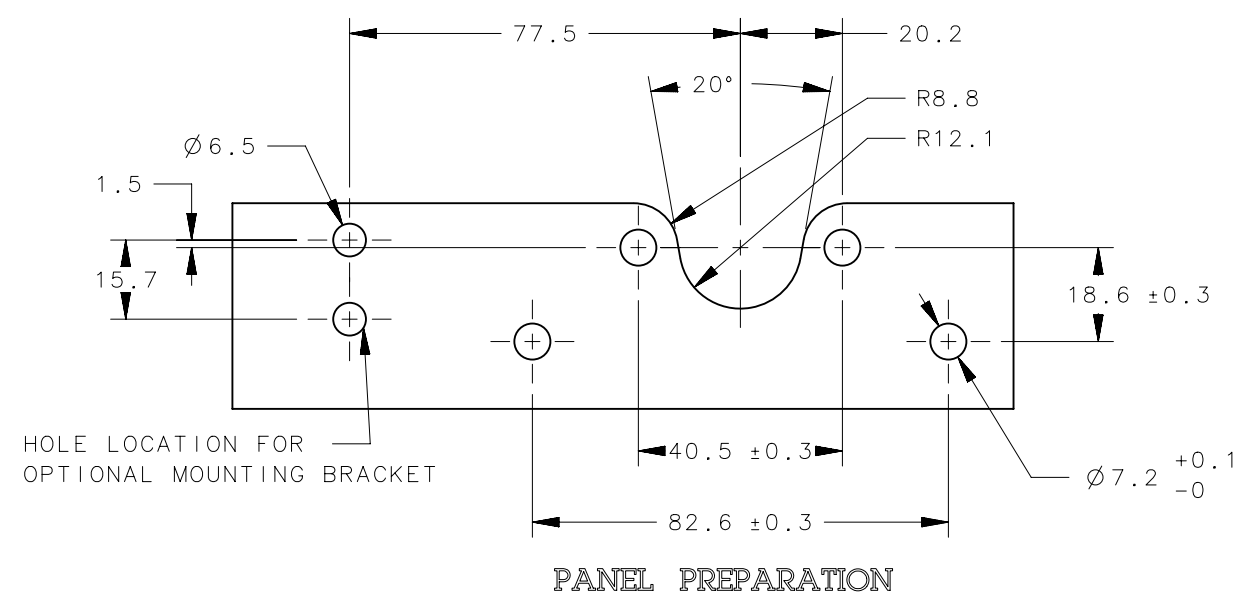
STRIKER BOLT ASSEMBLY (SOLD SEPARATELY) SEE J-R4-90-400 FOR DETAILS

STRIKER SHOWN AT NOMINAL MOUNTING LOCATIONS FROM BOTH SIDES

AVAILABLE STRIKER BOLTS	
PART NUMBER	THREAD SIZE
R4-90-491-10	7/16-14
R4-90-4101-10	1/2-13
R4-90-441-10	M12-1.75



- AVAILABLE OPTIONS**
- LEFT OR RIGHT HAND CONFIGURATIONS (LEFT HAND SHOWN)
 - MOUNT WITH THRU HOLE, 1/4-20, OR M6x1 OPTIONS
 - ADDITIONAL LEVER OPTIONS AVAILABLE UPON REQUEST: CONTACT SOUTHCO ENGINEERING AND/OR SALES



R4-50-42-101-10	LEFT HANDED	M6 MOUNT
R4-50-41-101-10	LEFT HANDED	1/4-20 MOUNT
R4-50-40-101-10	LEFT HANDED	THRU MOUNT
R4-50-32-101-10	RIGHT HANDED	M6 MOUNT
R4-50-31-101-10	RIGHT HANDED	1/4-20 MOUNT
R4-50-30-101-10	RIGHT HANDED	THRU MOUNT
SOUTHCO PART NUMBER	HANDED	MOUNT STYLE

THIRD ANGLE PROJECTION		<p>CONNECT · CREATE · INNOVATE</p>	
MILLIMETERS [IN]			
SURFACE AREA		DESCRIPTION RH & LH ROTARY LATCH	
VOLUME		SIZE C	SYSTEM NX
PROPRIETARY ITEM EXCEPT FOR USES EXPRESSLY GRANTED IN WRITING, INFORMATION DISCLOSED HEREON IS CONFIDENTIAL AND ALL RIGHTS, PATENT AND OTHERWISE, ARE RESERVED BY SOUTHCO, INC.		DWG NO. J-R4-50	SCALE 2/3
PER ASME Y14.5M-1994		DRAWN BY CMK	SHEET 1 OF 1