

REV	DATE	DRAWN/CHKD	DESCRIPTION
C	11OCT96	SWD	PRN: S-93-23
D	23FEB99	JDK/CHW	PRN: C2-139
E	30APR2003	VNI/MJS	PRN: P2003-0339
F	19JUN2003	RLR/MJS	PRN: P2003-0504
G	23JUL2013	MJS/TVA	PRN: P2013-1498
H	13AUG2018	CMS/LT	PRN: P2018-1902
I	18DEC2021	RSN/MBT	PRN: P2021-2431
J	17MAY2022	CMS/CTG	PRN: P2022-0794

SCALE	DATE	DRAWN/CHKD	DATE	SCALE	DRAWN/CHKD
1:1	23FEB93	JGK			

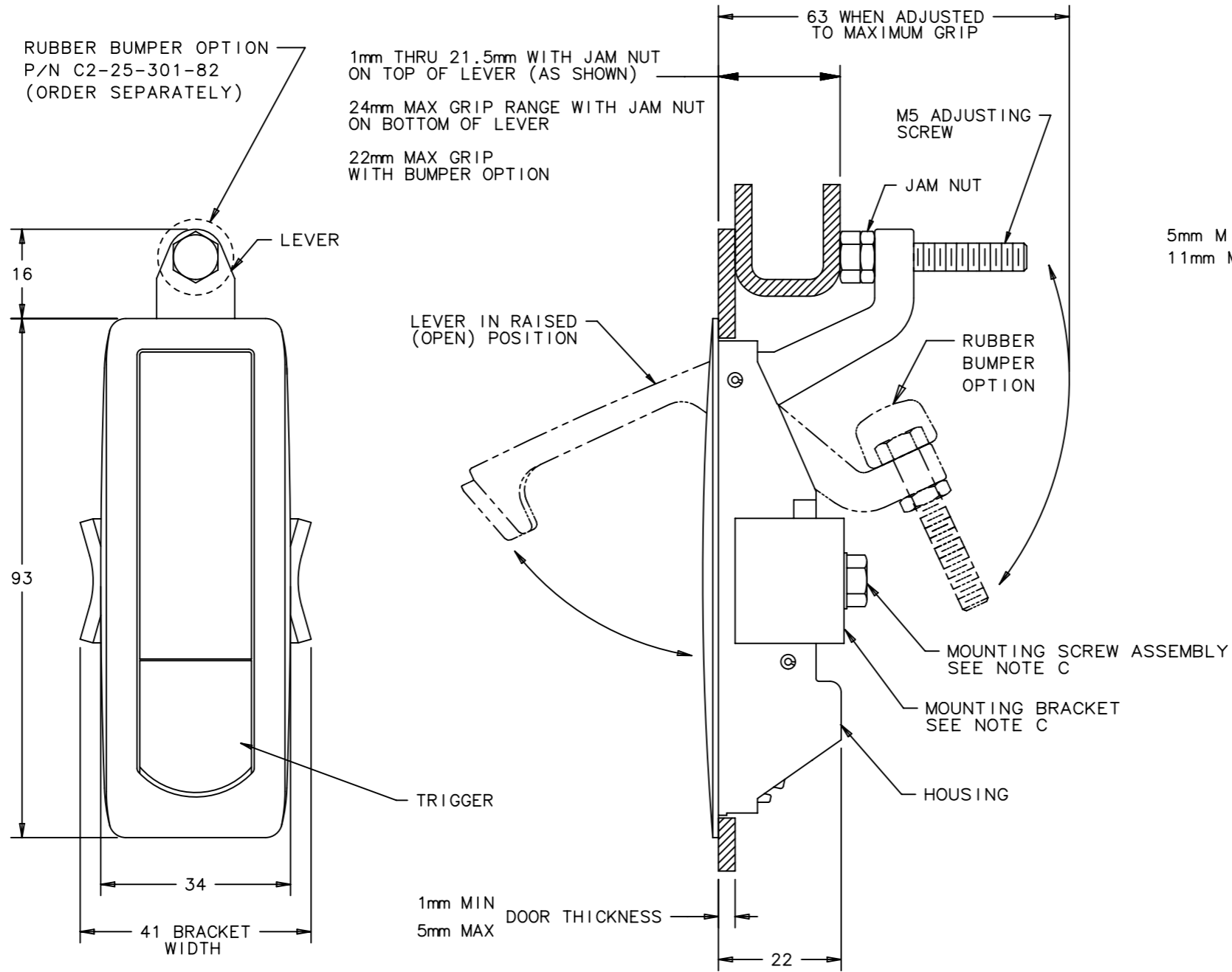
MILLIMETERS

ALL DIMENSIONS WITHOUT TOLERANCES ARE FOR REFERENCE ONLY.

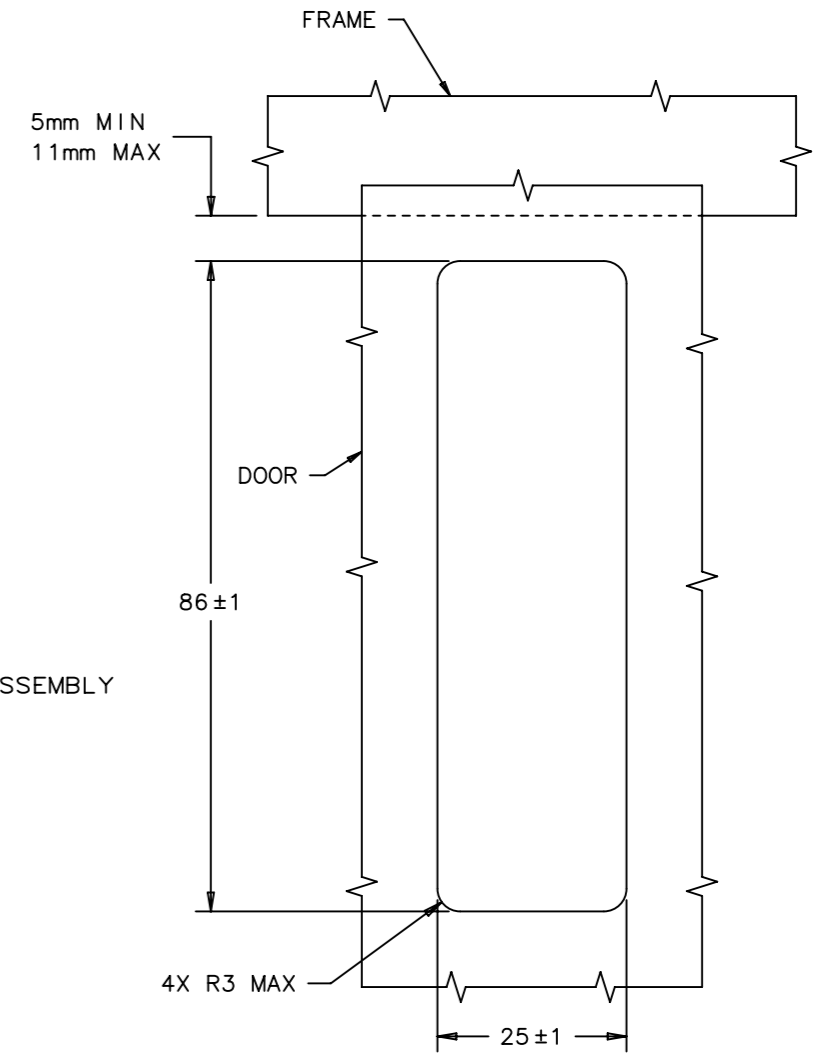
A3 PAPER SIZE

THIRD ANGLE PROJECTION

ASSEMBLY PART NUMBER TABLE	
BLACK POWDER COATED	TEXTURED CHROME FINISH
C2-32-35	C2-32-31



- A. MATERIAL AND FINISH
- HOUSING, LEVER AND TRIGGER: DIE CAST ZINC, SEE ASSEMBLY PART NUMBER TABLE.
 - U-SPRING: 302 STAINLESS STEEL, PASSIVATED.
 - TORSION SPRING: 302 STAINLESS STEEL, NATURAL.
 - SPIROL PIN: SAE 51420, NATURAL.
 - LOCKWASHER: SPRING STEEL, ZINC ALLOY PLATE BRIGHT PLUS SEALER.
 - SCREWS AND HEX NUT: LOW CARBON STEEL, ZINC ALLOY PLATE BRIGHT PLUS SEALER.
 - BRACKET: 1010 STEEL, ZINC ALLOY PLATE BRIGHT PLUS SEALER.
- B. MOUNTING SCREW ASSEMBLY CONSISTS OF: M5 SCREW WITH LOCKWASHER. USE LONGER SCREWS (NOT SUPPLIED) FOR THICKER DOORS.
- C. MOUNTING BRACKET AND SCREW ASSEMBLY PACKAGED IN PLASTIC BAG, SHIPPED UNASSEMBLED.



PANEL PREPARATION