

REV	DATE	DRAWN/CHKD	DESCRIPTION
C	25NOV96	GDM	PRN: C3-113
D	23FEB99	JDK/CHW	PRN: C2-139
E	01MAY2003	VNI/MJS	PRN: P2003-0339
F	19JUN2003	RLR/MJS	PRN: P2003-0504
G	25JUL2013	MJS/TVA	PRN: P2013-1498
H	13AUG2018	CMS/LT	PRN: P2018-1902
I	20DEC2021	RSN/MBT	PRN: P2021-2431
J	17MAY2022	CMS/CTG	PRN: P2022-0794

SCALE
1:1

DRAWN/CHKD
JGK

DATE
24FEB93

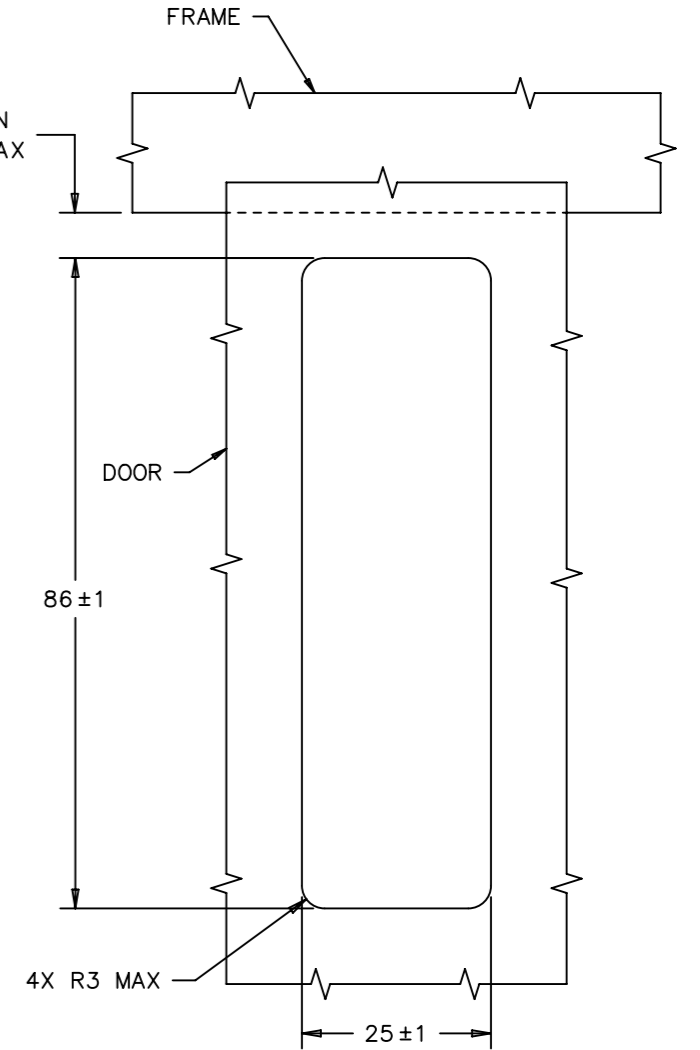
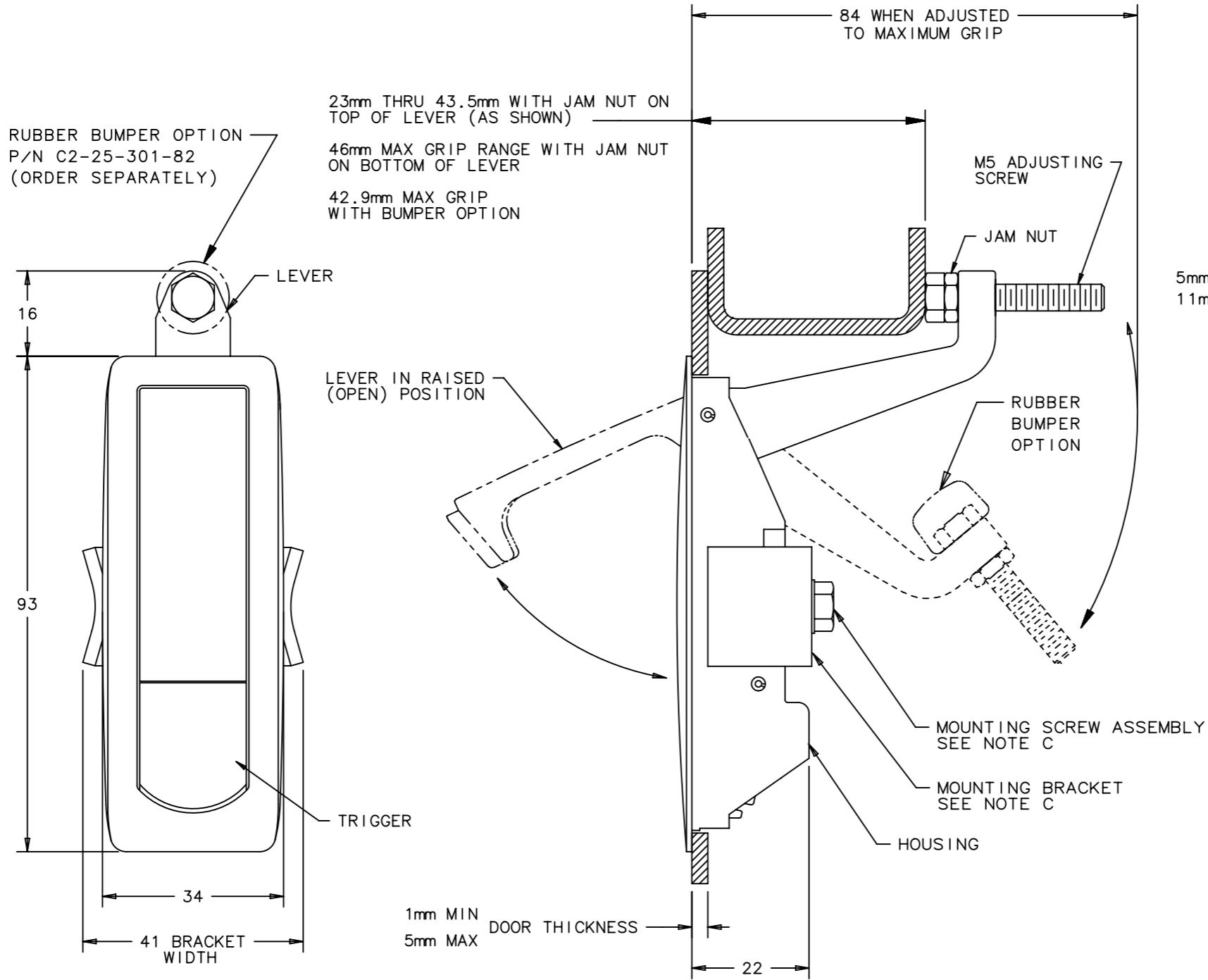
MILLIMETERS

ALL DIMENSIONS WITHOUT TOLERANCES ARE FOR REFERENCE ONLY.

A3 PAPER SIZE

THIRD ANGLE PROJECTION

ASSEMBLY PART NUMBER TABLE	
TEXTURED CHROME FINISH	BLACK POWDER COATED
C2-33-31	C2-33-35



PANEL PREPARATION

NOTES:

- A. MATERIAL AND FINISH
1. HOUSING, LEVER AND TRIGGER: DIE CAST ZINC, SEE ASSEMBLY PART NUMBER TABLE.
 2. U-SPRING: 302 STAINLESS STEEL, PASSIVATED.
 3. TORSION SPRING: 302 STAINLESS STEEL, NATURAL.
 4. SPIROL PIN: SAE 51420, NATURAL
 5. LOCKWASHER: SPRING STEEL, ZINC ALLOY PLATE BRIGHT PLUS SEALER.
 6. SCREWS AND HEX NUT: LOW CARBON STEEL, ZINC ALLOY PLATE BRIGHT PLUS SEALER.
 7. BRACKET: 1010 STEEL, ZINC ALLOY PLATE BRIGHT PLUS SEALER.
- B. MOUNTING SCREW ASSEMBLY CONSISTS OF: M5 SCREW WITH LOCKWASHER. USE LONGER SCREWS (NOT SUPPLIED) FOR THICKER DOORS.
- C. MOUNTING BRACKET AND SCREW ASSEMBLY PACKAGED IN PLASTIC BAG, SHIPPED UNASSEMBLED.