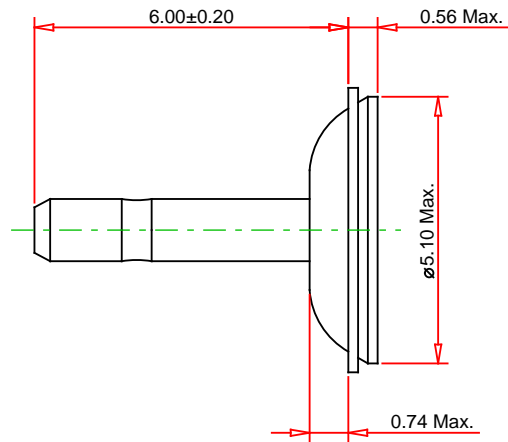
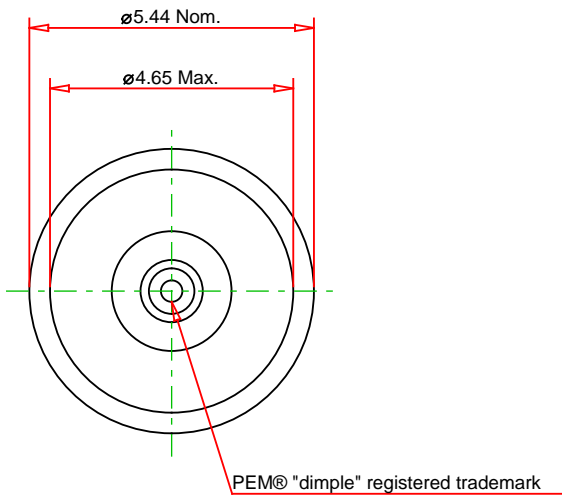
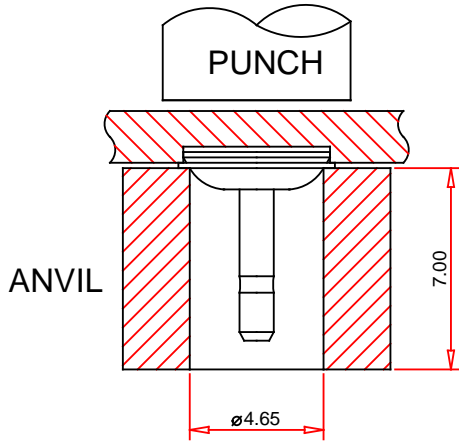


RECOMMENDED
INSTALLATION
TOOLING



© 2024 PennEngineering

ALL DIMENSIONS IN MILLIMETERS

DATE 10-APR-2024

NOTE : DRAWING NOT TO SCALE

THREAD : NONE

MOUNTING HOLE DIA. : 5.11 +0.08

MATERIAL: STAINLESS STEEL

PANEL THICKNESS: 1.8 MIN

HEAT TREAT: NONE

MAX. PANEL HARDNESS: HRB 70 / HB 125

FINISH: NONE

MIN CENTERLINE-TO-EDGE: 3.6

DESCRIPTION :
MRHPS™ Floating Pins



PennEngineering®

PART NO. :
MRHPS-1.2MM-600

EMAIL: TECHSUPPORT@PEMNET.COM
WWW.PEMNET.COM