

REV	DATE	DRAWN/CHKD	DESCRIPTION	PART NUMBER	MATERIAL	FINISH
A	27SEP2010	ACH	RELEASED FOR PRODUCTION	E5-67YY	STEEL	ZINC PLATE

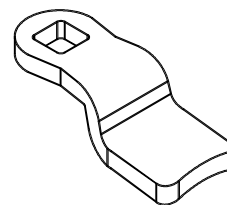
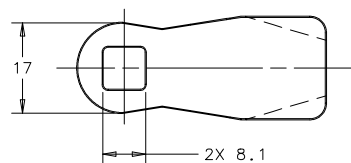
MILLIMETERS

TOLERANCES UNLESS OTHERWISE NOTED

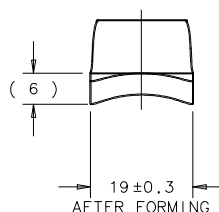
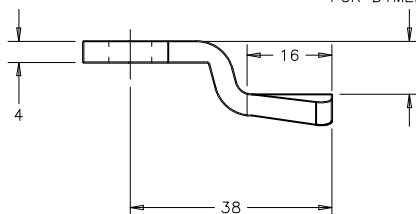
UP TO 0.5	±0.05
OVER 0.5 UP TO 6	±0.1
OVER 6 UP TO 30	±0.2
OVER 30	±0.3
ANGLES	±1°

THIRD ANGLE PROJECTION

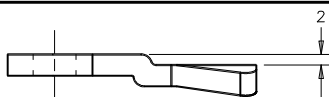
A3 PAPER SIZE



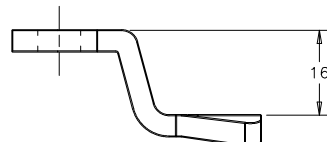
SEE PART NUMBERS BELOW FOR DIMENSION



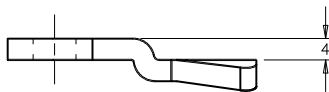
PART NUMBER: E5-6711
YY=11



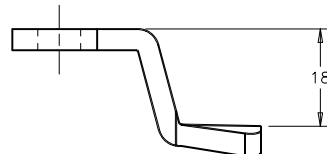
PART NUMBER: E5-6718
YY=18



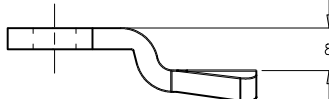
PART NUMBER: E5-6712
YY=12



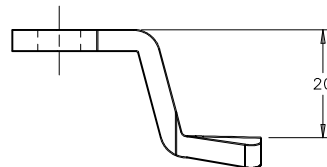
PART NUMBER: E5-6719
YY=19



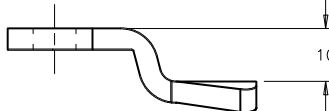
PART NUMBER: E5-6714
YY=14



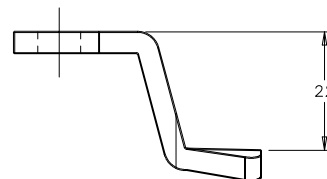
PART NUMBER: E5-6720
YY=20



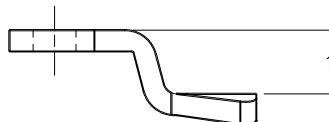
PART NUMBER: E5-6715
YY=15



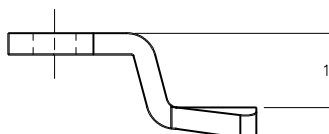
PART NUMBER: E5-6721
YY=21



PART NUMBER: E5-6716
YY=16



PART NUMBER: E5-6717
YY=17



PART NUMBER: E5-6722
YY=22

