

DATE	DRAWN/CHKD	DESCRIPTION

PART NUMBER	SCREW PROJECTION		PANEL THICKNESS	
	P-1	P-2	MIN	MAX
4C-AA-M3-1B0-KEEE	1.5	3.8	1.6	-
4C-AA-M3-2B0-KEEE	3.2	5.5	1.6	-

**MILLIMETERS**

ALL DIMENSIONS WITHOUT TOLERANCES ARE FOR REFERENCE ONLY.

THIRD ANGLE PROJECTION

A3 PAPER SIZE

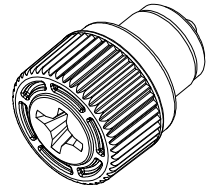
**MATERIAL AND FINISH:**

KNOB: PC/ABS UL94 VO RATED, FLAME RETARDANT; TRIARYLPHOSPHATE (DOES NOT CONTAIN BROMINATED, CHLORINATED, OR HALOGENATED ADDITIVES).

SCREW: HEAT TREATED LOW CARBON STEEL ZINC PLATE, CHROMATE PLUS SEALER

STANDOFF: STAINLESS STEEL, PASSIVATED

SPRING: 300 SERIES STAINLESS STEEL, PASSIVATED



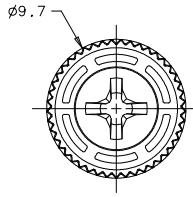
**\*AA\* SCREW RECESS**

PH - No.2 PHILLIPS  
TX - T15 TORX®  
TS - T10 TORX®/SLOT COMBINATION

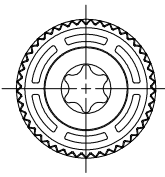
**\*EEE\* KNOB COLOR**

000 - BLACK

FOR ADDITIONAL COLORS SEE J-47-0-3



No. 2 PHILLIPS RECESS



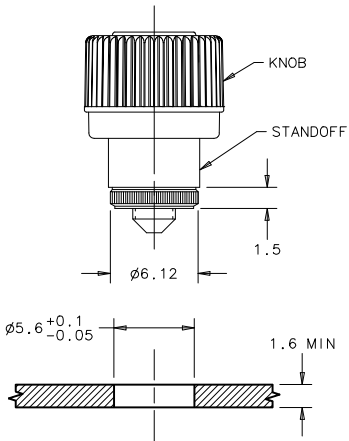
T15 TORX® RECESS



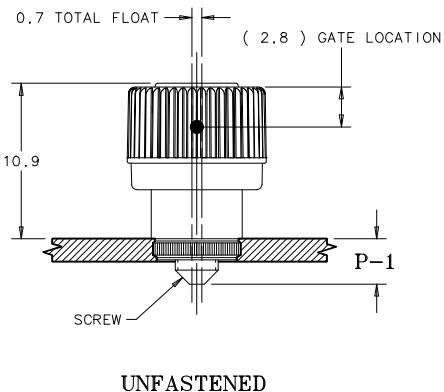
T10 TORX®/SLOT RECESS

- NOTES:**
- GATE NOT ORIENTED WITH RECESS OR FRAME BREAK.
  - FLASH HEIGHT GREATER THAN 0.3 NOT ACCEPTABLE.
  - SURFACE IMPERFECTIONS: INSPECT PARTS FROM 0.6 METERS FOR 3 SECONDS. FOUR SURFACE IMPERFECTIONS MAX PER PART. SURFACE IMPERFECTIONS NO LARGER THAN 2.3mm IN DIAMETER, HEIGHT, OR WIDTH.
  - KNOB AND SCREW ARE SPRING LOADED OUTWARD, AS SHOWN BELOW.

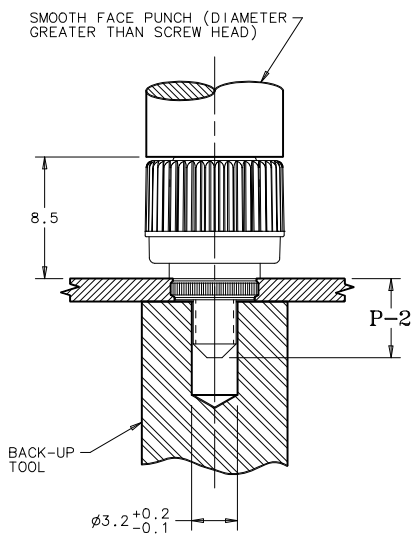
- TO INSTALL FASTENER:**
- DRILL OR PUNCH HOLE AS SHOWN BELOW.
  - PLACE STANDOFF INTO INSTALLATION HOLE.
  - PROVIDE SOLID BACK-UP BEHIND HOLE WITH CLEARANCE HOLE FOR SCREW AS SHOWN BELOW.
  - PRESS PART INTO PANEL UNTIL RECOMMENDED LOAD IS APPLIED.
  - PUNCH CANNOT TOUCH PLASTIC DURING INSTALLATION.



**PANEL PREPARATION**



**UNFASTENED**



**FASTENED**

PART NUMBER: 4C-PH-M3-2B0-KEEE SHOWN