

REV	DATE	DRAWN/CHKD	DESCRIPTION	SCREW RECESS	PART NUMBER	SCREW PROJECTION		PANEL THICKNESS		B	L	MILLIMETERS	
						P-1	P-2	"A" MIN	"A" MAX				
A	23OCT2002	AJH/VNI	PRN: P2002-0826	No. 2 PHILLIPS/SLOT	4C-PS-M5-3T2-KEEE	3.7	8.9	0.8	1.6	3.1	4.0	ALL DIMENSIONS WITHOUT TOLERANCES ARE FOR REFERENCE ONLY.	
B	04FEB2003	AJH/VNI	PRN: P2003-0090		4C-PS-M5-4T2-KEEE	5.3	10.5	1.6	2.4	3.9	4.8		
C	04MAR2005	PWM/AJH	PRN: P2004-1134		4C-PS-M5-4T3-KEEE	5.3	10.5	1.6	2.4	3.9	4.8		
						4C-TS-M5-3T2-KEEE	3.7	8.9	0.8	1.6	3.1		4.0
						4C-TS-M5-4T2-KEEE	5.3	10.5	1.6	2.4	3.9		4.8
						4C-TS-M5-4T3-KEEE	5.3	10.5	1.6	2.4	3.9		4.8

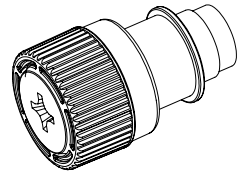
**MATERIAL AND FINISH:**

**KNOB:** PC/ABS UL94 VO RATED, FLAME RETARDANT; TRIARYLPHOSPHATE (DOES NOT CONTAIN BROMINATED, CHLORINATED, OR HALOGENATED ADDITIVES).

**SCREW:** HEAT TREATED LOW CARBON STEEL  
ZINC PLATE, CHROMATE PLUS SEALER

**STANDOFF:** ALUMINUM, NATURAL

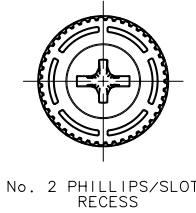
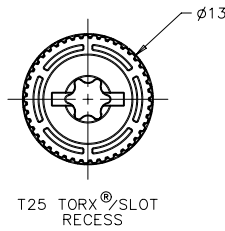
**SPRING:** 300 SERIES STAINLESS STEEL, PASSIVATED



"EEE" KNOB COLOR

000 - BLACK

FOR ADDITIONAL COLORS SEE J-47-0-3

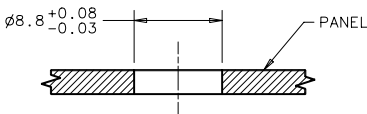
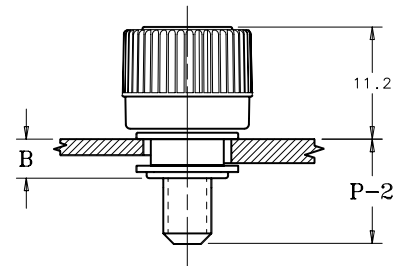
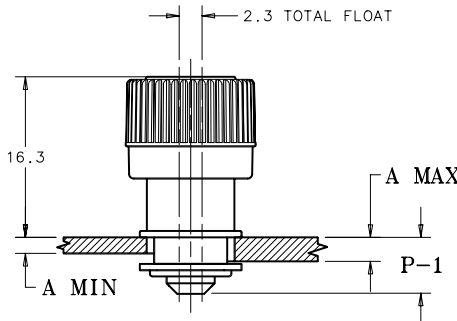
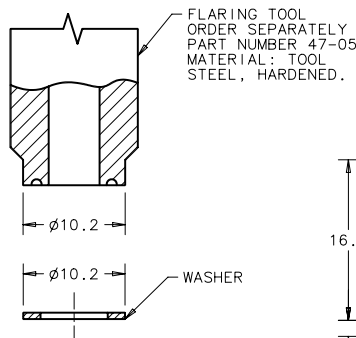
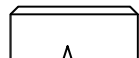


**NOTES:**

- GATE NOT ORIENTED WITH RECESS OR FRAME BREAK.
- FLASH HEIGHT GREATER THAN 0.3 NOT ACCEPTABLE.
- SURFACE IMPERFECTIONS: INSPECT PARTS FROM 0.6 METERS FOR 3 SECONDS. FOUR SURFACE IMPERFECTIONS MAX PER PART. SURFACE IMPERFECTIONS NO LARGER THAN 2.3mm IN DIAMETER, HEIGHT, OR WIDTH.
- KNOB AND SCREW ARE SPRING LOADED OUTWARD, AS SHOWN BELOW.

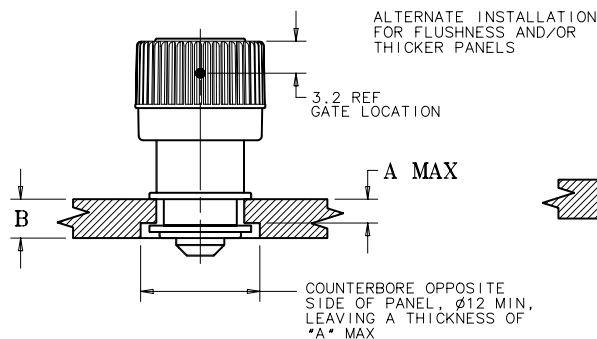
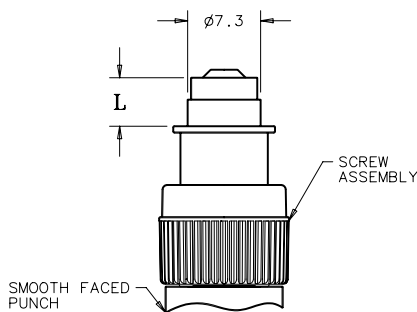
**TO INSTALL FASTENER:**

- DRILL OR PUNCH HOLE AS SHOWN BELOW.
- PLACE FERRULE INTO INSTALLATION HOLE.
- CENTER TOOL ON THE SCREW THREAD, THEN ROLL FERRULE OVER WASHER TO CAPTIVATE THE ASSEMBLY.
- PUNCH CANNOT TOUCH PLASTIC DURING INSTALLATION.



**UNFASTENED**

**FASTENED**



**PANEL PREPARATION**