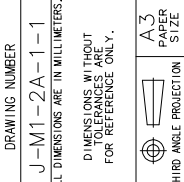


REV.	DATE	DRAWN	REVISION	ITEM	ASSEMBLY
A	28MAY99	RJB	PRN:M1-96		
B	20DEC99	RJB	PRN:M1-102		

COMPONENT	MATERIAL	FINISH/COLOR
HOUSING	PC/ABS BLEND	SEE NOTE A
KNOB	SEE NOTE A	SEE NOTE A
INTERNAL CYLINDER	ACE TAL	BLACK
NUT	GLASS FILLED NYLON	BLACK
SPRING	PAWLS	GLASS FILLED NYLON/BLACK
		304 STAINLESS STEEL/PASSIVATED
		GLASS FILLED NYLON/BLACK

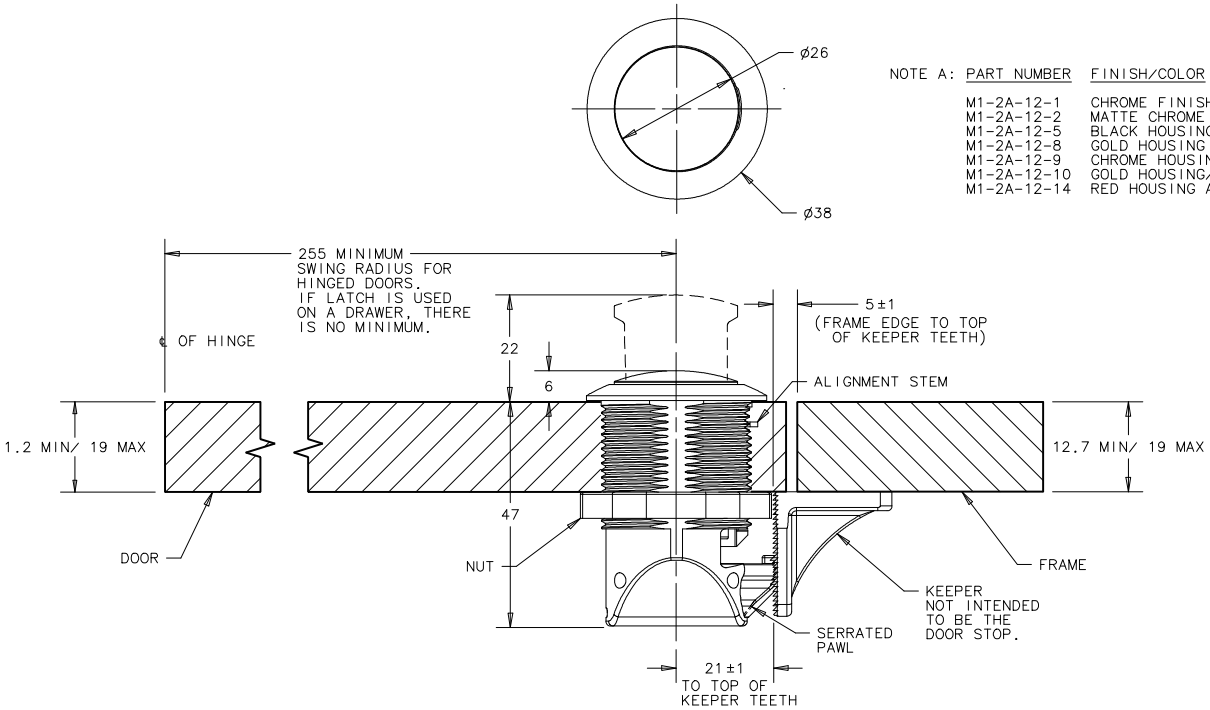
DRAWING NUMBER	J-M1-2A-1-1
SCALE	1 : 1
DATE	12 DEC 98
DRAWN	RJB
CHKD	

ALL DIMENSIONS ARE IN MILLIMETERS.
DIMENSIONS WITHOUT TOLERANCES ARE FOR REFERENCE ONLY.



PROPRIETARY ITEM - EXCEPT FOR USES EXPRESSLY GRANTED IN WRITING, INFORMATION DISCLOSED HEREIN IS UNCLASSIFIED AND OTHER RIGHTS ARE RESERVED BY SOUTHCO, INC.

M1-2A SELF-ADJUSTING FLUSH MOUNT ASSEMBLY

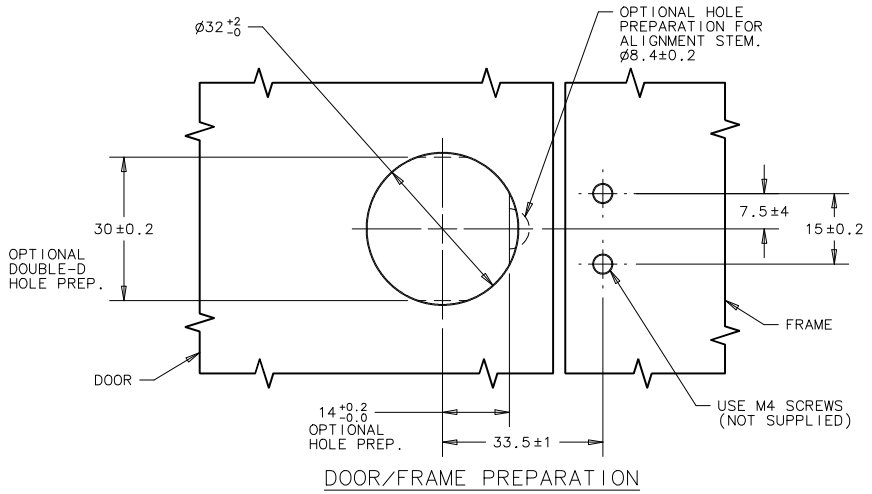


NOTE A: PART NUMBER FINISH/COLOR

PART NUMBER	FINISH/COLOR	KNOB MATERIAL
M1-2A-12-1	CHROME FINISH HOUSING AND KNOB	ABS
M1-2A-12-2	MATTE CHROME FINISH HOUSING AND KNOB	ABS
M1-2A-12-5	BLACK HOUSING AND KNOB	PC/ABS BLEND
M1-2A-12-6	GOLD HOUSING AND KNOB	ABS
M1-2A-12-8	CHROME HOUSING/GOLD KNOB	ABS
M1-2A-12-9	GOLD HOUSING/CHROME KNOB	ABS
M1-2A-12-10	RED HOUSING AND KNOB	PC/ABS BLEND

INSTALLATION

1. PREPARE DOOR AND FRAME AS SHOWN. THE FOLLOWING OPTIONAL PANEL PREPARATIONS MAY BE USED TO ENSURE LATCH ANTI-ROTATION: ALIGNMENT STEM HOLE FOR PANELS THICKER THAN 6.4 OR A DOUBLE-D HOLE. NOTE: ALIGNMENT STEM FOLDS AWAY IF ROUND HOLE PREPARATION IS USED.
2. INSERT LATCH THROUGH HOLE AND TIGHTEN NUT (38 ACROSS FLATS); MAXIMUM RECOMMENDED TIGHTENING TORQUE IS 4.2 N·m.
3. FOR ALIGNMENT STEM USAGE, PUSH ALIGNMENT STEM INTO SEMICIRCULAR HOLE AND HOLD IN PLACE AS NUT IS TIGHTENED.
4. INSTALL KEEPER.



DOOR/FRAME PREPARATION