

**southco**

REV	DATE	DRAWN/CHKD	DESCRIPTION	PART NUMBER	MATERIAL	FINISH	NOTE A
				62-10-603-XX		NOTE A	

600 SERIES LIFT AND TURN LATCH ASSEMBLY

DATE	DRAWN/CHKD	SCALE	DRAWING NUMBER
06DEC2000	SJT	CHW/75:1	J-62-10-603

TOLERANCES UNLESS OTHERWISE NOTED	
TWO PLACE (XX)	±.01
THREE PLACE (.XXX)	±.005
ANGLES	±1°

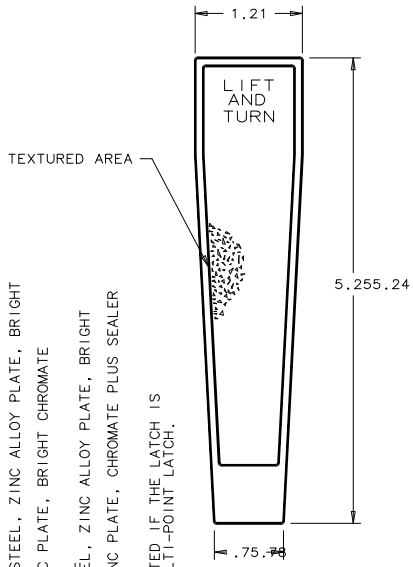
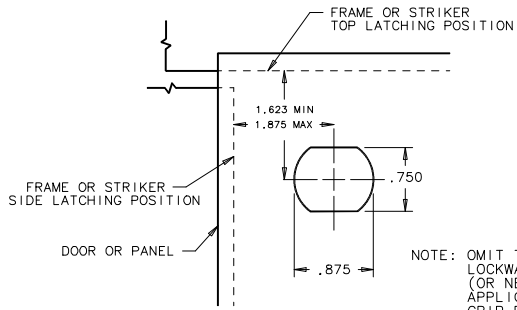


NOTES:

- A. HANDLE-SHAFT ASSEMBLY CONSISTS OF:  
HANDLE AND SLEEVE-DIE CAST ZINC,  
FINISH:  
-10 BUSHING- 303 STAINLESS STEEL, NATURAL  
-20 BRUSHED CHROME PLATE  
-30 CHEMICAL PROTECTIVE FILM  
-50 BLACK POWDER COATING

- SPRING AND WASHER- 303 STAINLESS STEEL, PASSIVATED  
O-RING- BUNA-N, BLACK  
JAM NUTS- 303 STAINLESS STEEL, NATURAL  
LOCKWASHERS- 303 STAINLESS STEEL, NATURAL  
SHAFT AND PIN- 303 STAINLESS STEEL, PASSIVATED OR BLACK ORGANIC COATING  
BUSHING- ALUMINUM, PASSIVATED OR BLACK ORGANIC COATING  
MTG. LOCKWASHER- SPRING STEEL, ZINC ALLOY PLATE, BRIGHT CHROMATE PLUS SEALER  
MOUNTING NUT- BRASS, ZINC PLATE, BRIGHT CHROMATE PLUS SEALER  
LOCKWASHER- SPRING STEEL  
JAM NUTS- LOW CARBON STEEL, ZINC ALLOY PLATE, BRIGHT CHROMATE PLUS SEALER  
ACTUATOR- 1010 STEEL, ZINC PLATE, CHROMATE PLUS SEALER  
GASKET- FIBRE, NATURAL

- B. THE ACTUATOR MAY BE OMITTED IF THE LATCH IS NOT TO BE USED AS A MULTI-POINT LATCH.



NOTE: OMIT THIS JAM NUT AND LOCKWASHER FOR MINIMUM (OR NEAR MINIMUM) APPLICATION FOR EACH GRIP RANGE.

