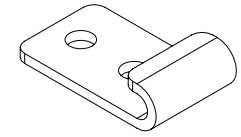
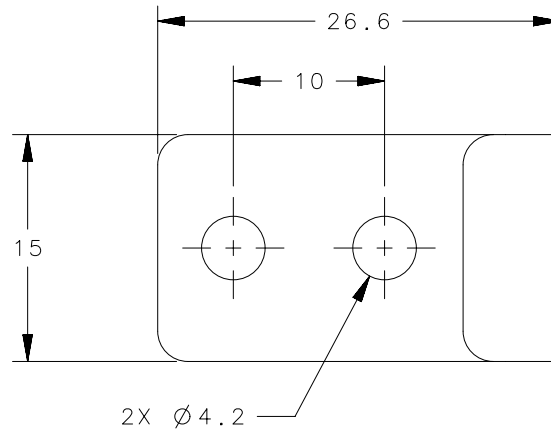
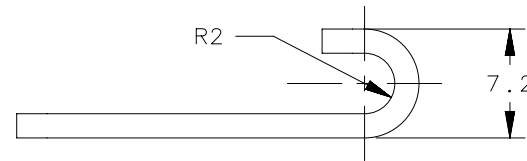


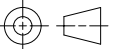

REVISION HISTORY			
REV	DATE	BY	DESCRIPTION
C	12MAR2019	DKP/DMS	PRN: P2019-0608



SCALE 1:1



TL-17-202-24	STRIKER	316 STAINLESS STEEL	ELECTROPOLISHED
TL-17-202-52	STRIKER	STAINLESS STEEL	PASSIVATED
TL-17-202-13	STRIKER	CARBON STEEL	ZINC & BLACK PASSIVATION
TL-17-202-10	STRIKER	CARBON STEEL	CHROME PLATE
TL-17-202-07	STRIKER	CARBON STEEL	ZINC & CLEAR PASSIVATION
PART NUMBER	TYPE OF COMPONENT	MATERIAL	FINISH

THIRD ANGLE PROJECTION 		 CONNECT • CREATE • INNOVATE	
MILLIMETERS [IN]			
TOLERANCES UNLESS OTHERWISE NOTED		DESCRIPTION STRIKER	
ALL DIMENSIONS WITHOUT TOLERANCES ARE FOR REFERENCE ONLY.		SIZE A4	SYSTEM NX
PROPRIETARY ITEM <small>EXCEPT FOR USES EXPRESSLY GRANTED IN WRITING, INFORMATION DISCLOSED HEREON IS CONFIDENTIAL AND ALL RIGHTS, PATENT AND OTHERWISE, ARE RESERVED BY SOUTHCO, INC.</small>		DWG NO. J-TL-17-202-XX	
PER ASME Y14.5M-1994		DRAWN BY MJW	DATE 02MAY2007
		SCALE 2:1	SHEET 1 OF 1