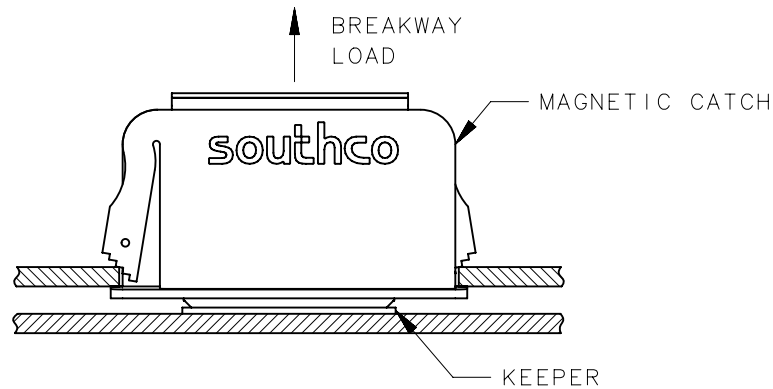


REVISION HISTORY			
REV	DATE	BY	DESCRIPTION
E	19FEB2015	DMS/YGC	PRN: P2015-0344

SOUTHCO PERFORMANCE GUIDELINES

THE PERFORMANCE GUIDELINES SHOWN ON THIS PAGE ARE SUPPLIED AS A GENERAL GUIDE ONLY, AS CONDITIONS VARY WITH EACH APPLICATION AND METHOD OF INSTALLATION. STRENGTH DATA GIVEN IS FOR FAILURE OF THE PRODUCT OR FOR SUFFICIENT DEFORMATION TO MAKE PRODUCT INOPERABLE. NO SAFETY FACTOR HAS BEEN APPLIED IT IS RECOMMENDED THAT THE USER REQUEST A PRODUCT SAMPLE FOR TESTING TO DETERMINE THE SUITABILITY OF THE PRODUCT FOR THE PURPOSE INTENDED AND USER'S PARTICULAR APPLICATION.

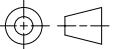
NO.02 MAGNETIC CATCH - 300 SERIES



NOTES:

1. THE FOLLOWING TEST DATA APPLIES TO THE 02-10-30X-X0 MAGNETIC CATCHES AND THE 02-14-302-11 KEEPER.  
 AVERAGE BREAKWAY LOAD - 8 N (1.8 LBS)  
 STANDARD DEVIATION OF DATA - 2.1 N (0.5 LBS)  
 ±3 STANDARD DEVIATION RANGE - 1.7 N (0.4 LBS) TO 14.3 N (3.2 LBS).
2. HOLDING FORCE OF THE MAGNETIC CATCH IS RELATED TO THE SURFACE OF THE KEEPER AND THE MATERIAL. THE OPTIMUM SURFACE FOR HOLDING POWER IS PLAIN STEEL, FLAT AND PERPENDICULAR TO THE POLE PIECES OF THE MAGNET. THE HOLDING FORCE OF THE ASSEMBLY (CATCH AND KEEPER) DECREASES FROM THE OPTIMUM WHEN:
  - A. THE KEEPER SURFACE IS PAINTED OR PLATED.  
THE THICKER FINISH CAUSES LESS HOLDING POWER.
  - B. ANY ANGULARITY OF THE LATCH TO THE KEEPER.
  - C. LACK OF FLATNESS EXISTS ON THE KEEPER SURFACE.

REFERENCE TEST REQUEST: tr-02-6599.

	THIRD ANGLE PROJECTION 	<b>southco</b> <sup>®</sup> CONNECT • CREATE • INNOVATE			
	MILLIMETERS [IN]				
SURFACE AREA	TOLERANCES UNLESS OTHERWISE NOTED	DESCRIPTION NO.02 MAGNETIC CATCH - 300 SERIES			
VOLUME	ALL DIMENSIONS WITHOUT TOLERANCES ARE FOR REFERENCE ONLY.	SIZE A4	SYSTEM NX	DWG NO. TD-02-3	
PROPRIETARY ITEM <small>EXCEPT FOR USES EXPRESSLY GRANTED IN WRITING, INFORMATION DISCLOSED HEREON IS CONFIDENTIAL AND ALL RIGHTS, PATENT AND OTHERWISE, ARE RESERVED BY SOUTHCO, INC.</small>	PER ASME Y14.5M-1994	DRAWN BY ESK	DATE 19OCT1972	SCALE 2:1	SHEET 1 OF 1