

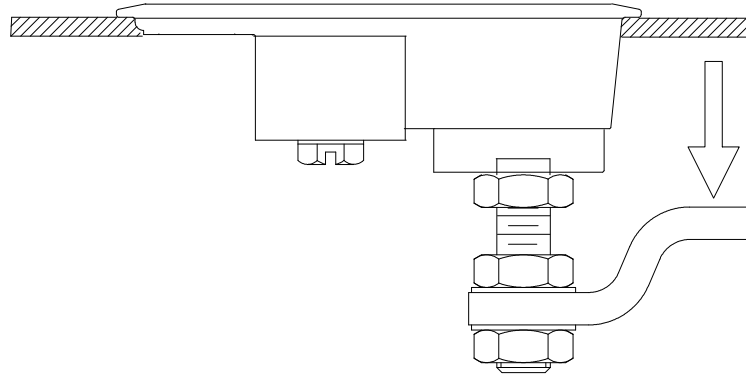
**southco**

PROPRIETARY ITEM - EXCEPT FOR USES EXPRESSLY GRANTED IN WRITING INFORMATION DISCLOSED HEREON IS CONFIDENTIAL AND ALL RIGHTS PATENT AND OTHERWISE ARE RESERVED BY SOUTHCO, INC.

No. 62 FASTENER - 700 SERIES

REV	DATE	DRAWN/CHKD	DESCRIPTION	DATE	DATE	PEK	CHKD	SCALE	DRAWING NUMBER	 THIRD ANGLE PROJECTION	 PAPER SIZE
B	09APR2002	GDM	UPDATE FORMAT	29AUG75				NTS	TD-62-7-J		

SOUTHCO PERFORMANCE GUIDELINES  
 THE PERFORMANCE GUIDELINES SHOWN ON THIS PAGE ARE SUPPLIED AS A GENERAL GUIDE ONLY. AS CONDITIONS VARY WITH EACH APPLICATION AND METHOD OF INSTALLATION, STRENGTH DATA GIVEN IS FOR FAILURE OF THE PRODUCT OR FOR SUFFICIENT DEFORMATION TO MAKE PRODUCT INOPERABLE. NO SAFETY FACTOR HAS BEEN APPLIED. IT IS RECOMMENDED THAT THE USER REQUEST A PRODUCT SAMPLE FOR TESTING TO DETERMINE THE SUITABILITY OF THE PRODUCT FOR THE PURPOSE INTENDED AND USER'S PARTICULAR APPLICATION.



No. 62 LIFT AND TURN LATCH - 700 SERIES

FASTENER YIELDED WHEN A LOAD OF 222 N (50 LBS) WAS APPLIED IN THE DIRECTION OF THE ARROW.