

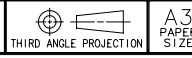
SOUTHCO PERFORMANCE GUIDELINES:
 THE PERFORMANCE GUIDELINES SHOWN ON THIS PAGE ARE SUPPLIED
 AS A GENERAL GUIDE ONLY. AS CONDITIONS VARY WITH EACH
 APPLICATION AND METHOD OF INSTALLATION, STRENGTH DATA
 GIVEN IS FOR FAILURE OF THE PRODUCT OR FOR SUFFICIENT
 DEFORMATION TO MAKE PRODUCT INOPERABLE. NO SAFETY FACTOR
 HAS BEEN APPLIED IT IS RECOMMENDED THAT THE USER REQUEST
 A PRODUCT SAMPLE FOR TESTING TO DETERMINE THE SUITABILITY
 OF THE PRODUCT FOR THE PURPOSE INTENDED AND USER'S PARTICULAR
 APPLICATION.

southco PROPRIETARY ITEM - EXCEPT FOR USES EXPRESSLY
 GRANTED IN WRITING INFORMATION DISCLOSED
 HEREON IS CONFIDENTIAL AND ALL RIGHTS PATENT
 AND OTHERWISE ARE RESERVED BY SOUTHCO, INC.

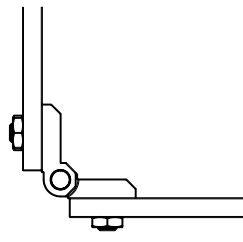
EH HINGE - 40mm X 40mm

DATE	DRAWN	CHKD	SCALE	DRAWING NUMBER
11JUN2005	AJH	TLK	.75:1	TD-EH-5A-J

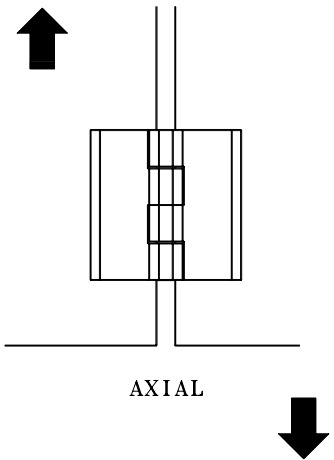
REV	DATE	DRAWN/CHKD	DESCRIPTION



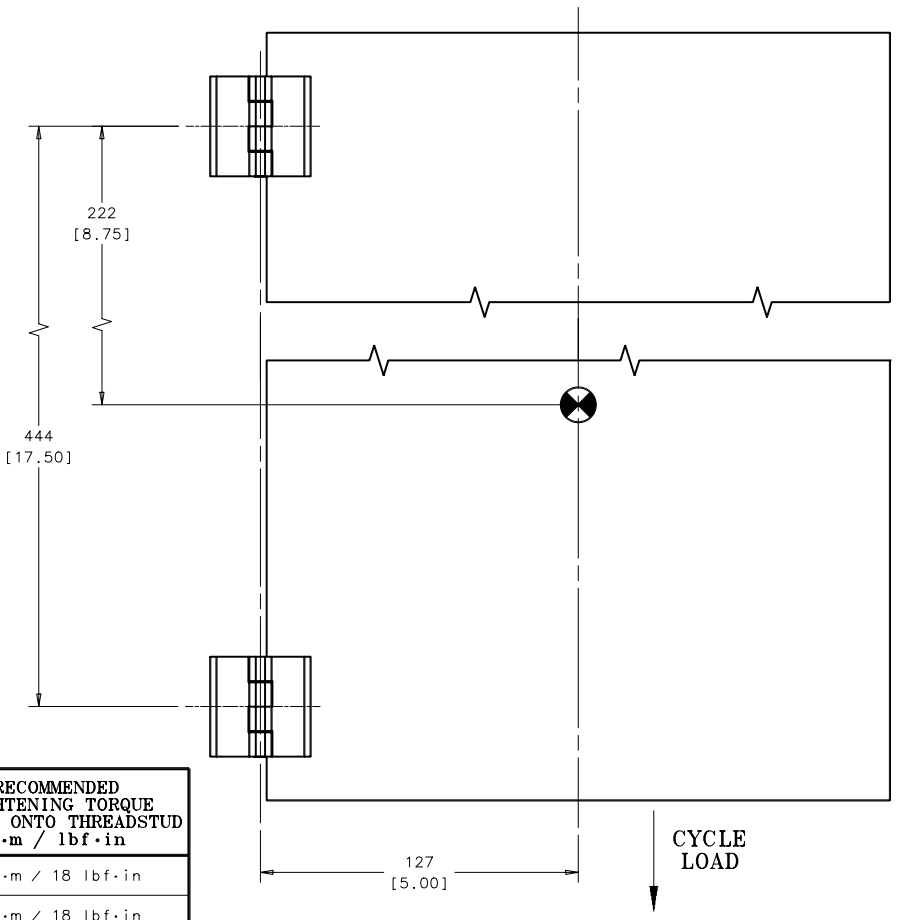
MILLIMETER/[INCH]



RADIAL
 (LEAVES PERPENDICULAR)



AXIAL



CYCLE TEST SET-UP
 (SCALE .5:1)

NOTES:
 A. CYCLE TEST: TWO HINGES WERE MOUNTED ON A 20lb. CABINET DOOR.
 SAMPLES WERE ROTATED (cycled) 180°.
 PRODUCT PASSED 5000 CYCLES WITH NO LOSS OF FUNCTION.

PART NUMBER	CYCLE LIFE ® 89 N / 20 lbf	MAX STATIC WORKING RADIAL LOAD ® 90° N / lbf	MAX STATIC WORKING AXIAL LOAD N / lbf	RECOMMENDED TIGHTENING TORQUE OF NUT ONTO THREADSTUD N·m / lbf·in
EH-5A-4G4-38	5,000 CYCLES	1334 N / 300 lbf	2224 N / 500 lbf	2 N·m / 18 lbf·in
EH-5A-4G4-50				2 N·m / 18 lbf·in
EH-5A-4V4-38				-
EH-5A-4V4-50				-