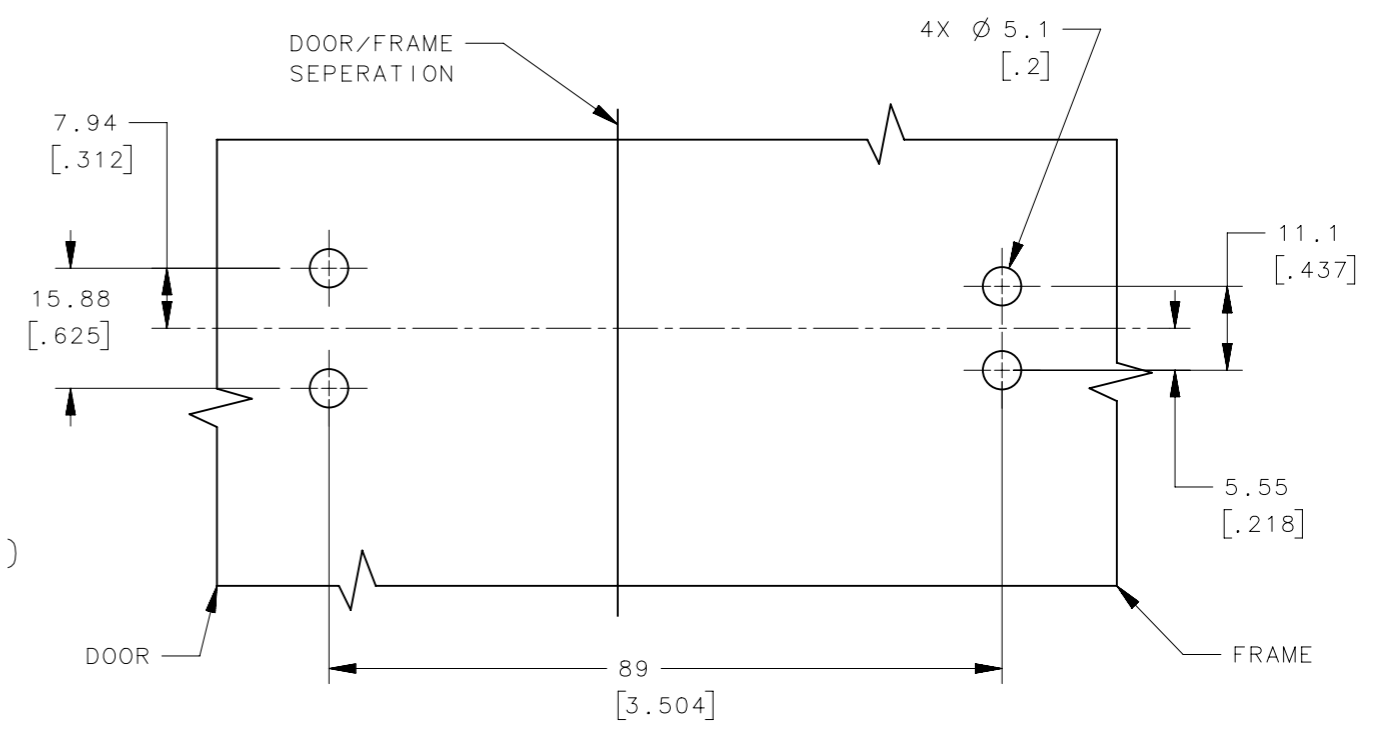
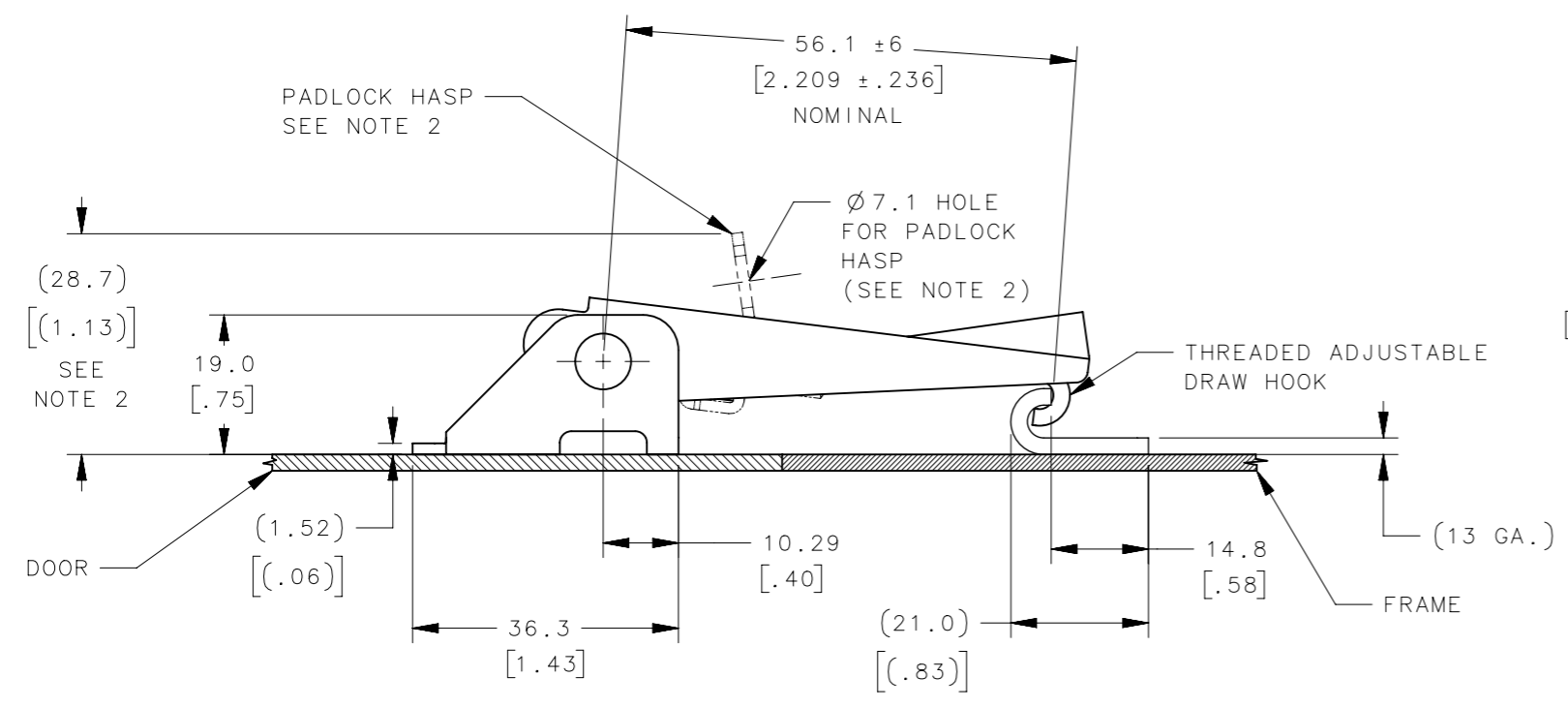
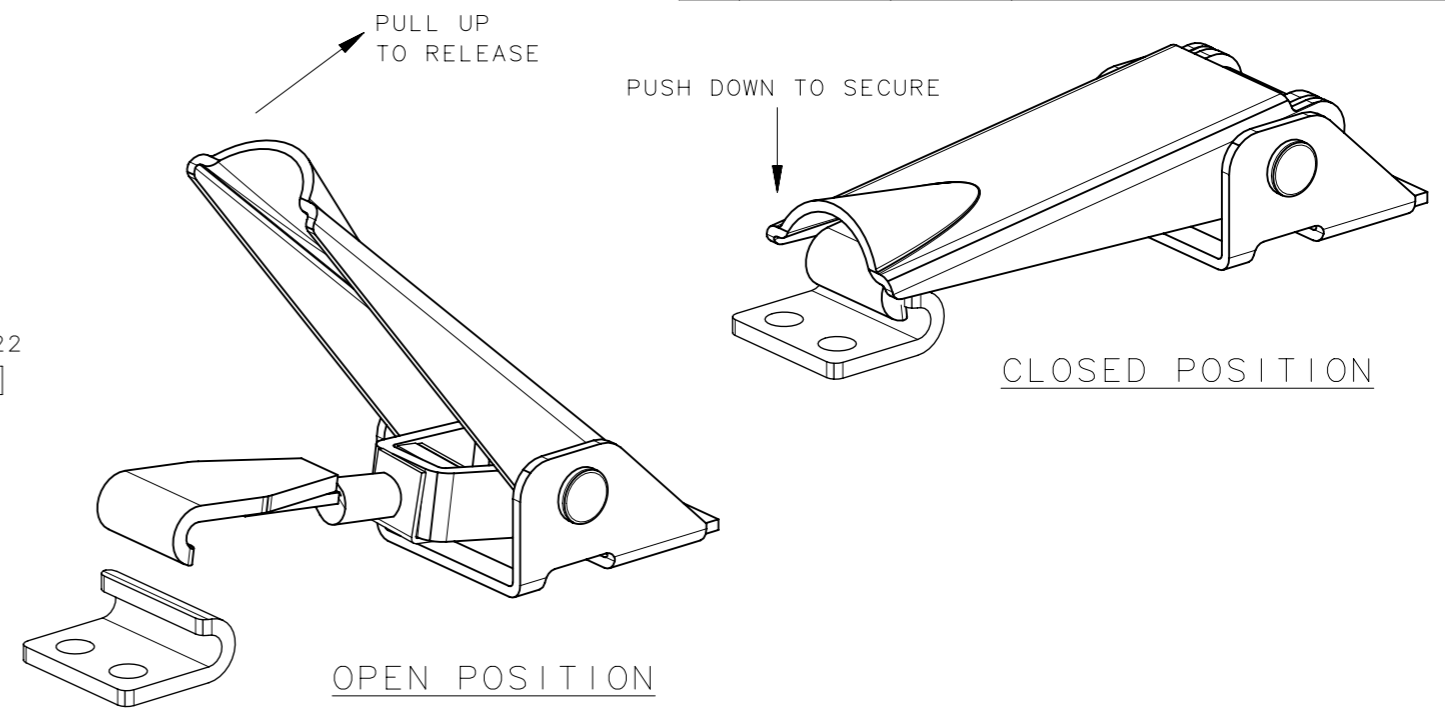
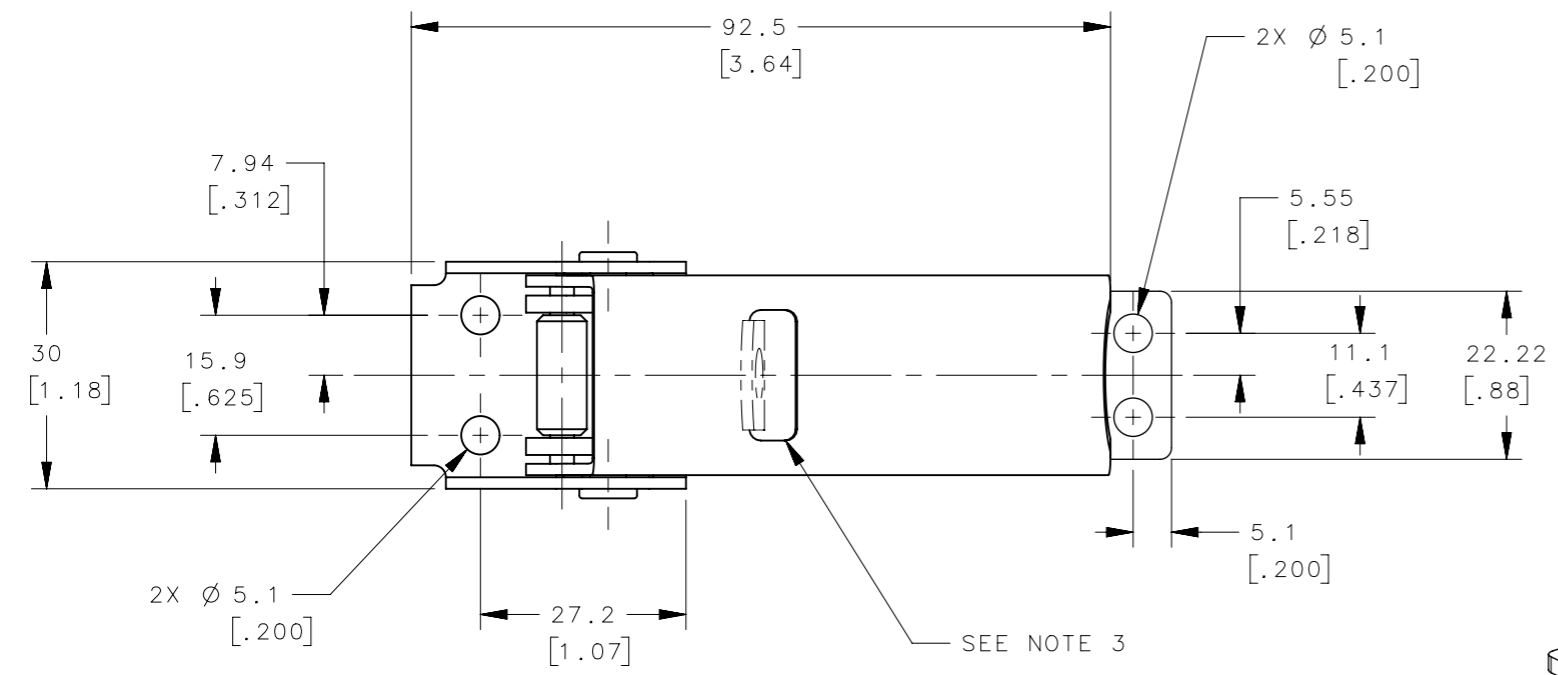


REVISION HISTORY			
REV	DATE	BY	DESCRIPTION
A	19AUG2014	JAJ/YGC	PRN: P2014-1644



- NOTES:
- TAKE-UP IS 9.65 [.38] MINIMUM.
 - SLOT THROUGH HANDLE AND HASP ON 91-772-XX ONLY. HASP WILL TAKE UP TO 1/4" DIAMETER SHACKLE.
 - PART NUMBER 91-752-XX SHOWN.

91-772-52	LATCH ASSEMBLY WITH HASP	300 SERIES CRES	PASSIVATED	
91-772-07	LATCH ASSEMBLY WITH HASP	CRS	ZINC PLATED	
91-752-52	LATCH ASSEMBLY	300 SERIES CRES	PASSIVATED	
91-752-07	LATCH ASSEMBLY	CRS	ZINC PLATED	
PART NUMBER	TYPE OF COMPONENT	MATERIAL	FINISH	GENERAL NOTES

THIRD ANGLE PROJECTION				southco [®] CONNECT • CREATE • INNOVATE	
MILLIMETERS [IN]		SIZE A3	SYSTEM NX	DWG NO. J-91-7	
TOLERANCES UNLESS OTHERWISE NOTED		PER ASME Y14.5M-1994	DRAWN BY JAJ/YGC	DATE 19AUG2014	SCALE 1:1
ALL DIMENSIONS WITHOUT TOLERANCES ARE FOR REFERENCE ONLY.		SHEET 1 OF 1			

PROPRIETARY ITEM
EXCEPT FOR USES EXPRESSLY GRANTED IN WRITING, INFORMATION DISCLOSED HEREON IS CONFIDENTIAL AND ALL RIGHTS, PATENT AND OTHERWISE, ARE RESERVED BY SOUTHCO, INC.