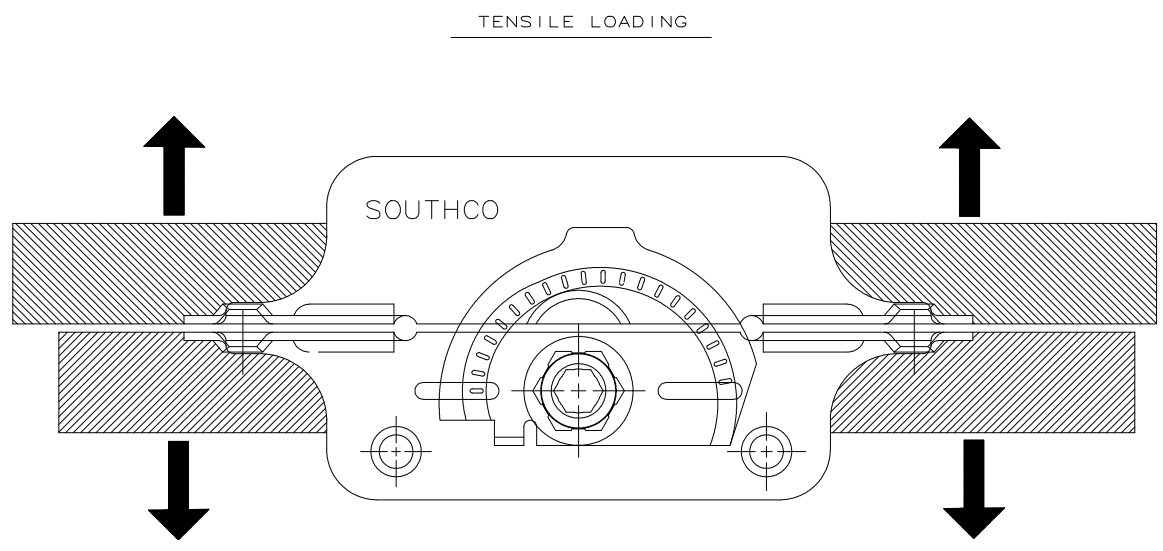


REV	B	DATE	09APR2002
DRAWN/CHKD	GDM	DESCRIPTION	UPDATE FORMAT

DRAWN	CHKD	SCALE	NTS
ALC	ACZ		

THIRD ANGLE PROJECTION	PAPER SIZE
	A

SOUTHCO PERFORMANCE GUIDELINES  
 THE PERFORMANCE GUIDELINES SHOWN ON THIS PAGE ARE SUPPLIED AS A GENERAL GUIDE ONLY, AS CONDITIONS VARY WITH EACH APPLICATION AND METHOD OF INSTALLATION. STRENGTH DATA GIVEN IS FOR FAILURE OF THE PRODUCT OR FOR SUFFICIENT DEFORMATION TO MAKE PRODUCT INOPERABLE. NO SAFETY FACTOR HAS BEEN APPLIED IT IS RECOMMENDED THAT THE USER REQUEST A PRODUCT SAMPLE FOR TESTING TO DETERMINE THE SUITABILITY OF THE PRODUCT FOR THE PURPOSE INTENDED AND USER'S PARTICULAR APPLICATION.



ITEM	PART NUMBER	MAXIMUM RECOMMENDED TENSILE WORKING LOAD	AVERAGE ULTIMATE TENSILE LOAD
FRONT-MOUNT ROTO LOCK	RECEPTACLE: 2-67-0268-02 LATCH: 2-67-0267-02	2440 N (550 LBS)	4000 N (900 LBS)

- ① WORKING LOAD is the maximum force that the product will withstand without affecting the operation or appearance of the product.
- ② Average ULTIMATE LOAD causes failure of the product or sufficient deformation to make the product inoperable.